

*THE BOOK OF THE
TRIUMPH OF SPIRIT*

MIKE SOSTERIC

Version 1.11

Contents

Dedication	iii
Preface.....	3
Archetypes	6
Origin	9
Purpose	12
Creation Templates.....	14
How to Reprogram the Planet.....	16
Warning, Challenge Ahead.....	17
Archetypal Study.....	18
Walk Through	19
Additional Keys to Progress	23
Navigating reConnection.....	26
You are in control.....	27
Help is standing by.....	28
Stay positive.....	28
Take care of yourself.....	28
Cleansing and Connecting.....	29
Joyful (formerly The Fool).....	30
The Master (formerly Magician).....	34
Formation (formerly High Priestess).....	38
Rebirth (formerly Empress).....	42
Force (formerly Emperor).....	46
Realization (formerly Hierophant).....	50
Activation (formerly The Lovers).....	54
Victory (formerly Chariot).....	58
Strength.....	62
Lightworker (formerly the Hermit)	66
World (formerly The Wheel)	70
Alignment (prev. Justice).....	74
Sacrifice (prev. Hanged Man)	78
Initiation (prev. Death)	82
Passage (prev. Temperance)	86
Emancipation (prev. Devil)	90
Power (prev. The Tower)	94
The Star.....	98
Connection (prev. The Moon)	102
The Promise (prev. The Sun).....	106
The Calling (prev. Judgment)	110
Graduation/Ascension (prev. The World).....	114

As above in consciousness,
So below in matter

Mike Sosteric



Breaking the chains that bind

Preface

Greetings and welcome. The book that you have in your hand is part of the **Triumph of Spirit Archetype System (TOSAS)**. The TOSAS provides a complete **new energy**¹ archetypal system designed to help with **Flow Control**² and the establishment individual and collective **right thought**.³ The TOSAS does this by helping you replace the **old energy** archetypes that undermine your health and connection, and that are now destroying the planet, with powerful **new energy archetypes**⁴ capable, given **right environment** and **right action**, of emancipating the people and connecting them with higher Consciousness.

This TOSAS is part of the Lightning Path (LP) system of human development. The LP is designed to help you **heal** and **connect** so you can realize your full human potential. If you are new to the Lightning Path, you may have difficulty with some of the concepts in this book. To start at the beginning, visit <https://patreon.com/LightningPath>.

Note, this book is a advanced, spiritual/mystical discussion of Triumph of Spirit archetype System and its relation ship to old energy archetypes. It is not intended to stand alone. For a list of additional readings and resourcers that you

can use to advance your understanding of not only the TOSAS, but of archetypes, narratives, master narratives, and creation templates, visit <http://spiritwiki.lightningpath.org/index.php/TOSAS>

1 https://spiritwiki.lightningpath.org/New_Energy

2 https://spiritwiki.lightningpath.org/Flow_Control

3 Right thought is thought that supports spiritual awakening and spiritual connection. https://spiritwiki.lightningpath.org/Right_Thought.

4 https://spiritwiki.lightningpath.org/New_Energy_Archetypes.



The Call to Awaken

Archetypes and Creation Templates

Greetings and welcome. The book that you have in your hand is a book of ideas. More specifically, it is a book of archetypes. What is an archetype? As noted in the **SpiritWiki**,¹ an archetype is basically any conscious or unconscious idea that provides you with an answer to a **Big Question**.² Big questions are the ultimate questions of existence and cosmology. Big questions are spiritual questions of existence, purpose, place, and so on. Examples of big questions include, “Why am I here?”, “What is my purpose?”, and “What is the nature of God?”

You will understand the idea of an archetype perfectly if you consider a simple example. Almost everybody on this planet accepts the archetype of good versus evil. That is, on this planet, just about everybody believes that some mystical force for good (sometimes literally called “the force”) and some magical power for evil (sometimes personified as Satan/Darth Vader, or other “dark” figures) exists in creation. Most people on this planet, many atheists too, still believe that these mystical and magical forces fight each other in an eternal comic book battle.

This notion that the universe is composed of dark/evil versus good/light forces is an archetype. It is an archetype because this idea of good versus evil provides an answer to a big question. The big

¹The Spiritwiki is the canonical on line glossary of LP terms, concepts, and theory. Visit the SpiritWiki at <https://spiritwiki.lightningpath.org/>.

² See http://spiritwiki.lightningpath.org/Big_Questions/

question it answers is, “Why are we here?” The archetypal answer it provides is, to fight evil and be good.³

As you can see, the collectively accepted notion that the universe is a universe of good and evil, light and dark, yin and yang, locked in some cosmic struggle, is an archetype, and a very big one. In fact, this archetype of good and evil is reflected in one way or another in all of our thinking. And that goes whether you are a “new ager” browsing the local bookstore or a scientist hived off in a hallowed hall somewhere. The archetype is obvious in religious thinking where it is often personified as a fight between a good god and an evil force. It is in psychology and even sociology. Freud’s evil little id, Jung’s negative shadow, and Hegel’s dialectic are all examples of this belief that the universe is a universe of good and evil. It is even in secular popular culture. George Lucas’s light and dark forces reflect the same good versus evil archetype, just framed in different ways.

As you can see, *an archetype is a big idea that provides an answer to a big question*. But archetypes are more than just big ideas. Archetypes are also about thought control. That might sound a bit unreasonable, even conspiratorial and paranoid to some, but it is not meant to be. It is just the way

³ If you are interested in the origins of the good/evil archetype, and many more, see Sosteric, M. (2017). From Zoroaster to Star Wars, Jesus to Marx: The Science and Technology of Mass Human Behaviour. [Available at <https://www.academia.edu/34504691>].

it is. *When we look at the world (and ourselves), we always invoke archetypes to understand.* For example, when we see oppression and violence around us we invoke the good versus evil archetype to understand why. School shootings? Taliban oppression? American Imperialism? Monsanto greed? The fall of New York's twin towers? When we think about these things, we understand them to be outcomes of a cosmic/comic battle between whatever version of light versus dark we have adopted. When we ask questions like "Why do bad things happen?" or "Why do people do bad things?" or "Why is there so much pain and suffering in the world?" the answer is inevitably provided by the archetypes we have absorbed.

When we accept the answers provided by archetypes, the archetypes guide how we think. We can say, *how we understand the world depends on the archetypes we use to see it.* If we accept this basic and logical premise, we can see, archetypes are about thought control. Archetypes control how we think about the world by shaping the way we see things, and the excuses and justifications we provide.

If it makes you feel less conspiratorial, instead of saying "archetypes control our thoughts," we may say that *archetypes organize our thinking about the world.* Whichever you choose, it is the same. Your thinking about the world is governed by the archetypes you have in your brain.

To summarize what I have said so far, archetypes

1. Provide big answers to the big questions that we all have and in so doing,

2. Help us organize our thinking about the world.

I have to say, at this point, the fact that archetypes answer our big questions and organize our thinking is a very big deal, and it is important you wrap your head around the idea. However, this is not all of it. In addition to giving us answers and controlling our thinking, *archetypes also, through our actions, influence how we create the world, and help create the world we live in.*

Now, I understand that to some this might sound mystical, magical, and ungrounded, and it can be. We can certainly see the above as statements of mysticism and magic. Personally, I have issue with neither mysticism nor magic, but if that kind of thing makes you uncomfortable, you can understand the process whereby archetypes help us create the world in purely materialist terms. In this regard, it all comes down to the centrality of human thought, and how thought determines our actions in this world.

What do I mean by this? Consider this. The world around you, the device in front of your face, the clothes on your back, the chair that you sit in, the house you live in, the building you work in, even the institutions (family, education, courts) that organize and control our life were built by human hands. Take humans out of the picture and none of our devices, structures, and institutions would remain. Without human creation and ongoing human maintenance, Church, state, science, education, even the buildings we live in would crumble into dust. Blame God or Satan all you want. Cite divine providence or karmic churning if you like; but the reality is, we create the world we live in with our human hands. Without human hands, there is no human world, period.

The Lightning Path

As much as it is important to be clear that the human world is built exclusively by human hands, it is even more important to understand that *we humans create the world we live in according to the ideas/archetypes that we have in our head.* Nothing gets created but that an idea or archetype has come along first. If you build a table, you have an idea of that table first. If you build a house, you have an idea of that house first. If you build an institution, like for example the Christian Church, you have archetypes (like good versus evil) and ideas about human spirituality first. Without these ideas and archetypes, nothing on this world would get built.

To summarize what I have said so far, archetypes

1. Provide big answers to the big questions and in so doing,
2. Help us organize our thinking about the world and, through the actions of our daily existence,
3. Influence, even determine, how we create the world around us.

In addition to the fact that archetypes provide answers to big questions and in so doing help a) organize our thinking and b) influence/determine our action, the archetypes we have in our head also determine how we see ourselves, who we make ourselves up to be, and consequently what we are able to accomplish in the world. They do this for the same reasons, and in the same way, they help us create the world at large. They do it because they shape our ideas, which in turn shapes our thinking, which in turn shapes how we see ourselves and the action we are likely to take.

We can see all this clearly when we consider what I call the "**Fool in School**" archetype. Those familiar with the Western Tarot, those steeped in New Age "teachings," and those who come from religion and secular type backgrounds, in other words all people, will be familiar with this archetype. The Fool in School archetype, like all archetypes, answers a big question or two (or three). In this case, the questions are "who am I?" and "why am I here?" When we ask the question "who am I" the answer provided by this archetype is that you are a foolish soul. When we ask the question "Why am I here?", the answer provided is that you are a fool in school here to "learn lessons" or "pay off karmic debt" or something like that. We are "fools in a cosmic school" here to learn lessons and pay off debt.

You can see this "fool in school" archetype represented bright as the noonday sun in the "modern" Western tarot deck, and in particular the Fool card. In the tarot deck, in that card, we clearly see the "cosmic fool" stepping off the cliffs on his way to his Earthly school. To tell the full story, this fool is jumping into a body (a "**chariot**", another tarot card) and his body is going to carry him through a lifetime of divine or evolutionary lessons where he will, if he's lucky, pass **judgment** (another old energy archetype) and graduate onto the next **universal level**. He is a "fool in school" and according to this pervasive "fool in school" archetype, so are you.

Of course, this fool in school archetype finds expression not only in the tarot. You find this idea in Western theology (you are ejected from the Garden and you have to win your way back in), Eastern theology (in order to reach Nirvana you have to learn lessons and clear any karmic debt you



accumulate), and science (you're an evolving ape moving towards higher levels of consciousness). You also find it peppered everywhere in the art and culture of this society. You find it in movies, music, television, literature, news, and everywhere. This idea is so pervasive because that's what we are taught as children, we believe it, and so we reproduce it in our art and work. I know I was taught it as a child. I spent enough time in Catholic Church to absorb the fool in school archetype. Even later, when I rejected Catholicism, I found it again in New Age doctrine. When I rejected that, I found it in university where I was taught that the "worthy and strong" are the ones who have taken the Fool's journey and pass nature's tests. The Fool in School archetype truly is everywhere.

If you adopt the fool in school archetype, then large portions of your life will be governed by this archetype. It will, in other words, control

the way you think about yourself and how you act in the world. If you adopt this archetype, your view of self will be such that you spend your life pursuing "life lessons" and seeing everything that happens to you in some divine, pedagogical light. What is more, this archetype will determine your actions, or lack thereof. If something bad happens to you, like for example if a corporation dumps toxic waste in your water supply and your entire family dies of cancer, you will be less likely to sue the corporation for the cause of the cancer and more likely to look for the "life lesson" in the thing. This is a major impact. If you look for the life lesson, the corporation that poisons your family gets off free. In other words, by adopting the Fool in School archetype, we create a world safe for corporations, but dangerous to human beings.

To summarize what I have said so far about archetypes, archetypes

1. Provide big answers to the big questions. Through these answers, archetypes...
2. Help us organize our thinking about the world.
3. Guide us as we shape the world around us and
4. Shape our lives, our self-image, and the actions we are likely (or unlikely) to take in the world.

Creation Templates

If it is true what I say that archetypes organize our thinking, influence our actions, and shape our lives and self image, then archetypes are incredibly powerful. In fact, that is true. The archetypes we

The Lightning Path

absorb in our brain have an incredible influence on us. This is no doubt the reason why, as discussed in the articles "From Zoroaster to Star Wars, Jesus to Marx" and "A Short Sociology of Archetypes,"⁴ elites put a lot of effort to constructing systems of archetypes.

When you think about it, the influence that archetypes have on us is striking even now, but it is more striking when we consider the fact that it is not just one or two archetypes that we have floating around in our brain, it is many. As a part of the socialization process we all endure, we all absorb many different archetypes, like the **Fool in School Archetype**, or the **Good versus Evil** archetype, and so on. As explained in the articles mentioned above, these archetypes are not random. They are designed by people, in some cases ancient high priests, in others elites in secret societies like the Freremasons, to work together to achieve a particular creative goal. I call a collection of designed archetypes intended to achieve a certain creative goal a **Creation Template**.⁵ A creation template is a collection of meaningfully related archetypes designed to work together and brought together into a collection, like a book, or a record album, or a deck of **Archetype Cards**.

A classic example of a creation template is the "modern" western tarot deck is a deck of seventy-eight archetype cards which were designed and put together for the specific purpose of a) enabling the growth and spread of Capitalism, and b) justifying and excusing the wealth, privilege,
⁴ See Sosteric, M. (2017). From Zoroaster to Star Wars, Jesus to Marx: The Science and Technology of Mass Human Behaviour. [Available at <https://www.academia.edu/34504691>] and also Sosteric, Mike. "A Short Sociology of Archetypes," Unpublished. <https://www.academia.edu/44254363/>.
⁵ https://spiritwiki.lightningpath.org/Creation_Template.

and social class inequalities that inevitably attend this system.⁶ When you put old energy archetypes together into a creation template for the purpose of enslaving people in a Capitalist system, you get an **Old Energy Creation Template**.

Another example of a creation template is the Triumph of Spirit Archetype System, designed by myself. The TOSAS, as you know, is a collection of twenty-two new energy archetypes designed to a) replace and over write the old energy archetype system and b) facilitate healing and reconnection. When you put new energy archetypes together for the purpose of emancipation and empowerment, you get a **New Energy Creation Template**.



If this sounds all very strange and conspiratorial, have a look at the Golden Dawn Wheel of Fortune Tarot card from the old energy Golden Dawn tarot deck, and tell me if this image does not fit exactly the story so far. This "tarot" card, this

⁶For a discussion of the Freemason's Old Energy Creation template, see Sosteric, Mike. "A Sociology of Tarot." Canadian Journal of Sociology 39, no. 3 (2014). <https://www.academia.edu/25055505/>.

archetype card as we will refer to these from this point forward, represents a rather ugly picture of a two class system between elites on top and some kind of unworthy ape-being below. This system, we call it The System, The archetypal message and intent of the old energy creation template could not be more clear.

To summarize what we have learned so far, archetypes

1. Provide big answers to the big questions. Through these answers, archetypes...
2. Help us organize our thinking about the world.
3. Guide us as we shape the world around us and
4. Shape our lives and our own self-image.
5. Are organized into Creation Templates for the purpose of achieving certain creative goals.

In the rest of this book, we are going to look at the new energy creation template of the TOSAS and the old energy creation template as provided by the Freemason's tarot. The goal in this book will be to dive deep into the messages of the old energy archetype system in an effort to make the old energy messages as clear as possible, and also to make the new energy messages of the TOSAS as clear as possible, so you can break the hold old energy archetypes have on you and replace them with the emancipatory images and messages of the new energy TOSAS. Before we get to that, however, a few final things need to be said.

First of all, be clear, you do not have to be a member of the Zoroastrian faith, a Freemason,

or an aficionado of tarot cards to have absorbed old energy archetypes. As noted in the article "From Zoroaster to Star Wars," and as Mary Boyce points out,⁷ the ancient old energy archetypes have penetrated into all our religious and atheist belief systems, and we've all been programmed with them to one degree or another. Note, this also includes otherwise "progressive" spiritualities, like New Age spiritualities, which, as you'll realize once you see all the old energy archetypes, also incorporate old energy archetypes like judgment, foolish tutelage, and so on.

Second of all, as Machiavellian as this discussion of elite manipulation of archetypes might read to some people, I would argue, creation templates are necessary for advancing civilization. Creation templates provide a "master story" as Ellens put it, or a creation template as I say, that allows society to energize, organize, and "aim" themselves in a specific direction. Without the energizing and organizing functions of a creation template, civilizations would not evolve. Without the energizing and organizing functions of a creation template, civilization would stagnate. To be clear, *creation templates create the unity of thought and purpose required to move civilizations forward.*

Third, understand the construction and use of creation templates for the purpose of aiming and evolving human civilization is neither a good thing nor an evil thing, it is simply a thing. Whether it is good or bad depends entirely on the nature of the creation template, who develops it, and the uses to which it is put. A creation template can be good if it encourages good things, like unity, collective purpose, compassion, etc. On the other hand, a

7 Boyce, M. (2001). *Zoroastrians: Their Religious Beliefs and Practices*: Routledge.

The Lightning Path

creation template can be bad if it encourages bad things, like the enrichment of a few, war, division, hatred, violence, inequality, and so on.⁸

Four, and most important, because humans have created creation templates, humans can change them as well. Despite the lies the priests and "masters" might tell you about the sacred nature of archetypes, bibles, and so on, humans created the original old energy creation template, therefore, they can also change the template and replace it with something new. Humans can use their imagination to rewrite creation templates.

The question at this point becomes, "**why would we change a creation template?**" The answer to that is simple and obvious. We change a creation template because we need to. We change a creation template when it no longer works or when it becomes, for whatever reason, counterproductive, toxic and destructive. I would argue this is the point we are at now. While it could be argued that the old energy creation template which first emerged in the ancient city-states of the Fertile Crescent has encouraged the evolution of human military, industrial, political, social, and technological capacity, and while it has certainly been beneficial for privileged sections of the Earth's population, at this point, conditions have changed. This planet's, what we might call, **Pinnacle Species**⁹

⁸ On the topic of ethics, the current old energy template, the Zoroastrian/Masonic Creation Template as we might like to call it, is a mixed bag. In as much as this template has allowed elites to "lead" the masses and advance this planet's civilizations, it has had positive benefit. On the other hand, in as much as the Zoroastrian old energy template has encouraged obscene imbalances of wealth and power, in as much as a lot of people have suffered and died under the manipulative, colonial, yoke of the old energy creation template, and as much as the planet is now on a clear path of ecological destruction caused by a careening and out of control Capitalist System, it is bad.

⁹ A Pinnacle Species is a planet's "top" species. A pinnacle species is the species with a physical apparatus

has advanced sufficiently and no longer needs the driving energy created by old the energy templates. In fact, at this point, the old energy template has become an absolute liability. Without going into a lot of ugly detail about why that is, let me just say this: when the political, economic, technological, military, and scientific prowess of a species dramatically outpaces and outmatches its mental health and ability to connect, disaster inevitably results. Put another way, it is one thing to put a big stick in the hands of a caveman who thinks with concepts like "good" and "evil," it is quite another to put nuclear arsenals, advanced communication tools, and quantum powers into those hands. You just have to look at the 2016 U.S. election and the global manipulation of the masses to see the jeopardy "old energy" thinking is placing us in.

To be clear, organizing our collective thinking with old energy archetypes like good versus evil, judgment, punishment, and so on, and battling each other with sticks, stones, and the occasional chariot rider, is not likely to lead to global Armageddon and the destruction of a species. However, at the point where the species "breaks free" of its primitive limitations and begins to develop advanced industrial and communication technologies, artificial intelligence, and quantum technologies, the old energy thinking and old energy world created by old energy archetypes becomes a liability. At a certain point, a pinnacle species either replaces the old energy archetypes which drove its cultural, economic, and technological advance with **New Energy Archetypes** that heal, unify, and connect,

capable of managing a planet for maximum, sustainable, life. Although they are currently failing miserably to manage this planet sustainably and for maximum life, humans are this planet's pinnacle species. See https://spiritwiki.lightningpath.org/Pinnacle_Species.

or an inevitable "end of epoch" **debacle**¹⁰ sets that species back or destroys it altogether.

I would argue that this is the point we are at now. If the current old energy creation template stays in place, it will mean the end of the human species, or at least a dramatic setback. The human race *in toto* probably will not go extinct, but billions will suffer and die, and it will take centuries to fully recover.

How to Reprogram Your Self and the Planet

At this point, hopefully you can see the problem. The human species has advanced as far as it can under the energies and actions created by the old energy creation template. If we, and by "we" I mean the human species, want to survive, better yet, if we want to transit to the next **evolutionary stage**,¹¹ we need to swap out the old creation template and the archetypes upon which it is based, and replace it with something new, something that unifies, calms, and connects, rather than divides, incites, and separates. That new thing is, of course, the Triumph of Spirit Archetype System. The Triumph of Spirit Archetype System (TOSAS) is a new energy archetype system. It is an archetype system designed specifically to replace old energy archetypes that encourage division, hierarchy, privilege, and exclusion, with new energy archetypes that unify, heal, and connect.

You can use the TOSAS to reprogram yourself and, if you are an **Agent of Consciousness** (a priest, an artist, a teacher, etc.),¹² you can use it to

10 <https://spiritwiki.lightningpath.org/Debacle>

11 [https://spiritwiki.lightningpath.org/Evolutionary_](https://spiritwiki.lightningpath.org/Evolutionary_Stages)

Stages

12 An agent of consciousness is is an Agent of Social-



write sacred stories and help reprogram others.

This process of reprogramming we might refer to as **Archetypal Revision**, **Archetypal Cleansing**, or even **Archetypal Sanitation**. You can also look at it as "**implant removal**" in as much as we are removing the archetypal implants of elite Agents of Consciousness. However you prefer to look at it is fine. The rest of this book is devoted to an expose of the old energy system of hierarchy, privilege and control, and an elaboration of this new energy archetype system.

ization whose specific purpose is to insert ideas and Archetypes into the individual and Collective Consciousness of this planet. xxx ADORNO
For more, see https://spiritwiki.lightningpath.org/Agents_of_Consciousness.

Warning, Challenge Ahead

Before taking you any further into this archetypal study, I would like to issue a bit of a warning and that warning is this, if you want to do more than just gloss over these archetypes, if you want to successfully replace the dated and toxic old energy archetypes with the (I would argue) transformative new energy archetypes of the TOSAS, it will take patience and extended practice. You are not going to be able to just read through the introduction, skim the TOSAS books, and be done with it. If you are serious about learning new energy archetypes and replacing old energy archetypes, there is intellectual, emotional, and psychological work and challenge ahead. You need to meet this challenge head-on.

For example, you may find that examining these archetypes goes to the very root of your ideas about your identity, gender, social class, divine purpose, spiritual beliefs, etc. Indeed, you may find that the old energy archetypes presented here are defining constructs, concepts that embed you in an entire social, political, and (possibly privileged) economic fabric that you are not anxious to give up. As such, your first instinct may be to protect your established belief systems and resist the new energy archetypes. Getting over this resistance is one of the main challenges you will face at the start of your archetypal journey home.

If you do find yourself resisting at some point, remember the next few words. *Trust in yourself and trust that you have control.* You will find that the new energy archetypes presented in the TOSAS will challenge and change your self-image, the way you think about yourself and this world, your understanding of creation, and your approach

to the life. However, the archetypes will do this only if you allow them to. In other words, you have a choice.

This is important. Understanding that you have control over how you think about things and whether or not you want to use the new energy archetypes to shift your thinking, your actions, and your creative efforts will go a long way towards alleviating any anger, anxiety, or stress you may feel as you go through these materials. If you do not like what you are reading, that is fine. Put aside the materials and come back when you like. Nobody is forcing you to move in this direction. The final choice is always up to you.

However, keep in mind, choices have consequences. If you eat nothing but processed foods, you will eventually get sick. If you think and act with nothing but old energy archetypes, you will eventually grow brittle and die. If you want to save your self and this planet, you are going to have to change your old energy archetypes and replace them with new energy ideas, because the new energy archetypes aim us in a different direction. A new world will not emerge and this planet will not graduate until the archetypal foundations provided by the old energy creation template are finally and forever dismissed.

With that said, let us take a closer look at the TOSAS.

The TOSAS

As you already know, For your information, the TOSAS consists of a deck of twenty-two archetype cards and associated books and resources that explain the TOSAS archetypes in various depth

and detail. In order to get the most out of the TOSAS resources, you should have access to a print copy of the deck. Alternatively, you can browse the archetypal images at <https://www.michaelsharp.org/TOSAS>.

Getting Started

If you do have a deck of the cards in hand, the next question is, how to use the cards and this book to begin archetypal revision? You start by learning the individual archetypes. There are two ways to approach this learning process. You can either pick a random card or study the archetypes in the order presented by reading this book front to back.

If you want to **pick a random card**, there are basically two ways to do so. The easiest way is just shuffle, cut, pick up a random card, and read the associated content. If you pick the Joyful card, go to the Joyful entry and read that.

The other way to approach your archetypal study is in a more direct and linear fashion. In this second approach, you read this book from start to finish, pausing to analyze and consider along the way. Then, if necessary, read the book(s) again. Continue reading the books from front to back until you are sure you have extracted all the information you need.

If you do take a linear approach, do not skim too quickly through. Stay with one archetype for a period of time until you are comfortable you have absorbed the meaning and the message. If you skim too quickly through the cards, you will not absorb the deeper meaning and significance of the archetype or the system.

Note, neither the intuitive nor the linear approach is the "right" way. Either is just an

option, although if you are serious about archetypal revision, I recommend you use *both* methods in whatever combination you intuitively feel is comfortable. Start by traversing the materials in an intuitive fashion if you like, but when you are comfortable, begin a linear approach. If you do not have a lot of time but still want to move forward, pick individual cards. If you feel motivated to engage in deeper study by reading through the materials front to back, do that. Just set your intent to move forward. Say something like, "I wish to move forward," and follow your gut. Unless you are dealing with deep psychological or emotional toxicity, in which case your first step should be healing that toxicity,¹³ your best path forward is to always follow your gut.

Walk Through

Now that you know how to pick and study a card, I would like to walk you through the study process. To start, pick the first card in the deck, the Joyful card. When you have the colour version of the Joyful card in hand (or on your screen), look up the card entry in this book.

After you have looked up the Joyful card entry in this book, take a moment and look at the entire entry. As you will see, the Joyful entry in this book contains a heading and four subsections, these being the **New Energy Archetype**, **Old Energy Exposure**, **Old Energy Dismissal**, **Book of Slavery**, **Book of Power**, and **Book of Keys** subsections. I'll explain what these all mean as we go through this walk-through. For now, just make a note how each entry is organized.

¹³ For LP guidance on healing, see <https://tosas.lightningpath.org/purchase/>

Step One - Read the Entry Heading

Your first step to understanding a card should be to read the entry heading. In this book, **entry headings** consist of the new energy archetype name, and a parenthesized old energy archetype name. In this way, the entry title links the new energy archetype and its old energy Zoroastrian/Masonic equivalent. For example, the entry title for the Joyful archetype is

Joyful (replaces The Fool)

Entry headings thus indicate the new energy archetype of the Triumph of Spirit deck as well as the old energy archetype it is intended to replace. In this case, we are looking at the Joyful archetype which is intended to replace the "Fool in School" archetype of the masonic deck.

Step Two: Examine the Card Imagery

After you understand the entry heading and have a general idea of the new and old energy archetypes being studied, the next step is to put the book or the screen down for a moment and take a look at the card itself, in this case Joyful. As you do, notice the main **surface elements** and colours of the card. Surface elements are simply those visual elements of the card that you notice first. In the case of the Joyful card, the three things I notice first are the joyful figure looking up, blazing points of light (chakras), and a golden "yellow brick" road upon which the joyful soul is descending into manifestation. When you have identified the surface elements, take a moment to absorb them.

When you are done absorbing the surface elements, read the entry heading again. Now compare the entry heading with the visual imagery on the

card. Notice in what ways the new energy imagery on the Joyful card expresses and extends the new energy name. In the case of the Joyful card, that is quite easy. In the case of the Joyful card, we have a joyful figure walking a joyful path on a golden "yellow brick road" into manifestation. The individual is fully activated (chakras ablaze) and fully connect to higher Consciousness from which it, and the road, descends.

Step Three: Read the New Energy Entry

When you have identified the surface elements and linked the elements on the card with the archetype name, read the **New Energy Archetype** section of the entry. As you will see, the Triumph of Spirit New Energy section contains the new energy archetype itself, and additional information and commentary, as required.

Once you have read the Triumph of Spirit New Energy section, spend a few moments thinking about what you have just read, while continuing to examine the coloured imagery of the card. Make sure to make connections between what you read and the imagery on the card. As you should see after studying the entry and the card for a few moments, the basic archetypal message of the Joyful card is simple, clear, and precise. *You are a joyfully incarnated spark of Divine Consciousness entering into physical incarnation.*

Do not be in a hurry to move past this step. Give yourself time to absorb the meanings and the imagery. The first time you work with a card, take it with you for a few days. Keep a card in your bag, put it by your workspace, or put it on the lock screen of your smartphone. Then, whenever you see the image, think about the Book of Spirit

description. Keeping a card with you for a few days is the best way to absorb the card imagery and meaning.

Step Four: Read the Old Energy Exposure Section

When you have spent some time with the Book of Spirit entry, it is time to move on and expose the old energy messages contained in the old energy archetype. The **Old Energy Exposure** section reveals the old energy meanings in the old energy archetype. Take a moment to read the exposure section of the Joyful card now. As you do, spend a few moments comparing the comments in the old energy section with the old energy card image provided to the right of the text, in the same way you studied the new energy commentary and card. You might find it useful to compare the similarities between the Triumph of Spirit image and the Masonic image.

As you will see, when you read the exposure section, it reveals the negative and limiting old energy archetypal meanings. In the case of the Fool card, the meanings are simple. You are a fool in school here to learn earthy spiritual lessons.

Look at the old energy card and see how its symbolism supports the old energy message. Compare the old energy message, which limits, diminishes, and frightens, against the empowering and emancipating new energy message. Notice the difference between the old and new energy archetype. One calls you a fool in school, a soul with a cosmic "lesson plan." The other says you are an empowered and joyful spark of glorious creator consciousness. Which one would you prefer to have guiding your thoughts, actions, and human

development?

Step Five: Make a Choice

When you understand the difference between the old energy archetype and the new energy archetype, you need to make a choice. You can either continue to accept the old energy meanings, or you can replace them with the emancipating and empowering new energy meanings. In the case of Joyful versus The Fool, your choice is to either accept you are a "fool in school" here to learn your lessons, or reject that and embrace the message of your powerful, empowered, and divine Joyful self. It is up to you what you want to do, but you do have to make a choice because the two archetypes are completely incompatible with each other. As regards Joyful versus The Fool, you are either a joyfully incarnated spark of divine consciousness, or a "fool in school." You cannot be both. Like matter and anti-matter, they cannot exist in the same intellectual, emotional, and spiritual space.

Step Six: Dismiss the Old Energy.

If you decide to stay with the old energy, or if you just aren't sure at this point, you can put the book and the cards down and go back to your normal existence. On the other hand, if you decide you want to dismiss the old energy archetypes and replace them with new energy ideas, then your next step is to read the **Old Energy Dismissal** section. The dismissal section gives you the ideas and the energetic oomph you need in order to excise the limiting and enslaving old energy archetypes from your consciousness, and replace them with the emancipating and empowering new energy archetypes.

The Lightning Path

To use the dismissal section, read through it and think about what is being said. Apply the comments to your life and your thoughts. Note, the dismissal section leans heavily on Lightning Path teachings, so if you struggle, visit the Lightning Path site at <https://www.lightningpath.org/> and follow directions to get started with the basic LP curriculum.

Once again, don't be too quick to move through all this. Take some time to understand the old energy archetypes. More important, take some time to see how and where they appear in your life. As you do, you will find these old energy archetypes are everywhere, not only in your thought processes but in the thoughts, writing, and archetypal spaces of all those around you. I won't lie to you; it can be quite the struggle getting rid of them all, but you can do it.

Step Seven: Read the Poetry

Once you have got a basic understanding of the old and new energy archetypes, and once you have spent some time excising the old energy archetypes and incorporating the new energy archetypes, your next step is to spend time in the **Book of Slavery**, **Book of Power**, and **Book of Keys** sections. All three of these books use poetry to explore in more detail old and new energy ideas. If you are not a poetry fan, you can skip these. On the other hand, reading the poetry, especially while in a connected state (see below), can bring additional insight and understanding.

For your information...

The **Book of Slavery** explores old energy ideas as they are aimed at the masses. These are the ideas that you find in exoteric Churches, Hollywood blockbusters, and lower class educational

streams.

By contrast, **the Book of Power** contains old energy ideas that are aimed at the elites. These are the sorts of ideas you find in esoteric Churches like Freemason lodges, in elite educational streams, and so on.

In contrast to the old energy ideas in The Book of Slavery and Book of Power, **The Book of Keys** explores new energy ideas. The Book of Keys has a particular focus, which is to give you an energetic/conceptual leg up on removing the old energy archetypes. The Book of Keys is intended to be a sort of "inspiration to emancipation." The keys are intended to "open the lock" that keeps you from accepting and integrating new energy archetypes.

Note, the poetry sections are "right-brain" sections. They are less about analytics and logic and more about intuition, insight, and creative inspiration. To help here, I recommend you approach the Book of Power, Slavery, and Keys in a "connected" state, either after doing some form of **Connection Practice**¹⁴ or using a **Connection Supplement**¹⁵ when legal in your area.

While connected, be sure to spend adequate time with the cards. It is important that when you "open up" you give enough time and space to allow insight and inspiration to flow. If you experience negative or paranoid thoughts while you are connected, especially those related to old

14 For a run down of connection techniques, see https://spiritwiki.lightningpath.org/Connection_Technique.
15 https://spiritwiki.lightningpath.org/Connection_Supplement. Note, connection supplements have been used throughout human history. For example opium, peyote, mushrooms, and so on, sometimes on their own and sometimes in connection with physical connection experiences like dance, song, or sex. Alcohol today is not a connection supplement because of the CNS damage that results.

energy archetypes, practice **Flow Control**. *Push the thoughts away* and continue your study. You will find that the farther you progress towards the elimination of old energy archetypes, the easier it will be to keep old energy thoughts out of your consciousness space.

Finally, on a related note, balanced activation of your brain is important. If you struggle with understanding the poetry and the cards, if you find yourself "left-brain" dominant, I recommend a little remedial right-brain work. Balanced activation makes understanding and handling the powerful Consciousness that flows through connection much easier. *The Great Awakening: Concepts and Techniques for Successful Spiritual Practice* provides some guidance on activities that can help balance your cognitive facilities and make these archetypal activities a lot easier to get along with.

Of course, as much as you need to use your right-brain to reconnect with the Fabric, it needs to be said that you also need your left-brain. Thus, those of you who are right-brain dominant get identical advice. You need balanced activation. You need your left-brain as much as your right. If you proceed forward while "out of balance" you will run into difficulty and your progress will be stymied. You may even run into pathology if you "lose your footing." Without a functioning left-brain you may become ungrounded and get lost in "ethereal spaces." When combined with mental illness, lack of left-brain sensibility may even experience neurosis and full-blown psychosis. The truth is, if you are going to fully understand these archetypes and not get lost in "ethereal spaces, you are going to need to be rational and critical so you can stay firmly grounded.

Additional Keys to Progress

As noted, balanced brain development is a key requirement of spiritual progress, especially in regards to your ability to understand and absorb empowering new archetypes and reject limiting old energy archetypes. Beyond balanced brain development, if you want to make consistent forward progress, there are a few more things that you should keep in mind, starting with the importance of practice and discipline.

Practice and Discipline

If you have taken a look at the TOSAS, you will know it is complex. The system consists of cards, books, and archetypes all situated in a spiritual context, specifically the advanced spirituality of the Lightning Path, context. To achieve the goal of replacing old energy archetypes with new energy archetypes, you are required to study, analyze, and replace. Doing this can take some work, especially if the old energy archetypes are deeply ingrained. You can facilitate this by taking the card (or cards) you are working on with you, and studying/analyzing them throughout your day. It does not have to be a lot of time; between fifteen and sixty minutes a day should be enough.

Iterative Approach

In addition to disciplined daily practice, you are also going to need to take an iterative approach to your study. You are going to have to read, re-read, and maybe even re-re-re-read the resources. You are going to have to do this because this planet's archetypal soup is complex, and the exegesis

The Lightning Path

and replacement presented here is complex as well. Despite the juvenile characterization that some may give to the archetypal system in general, or the Masonic implementation in the Western tarot in particular, it was created by master psychologists (at one time these people would have been called "high" priests) focused with clear intent on social control. Even when stripped to essence and presented with clarity, wrapping your head around the archetypes is a major undertaking. That is the nature of **The Beast**, so to speak. If you want to understand the full depth and breadth, if you want to clear **The Beast** from your consciousness, you are going to have to spiral your way into the depths. The only way to do that is to keep coming back to the material until you have a firm and complete grasp. A tentative sip from a tiny little tasting spoon will not be enough.

Patience

Besides practice, discipline, and an iterative approach, patience will also be required, especially upfront. This is because you are probably going to find that "getting into" the archetypes can be a bit difficult at the start. You might even find that for the first couple of attempts, your eyes will glaze over and your focus will dissipate. If that happens, be patient with yourself and try again. It happens not necessarily because of the complexity of the systems, and not because there is something wrong with you, but because layered on top of the natural complexity of the archetypal soup, and interfering with appreciation of the full breadth and depth of the dish, is an ideological glaze that can prevent you from going deep. This ideological glaze is often fear-based and/or rooted in damaged self-esteem and the confusions propagated by the old energy archetype system. You'll know this is an

issue here if you find, despite the fact that you want to engage in archetypal revision, you are giving yourself excuses and allowing distractions to pull you away from your study.

If you find yourself constantly distracted, never finding the time you need to get through these materials, pay attention to your emotional responses and thoughts when you do approach the materials. If it helps, write down the feelings and thoughts you get when trying to do the archetypal work in your **Healing and Connection Journal**¹⁶ so you can track, analyze, and identify whatever it is that is causing your avoidance. Are you feeling fear about something that might come up in your mind? Write that down. Are you thinking thoughts of unworthiness? Write that down. Are you feeling feelings of intellectual or spiritual inadequacy? Write that down. Writing the thoughts down will help you focus on what is blocking you, and give you the clarity you need to overcome fear and reprogram your thoughts.

To summarize, the overall message of this chapter was simple. Archetypes originate in the human imagination. Archetypes are powerful, especially when combined into a creation template used to control the direction of creation. Elites understand this and co-opt archetypes laid out by mystics like Zoroaster, Christ, etc., to create creation templates that they use to manipulate the masses. If we want to change the world, we need to swap the old energy archetypes out for new energy archetypes that organize our thoughts and perceptions along new energy lines, and that emancipate us from the power and control of elites who manipulate for their agenda.

¹⁶ https://spiritwiki.lightningpath.org/Healing_and_Connection_Journal

That's all there is for this introduction. To get started, pick a card (either in a print deck or online) and start practicing.

Archetypes and reConnection 2

In the last chapter of this introduction, we learned about archetypes, creation templates, and how these are used by those "in the know" for political and economic reasons. The overall message of that chapter was simple. Archetypes originate in the human imagination. Archetypes are powerful. Elites understand this and co-opt archetypes laid out by mystics like Zoroaster, Christ, etc.. They construct creation templates that they use to manipulate the masses. If we want to change the world, we need to swap the old energy archetypes out for new energy archetypes that organize our thoughts and perceptions along new energy lines, and that emancipate us from the power and control of elites who manipulate for their own agenda.

The process of emancipation is only one part of the process that is "initiated" when you study TOSAS archetypes. In addition to emancipation from old energy archetypes, TOSAS study also leads to personal and collective **empowerment**, and **connection**. This process of emancipation, empowerment, and connection is illustrated in three TOS archetype cards included here for your consideration. When we use the TOSAS archetypes to clear and connect, we refer to the TOSAS cards as a **Connection Appliance**.¹ A connection appliance is any tool that helps clear consciousness of blockage and connect us to our own higher Consciousness.

¹ https://spiritwiki.lightningpath.org/Connection_Appliance



How does studying the TOSAS help with empowerment and, in particular, connection? In a nutshell, the archetypes help you align **Bodily Ego** with **Spiritual Ego**² so that Consciousness can flow into the body easily. If you imagine your bodily ego connected to your spiritual ego with a water hose, and if you imagine that water hose kinked so

² See https://spiritwiki.lightningpath.org/index.php/Bodily_Ego and https://spiritwiki.lightningpath.org/index.php/Spiritual_Ego.

that water cannot flow through, then working with archetypes helps you unkink the hose and let "the water" (i.e. Consciousness) flow.

It needs to be noted that the process of connection (more technically correct reconnection) can be challenging. When compared to the dim light of your everyday **Normal Consciousness**,³ the bright light of the higher **Consciousness** you connect to can be discombobulating, especially when you are dealing with psychological or emotional damage caused by a **Toxic Socialization**.⁴ If you are not careful and prepared, various form of **Connection Challenge** and even **Connection Pathology** can result, particularly when you are using effective **Connection Practices** and **Connection Supplements**.

If you have been following along with the Lightning Path, rest assured you are being properly prepared for reconnection. Still, as strong as the LP preparation is, we still need to issue a bit of a repetitious warning. There is lots of spiritual "power" here. You see only a dribble of this power when you have connected dreams and **Intuitive Glimmering**, and most people can handle that. These are not overly powerful and they are easy to ignore. The same cannot be said of more powerful Connection Experiences, like **Clearing Experiences** or **Completion Experiences**. These cannot be ignored and they can easily lead to **Flooding**, **Ego Explosion**, and other forms of **Connection Pathology**, to the point of Spiritual Emergency or even psychosis. We are not saying this to scare you. We are just saying, be careful. Make sure you've done the basic LP training before you go further with this book and, moving forward, remember the

³ https://spiritwiki.lightningpath.org/Normal_Consciousness

⁴ https://spiritwiki.lightningpath.org/Toxic_Socialization



following sage advice.

You are in control

The first word of advice is this: you are in control. Barring the presence of untreated **Spiritual Infection** (WKBK II), organic damage to your crown chakra (i.e., Brain and CNS), you have control of the process, both physically and spiritually. If you find that you are making a powerful connection and becoming overwhelmed, stop immediately. Put the cards down, stop reading the books, walk away, and give yourself as much time to rest, integrate and process as you need. Nobody is forcing you to move forward unless forward if you are comfortable. Remember, this is not a race

and you are in control. Take the time you need to integrate and rest and always remember, you control the process.

Help is standing by

The second word of advice is this: if you need help, get help. If you run into trouble, get help. IT is OK to feel Connection Challenges; but, if you are experiencing any of the various forms of Connection Pathology, and especially if these pathologies are getting worse, get help. Get help from traditional counsellors or visit the [Lightning Path Services page](#)⁵ to see if the LP seem right to you. You might also avail yourself of the [LP forums](#).⁶

Stay positive

A third piece of advice is this: be positive in your approach. The energies behind these archetypes are powerful. As noted all the way back in *Lightning Path Work One: The Basics*, you need to feel competent, confident, and empowered, especially when you approach these cards. Try not to pick up the cards when you are angry, frightened, alone, inebriated, "baked," ungrounded, or feeling weak and disempowered. Since the new energy archetypes are wholly positive and empowering, approaching them from a negative or disempowered state can make it more difficult to properly incorporate the new archetypes.

This is important.

If you approach the archetypes from a negative state, you will almost automatically modify the archetypes or inject disempowering memes

⁵ <https://www.lightningpath.org/services/>.

⁶ <https://www.lightningpath.org/forums/>.

from the old energy constellations. Of course, it is not always possible to feel positive and empowered when you approach the archetypes. If you do pick up the cards from a negative space (hoping perhaps they will help you out of that space, which they may), I recommend you do so with *Triumph of Spirit Book One: Spirit: Healing and Activating with the Halo/Sharp*.⁷ That booklet helps you focus the powers of the Triumph of Spirit archetypes Sharp in a healing way. It is best to use that book when you are in need of a healing touch.

Take care of yourself

A fourth piece of advice is this: take time for self-care. This is very important. This is not a race and you get no special rewards for finishing first, so take the time you need. If you find you are struggling with things, take a breather. If you are having trouble with the concepts, go back and read previous LP materials. Waking up from your spiritual coma can be hard work, challenging, and even stressful at times, so take time for self-care.

If you are tired, rest.

If you are hungry, eat (healthy food).

If you are sad, cry.

If you are angry, find the source.

If you are happy, rejoice.

If you need help, reach out.

The bottom line is, *you need your physical body*. If you don't respect it and take care of it, not only will it not be able to handle higher Consciousness, but it will die, and that would be a

⁷ <https://press.lightningpath.org/product/book-triumph-spirit-healing-activating-halosharp/>

huge waste. If you want Consciousness to enter the body, you need a healthy physical unit to put it in.

Cleansing and Connecting

Finally, a fifth piece of advice for you is this: *prepare your space*. If you are going to get the most of your healing and connection work, you need to learn to properly prepare your spiritual, psychological, and emotional space. You do this to a) clear any mental fog that may have accumulated, b) raise your level of awareness so that you are clear and focused, and c) clear away any negative emotions or thoughts you may be harbouring. Clearing your space puts you in the proper frame of mind and emotion and gets you ready to think about and absorb the new energy archetypes.

There are two important steps to cleansing your space. **Your first preparatory step** is to cleanse your environment. To do that, simply tidy up and organize. Having a neat and organized environment will help you keep your thoughts focused and clear. Too many things to focus on can be distracting, especially these days when iPads, iPhones, and all the other ego devices we've created and that are always so close at hand. Of course, it is not just technology. Even books on a shelf can be, when you are in a receptive state, a distraction that is hard to avoid. You want to be able to focus in on the card imagery and archetypes, and having a neat and organized environment can help in that regard. Clear your environment. Note, this cleansing is over and above the requirement that you establish **Right Environment**. No amount of cleansing will help you if your environment remains toxic and abusive.

Your second preparatory step is to cleanse

your mind. You cleanse your mind using a **cleansing mantra**. A cleansing mantra is simply an intent statement that focuses your attention on emancipation and empowerment. Say to yourself, "I wish to access the transformative energies of the Book of Triumph", "I wish to smash through the chains that bind", "I wish to see with clarity and precision", or something like that. If you are a visual person (and even if you are not), take a look at the Halo/Sharp emancipation card, because that card says it best. Repeat your statement(s) and look at the emancipation card as often as you need to keep your mind focused with clarity and intent on the task at hand. If you forget, if your mind wanders, or if you find yourself descending down a distracting or negative spiral, repeat your cleansing mantra.

You can, if you wish, facilitate your mental cleansing with incense, sweet grass, chanting, singing bowls, or whatever you want. Keep in mind however that it is not about the accoutrements, it is about your thought processes. Clearing your thoughts while rubbing a bowl builds an association between the process and the tone, making it easier to jump into the process as the association builds and strengthens. By all means do what you can to speed the process but remember, to get the best effect, clear your physical space with actions, and cleanse your physical mind with a cleansing mantra.

If you need additional advice and guidance, visit the LP Connection Toolkit page for additional connection mantras, visualizations, and such.

<https://www.lightningpath.org/tools/connection/>

Part II

Archetypes

Joyful (replaces The Fool)



New Energy Archetype

This is an identity archetype.

This is you.

This is who you really are.

This is what you are really like.

This is your true essence.

This is your true nature.

This is your soul.

This is your spark.

This is your higher self.

This is your true identity.

Know this: you are no “fool in school,” you are no fool in incarnation. You are a glorious spark of God consciousness and you emanate from glorious divinity. Embrace this truth and be joyful and free!

In this card you are shown walking into birth and expressing the will of God, which is Your will. You are connected to Source, to the Fabric of Consciousness, and you are joyful in your magnificence. You are, after all, a spiritual emissary here on a divine mission. However, you are probably not aware of this fact just yet because, like all others who enter into manifestation under old energy conditions on this earth you are still subject to the limitations of the Blindfold. Know now that the limitations of the Blindfold can be overcome any time you wish. Simply set your intent to awaken, step onto the Path, activate, and ascend.

To step onto the path, set your intent and recite an **awakening mantra**. Say to yourself (and to your guide network),

“I wish to move forward.”

“I wish to awaken.”

“I wish to ascend.”

There is much for you to remember, but it is easier than you think. Your time to return is now! Awaken and activate so that you may renew and reveal your true glorious Self to yourself, and to others. Remember and rejoice in the glory of your true Divinity.

Old Energy Exposure

In old energy cards, this is the Fool that you are. You are the royal idiot, the naive servant, the unwashed child, the “raw, infantile”¹ aspirant, the “Fool in School.” Old energy versions of this card show you ready to step off a cliff and into manifestation. Old energy versions emphasize separation, descent, and (most importantly) imperfection. You are a child attempting to evolve past your bestial nature. You are broken and impure. You are, as A.E. Waite suggests, the “spirit” in search of experience. Moving away from the perfection of God and into the degrading dirt of incarnation, ready to descend into the domain of the Devil so that you might learn, grow, and one day ascend.

In the *Book of Slavery* and *Book of Power* you are told you are rejected (from Eden) because of your sinful behaviour, that you are stupid and unevolved, that you are confined by “unresisted passion”, or that you have got karmic debt to clear. You are a Fool in School and this life is your opportunity for redemption/evolution. All you have to do is submit to the Wheel and pass the tests.

If you are Judged worthy, then perhaps you may graduate to higher consciousness and enter into the inner sanctum through the ornate-golden-gate. Of course, entry is available only to the chosen few. The message to the slaves is always “maybe in the next life, if you behave.”

Old Energy Dismissal

In the new energy we put behind us all the nonsense. Therefore, in contrast to the old energy message of degradation, tutelage, and sin, the new

¹ Stewart (2015). *Fellow of the Craft*: FmI Publishing, pp. 87.



energy message emphasizes our connection to Source and our shared **power** and Divinity. The deep message, *even if it cannot be fully received at this point*, is we are Gods incarnation and not fools in school.

In the new energy, we embrace our individual and collective divinity, to the extent that we are currently capable and able, always striving for a stronger connection to our highest, Joyful soul.

Perhaps it is only a glimmering at this time.

Perhaps it is merely intellectual acceptance.

Whatever, nevertheless, and even so. This is a step forward on the path to reconnection and reclamation of your glorious divinity. Embrace your true divinity. Begin (or continue) your joyful journey home to your highest, and most glorious, Self.

Book of Slavery

Child, here is your birth.
This is your soul.
You are fallen from grace.
You are descended from apes.

But by dint of hard work,
And a bit of God's grace.
Find your way to the top,
Win you now this great race.

Now listen up close,
And I'll tell you a joke.
It's a simple meow,
Just like pulling a plow.

Clear your karma, clear debt,
Pay off sin, show regret.
It's so simple, sublime.
Just like ringing a chime.

This is surely no joke.
God he gave you this yoke.
And your job is to bear,
So just grin with blank stare.

Cause you're not fit for more.
Just these endless black chores.
Just eternity's grind,
At the back of the line.

Book of Power

Chela, here is your birth.
This is your soul.
You are fallen from grace.
You are descended from apes.

But by dint of hard work,
And a bit of God's grace.
Found your way to the top,
Won you now this great race.

This is surely no joke.
God, he gave you this yoke.
To see if you could find,
Something precious inside.

And your job was to bear,
To create strength deep in there,
To climb up these great stairs,
To stand tall, it's quite rare.

But I think that we see.
Yes I think it is there.
It's a spark. It's a fire.
It's a gene deep down there.

So step out of that line.
Come on over, it's fine.
Here's the robe, this you'll wear.
Here's a secret we'll share.

Book of Keys

Dear One,

Don't play The Fool.

Don't deny these few rules

There is no secret path.

There is no word to pass.

No soul wins any race.

No soul's fallen from Grace.

There is no foolish game.

There is no one to blame.

There is no deadly sin.

There is just God within.

So please cease and desist.

And peer now through the mist.

Please now wipe off that frown.

And quit acting like clown.

We came here as the sun.

We came here just for fun.

We came here with God's speed,

To do God's sacred deed.

And if you follow this Path,
'Twill lead you through the pass.

If you follow these rules,
Leave forever their schools.
See through transparent game,
See God's name held in vain.
See the source of the sun.
See we came here for fun.

And as awakening dawns,
As you put halo on,
And the Body it glows,
Up in heaven we know.
You are gods of the sun.
And your work's finally done.
So stand up, or step down.
As equals gather round.

Put your safety belt on.
Found the keys to the dawn.
And the key? That's inside!
We are God.
Walk with pride.

The Master (replaces Magician)



New Energy Archetype

In the new energy, this is an identity archetype. In the new energy, this card provides additional information about who you are and your purpose for incarnating, which is to work on the Divine Plan, manifest Divine Will, and complete the Great Work so that the planet may **graduate** and ascend.

This archetype presents you as emissary of energy and light.

This is you as an Adam/Eve Kadmon.

This is you as a Master of Divine Creation.

Please take note, despite your direct connection to Divine Will, you are no passive receptacle. Despite your position of service, you are no mere vessel unto which Divine will is poured.

You are no simple servant of God.

You are no empty conduit for Spirit.

You are no passive lamb.

You are no fallen angel.

You are no descended ape.

You are no fool in school.

The message of the master archetype should be clear. You are the caretaker, the nurturer, and the gardener. You are the architect, the will, and the way. You are an instrument of Divine will, but you are active and in charge all the same. You are a master of manifestation and creation. More to the point, having incarnated into a body thousands of times, *you are an expert at the thing that you do.*

The message of the master archetype should be clear. Quit playing the fool, stop submitting before authority, and be the active and masterful creator that you are.

Old Energy Exposure

In the old energy, the message is mostly the same. In the old energy, this card also represents a magician, i.e. someone with control over creation. In the old energy, however, this is not who you are. In the old energy, this is who you might become if you pass the tests, learn the rules, and submit to the authority of those above (note the submissive posture and sacral

chakra focus of the old energy magician card). Old energy versions of this archetype, while they do represent mastery, always say you must work/train/struggle/achieve/attain first. Only after “the trial” do you graduate and become the master. Thus, in the old energy, this card represents submission, tutelage, and the beginning of trials and tribulations purportedly designed to test and temper (see old energy **Temperance** archetype). When you are submissive, receptive, and compliant, then you are prepared and ready for training.

Note, this old energy archetype intimates and reflects venal hierarchies. That there is a hierarchy here is revealed by Papus in the cups, swords, pentacles, and wands of the old energy cards. Notably, this is a caste hierarchy, which is a rigid and presumably divine/evolutionary division of labour set out by God/nature.

These symbols correspond with the four great human castes. The men of Yod, or the Inventors, the Producers. The Nobility of Intellect. The men of He, or the depositaries of the great truths discovered by the men of Yod: the Savants, the Judges. Professional nobility. The men of Vau, or the guardians and defenders of the former: the Warriors. Nobility of the sword. The men of the 2nd He, the multitude from which the other classes are continually recruited: the People.

Yod He Vah He is said to be the name of God. By associating the casts with this name, Papus legitimates the venal hierarchies of this world.

In the *Book of Slavery*, you take a position amongst the multitudes (He), the guardians (Vau), the savants (He), or the producers (Yod).”

In the *Book of Power*, you are a chosen one, a magician in training. If you submit, show your loyalty,



follow the rules, and learn your lessons, you will rise above all in order to manipulate and control the world.

Old Energy Dismissal

It would be silly to argue that mastery is not important, or that we are not here as co-creators of this world. It would also be silly to suggest that discipline, practice, purpose, and passion are irrelevant to progress forward. In the new energy we do not reject mastery or magic, we reject social class, hierarchy, and servitude. Further, in the new energies, we do not provide justification for slavery and toil by pretending it is part of the divine “body” of God. In the new energies we seek joyful, creative, mastery and, more important, we

The Book of the Triumph of Spirit

offer it to all, not just a “chosen” few.

In the new energy we do not say, “You are here to be tested.”

In the new energy we do not say, “You are here to learn.”

In the new energy we do not say, “You must prove yourself worthy.”

In the new energy we do not say “Submit and you will win.”

In the new energy we do not say, “Work and be chosen.”

In the new energy we do away with such ideological nonsense and simply remind you that you are already a master of creation. There is no need for tutelage and struggle. There is no need to prove your worth.

Understand, you are already a fully **empowered** member of the glorious family of Spirit. You are already a master of creation. All you have to do is respond to the **calling**, wake up and remember.

Remember, you are not new in this game. You have incarnated many times before, on this world and others. You are masters in incarnation. You are older than this physical universe. You are experts at physical creation.

Remove the Blindfold, realize, and remember.

Awaken, activate, and ascend.

Book of Slavery

Child, this is the master magician.

This is the mage incarnation.

This is power o’er the world.

This, by the grace of your Lord.

Are you worthy and strong?

Can you sing our great song?

Will you follow our might?

Will you win o’er this great fight?

Pick up tools that are there.

They are fire, earth, air.

And the water below,

These are tools, now go sow.

And show us what you’re worth.

Make us proud of your birth.

Make us full, give us mirth.

Pass us wealth of this earth.

And if you’re good and strong,

If you harmonize song,

Then one day you might find,

You’ve passed tests so sublime.

And you’ll graduate first,

To a place, to a berth.

And leave hell far behind,

As you advance in the line.

Book of Power

Chela, this is the master magician.
This is the mage incarnation.
This is power o'er the world.
This, by the grace of your Lord.

Are you worthy and strong?
Can you sing our great song?
Will you follow our might?
Will you win o'er this great fight?

Pick up tools that are there.
They are fire, earth, air.
And the water below,
These are tools. Don't you know?

Now show us what you're worth.
Make us proud of your birth.
Make us full, give us mirth.
Pass us wealth of this earth.

And if you're good and strong,
If you harmonize song,
Then one day you will find,
You've passed tests so sublime.

And you'll graduate first,
To a place, to a berth.
And leave hell far behind,
As you advance in The Line.

Book of Keys

Dear One don't be a slave,
And don't be the lamb.
Don't be diminished,
Don't be now damned.

Lift up your head,
Raise up your eyes.
Look you up now,
Face up to the sky.

Smile at the sun,
Feel the warmth that is there?
Smile with the moon,
Start your journey with flair.

Draw light power down,
Till it touches the ground.
Draw the energy up,
Drink your fill from this cup.

Now raise left hand and right,
One to sky, one to night.
Accept beam that is there.
Accept power to spare.

Say "I'm nobody's slave".
"There'll be no early grave".
"And I'm nobody's lamb".
"And I will not be damned".

"I am one with the sun".
"I am God's hope for fun".
"I am Master that's here".
Pip hooray. Give a cheer.

Formation (replaces High Priestess)



New Energy Archetype

This is an activation card. In this card, we meet Isis, the great mother and gate-keeper of energy balance.

See Isis embedded in energy? See Isis as she manages the flow! Isis represents the formative (or yin) energies of creation as they balance and guide the creative flow. Formation is the guiding hand that forms and directs the **forceful** yang energies represented by the conjoint Force card.

In a new energy configuration, Isis/Formation/Yin (represented by the darker pillar) works in balance with Mars/Force/Yang (the lighter pillar) to mani-

fest creative intent.

This is the way it should ultimately be, for as noted in *The Book of Life*,¹ balanced use of energy manifests health, wellbeing, longevity, and calm, joyful, creation. Most important, balanced use of energy allows for the full expression of divinity. For these reasons, balanced use of energy is almost always the preferred mode of creation. However as noted in the BOLIFE, sometimes, and particularly when a planet is in the “expansion stage” of its evolution to full connection, unbalanced energy may be required.

Old Energy Exposure

In the old energies, during the expansion stage of planetary evolution,² energy is used out of balance. In the old energy High Priestess card, the High Priestess is clearly shown tipping the balance of force/formation in the direction of the lighter pillar of force (see what direction her dress flows). She is revealing that in the old energy, force is used out of balance as we undertake the Great Work, which is the work of evolving/**graduating** a planet.

It should be noted, suppression of formative energies is accomplished via association. In the old energy, formation/yin is associated with the female form. In the old energy, we are taught that the female form is primarily yin, while the male form is primarily yang. The female holds the “sacred feminine” while the male holds the “sacred masculine.” In an old energy world, men are taught to identify with yang energies while women are

¹ <https://spiritwiki.lightningpath.org/index.php/BOLIFE>

² https://spiritwiki.lightningpath.org/Stages_of_Planetary_Evolution.

taught to identify with yin. This association begins at birth when female infants are given one colour of blanket (usually pink), while male infants are given another. Through years, this **binary gender**³ association is built up until it is firmly established in consciousness.

When the formative yin energies have been successfully associated with the female form and the forceful yang energies with the male form, then the female form is brutally suppressed and the male form is unreasonably exalted. Women are constantly told that the formative yin energies represent weakness and servitude and that their own association with yin leaves them childish and diminished. Men, on the other hand, are told they are forceful, competent, strong, and in control, and that full expression of these energies is right and proper. Men are encouraged to exalt their force energies, which have been associated with the penis form, and deny their feminine/yin side.

When the formative yin has been associated with female form and the forceful yang has been associated with the male form, when the female is thoroughly suppressed, and the male thoroughly exalted, formative/yin energies are automatically diminished while forceful yang energies are automatically exalted. In this way, through binary gender socialization and the binary association of formative yin and forceful yang energies, imbalanced energy flow is established.

Note, the suppression of formative/yin energies has many critical consequences for our reality. *The suppression of yin blocks the development of the body's chakra system.* More specifically for our purposes, the suppression of formation/yin energies leads to conditions which undermine the

³ https://spiritwiki.lightningpath.org/Binary_Gender.



development of the crown chakra (i.e. brain and CNS). The atrophy caused by imbalanced energy reduces the amount of Consciousness (i.e. it lowers the **Consciousness Quotient** (CQ) of the physical unit). As the CQ of the body declines, the **Blindfold** (esoterically known as the Veil on Consciousness) is created.

You can see this “veil” represented quite clearly in the Masonic High Priestess card above. In both the *Book of Slavery* and the *Book of Power*, the High Priestess, through suppression of yin, blocks access to the ocean (i.e. Fabric of Consciousness) behind.

In addition to damaging the crown chakra, thereby facilitating the creation of a veil/blindfold, the suppression of yin and the conditions created by this suppression damages the other chakras in the body's system. Ultimately, systemic damage to the

The Book of the Triumph of Spirit

body's energy system neuters the human form.

Note, a neutered human being is very easy to control and exploit. In as much as the suppression of yin serves the needs of the System, those who serve the System are the ones most vocal about the "sacred" nature of binary gender, and most desperate to ensure its continuation.

To summarize, formation is the yin side of the cosmic energy equation. For reasons explained in the BOLIFE, in old energy environments, formative energies are suppressed. The formative yin energies are not suppressed directly, but via their association with human gender. Adjectives that diminish the female are used to describe the female while adjectives that elevate the male are used to describe the male form. Consequently, men and women themselves, in the course of their everyday thinking and actions, suppress yin, elevate yang, unbalance the energies, impose the blindfold, and harm themselves and others.

Old Energy Dismissal

Moving forward into a new energy configuration requires us to break the association of yin with the female form and yang with the male form. To break the association, understand that force and formation, yin and yang, are just energies that we, as incarnated creators, use to create our experience, and this world. Understand that we can use this energy in whatever balance we require. Also understand that it is best to use force and formation in balance.

If we want to realize our full creative potential, both as individuals and as a human collective, we must de-gender yin and yang, formation and force, and accept them for what they are, forms of energy

to be used in whatever balance is required to support our creative efforts. See them only as energy. Devalue neither one nor the other. Whatever the sex of your body, draw force and formation in balance to manifest the **world** you desire.

Book of Slavery

Child, this is the weak and the feminine things.
This is the primitive instinct you bring.
This is emotion and fear above mind.
This is the negative servant of mine.

This is evolutionary endowment and fate.
This is the yin in a weak, putrid state.
This is the yin, suppressed foul and impure.
This is the yin vile and dark, that's for sure.

This is held over, don't you know.
From some ancient time long, long ago.
This is the cause of the grand cosmic fall.
This is why your God says, now you must crawl.

Book of Power

Chela, this is the lesson,
This is the test.
Many will study,
A few pass the rest.

In rage they will struggle,
But have not the strength.
So many will fall,
Cannot hold out for length.

But listen here now
To this secret we'll share.
Obey now our law
And confusion we'll spare.

Defer in our Temple
And lay down your mind.
The Veil we shall lift
And The Law no more bind.

Just push yin down low.
Play your part in our show.
Do one disagreeable task.
Only then will you pass.

Book of Keys

Dear One.

A choice you have here,
Between hatred and sin,
And the love that is deep deep within you
To begin.

But a dragon before you,
A fear in your mind,
Keeps you panicked and sweaty,
Always turning aside.

So what will you do?
And where is the key?
Will you ever step forward,
And divinity see?

Yes my dear, you may come.
Please step forward, don't run.
It is time, don't you see?
That you picked up the key.

It is time. Hear the chime?
See the depth in this rhyme?
Hear the message that's here?
It's for you. Give a cheer!

So now please listen up.
To light top chakra up,
It's easy as air,
If you treat all life fair.

Feel the energy there?
As it tickles your hair?
Fill up Isis's cup!
Fastest way to wake up.

Rebirth (replaces Empress)



New Energy Archetype

This card is an graduation card. This card represents a nurturing environment. At a mundane level, this card represents your personal, social, and work environments. At the highest level, this card represents Gaia, the Spirit of Earth and the Mother of all life, in all her creative splendour, power, and glory. In other words, this is the planet and the systems which make life (which is the birth of Consciousness into physical creation) possible. This archetype represents the birth/rebirth of Consciousness into physical reality and the planetary systems, networks, and supports which make it all possible.

Understand, Gaia is not a mere rock. Gaia is a manifestation and emanation of powerful Consciousness fully aligned. Gaia is a living, breathing, evolving, manifestation of the grandeur and glory of God. Gaia is a magnificent Garden of Eden, a wondrous and powerful place of magnificent love, life, and intelligence. Most important, Gaia is a life support system upon which we depend.

Gaia is our comfort and our cradle.

Gaia is our light and our life.

Understand, *Gaia is the place of our birth and our rebirth.*

Sadly, many no longer recognize the wonder and the glory of it all. Our eyes are blinded by indoctrination and we run roughshod over our sacred home, harming ourselves and all life in the process. We exploit her largess and assault her grandeur. Our blind, greedy offences upon Gaia are the height of human arrogance, the pinnacle of human greed, and the ultimate in human confusion. Ongoing destruction of Gaia is a cause of debacle and a potential source of our undoing.

Without a fully functioning planetary system, there is no life. Thus, in the new energies, we understand and acknowledge the intelligence, power, and glory of Gaia and her critical support role. Without her, we have nothing. Without her, we can be nothing. We need to change our attitudes and behaviours and instead of destroying and undermining, we must learn to participate and assist in her sacred task, which is nurturing and supporting the ongoing rebirth of Consciousness into physical creation.

Old Energy Exposure

In the old energies, the graceful, creative, and nurturing power of Gaia, the great Mother, is diminished and debased. In the old energies, Gaia is converted to a female archetype, an Empress on a throne. She is an authority figure, but her role is not direct and nurturing action supportive of the birth of Consciousness, or even direct authority. As Papus notes in the Tarot of the Bohemians, her role is “passive influence.” In the old energies the female, if she has power at all, has it only through silent passivity.

Note, in the old energy, it is not just that the nurturing energies of Gaia/rebirth are converted to female authority and power, and then restricted to passive influence. In the old energy, nurturing and life-giving powers are corrupted and debased as well. In the old energies creative and recreative support, nurturing care and attention, love and compassion for life, are debased and filtered through a lens of hierarchy, privilege, worthiness, and exclusion. To be as clear as possible, in the old energies, the empress gives her love only to those who are deserving. As A.E. Waite suggests in his Pictorial Key to the Tarot, she communicates deep secrets only to the “elect.” She provides her “best” only to the chosen few.

In the old energies, this is an implementation of foul conditional love and provisional forms of support. In the old energies, a love and support that should be provided to all is degraded and confined to a few “favourites.” With this archetype, hierarchy, privilege and exclusion, core features of the old energy System, are enshrined as natural and God-given. In the old energy, tragically, the mother, an individual’s first and most important contact



with the **world**, most often delivers the message, often with violence and abuse. Indeed, in the old energies, the nurturing, supporting, and caring energies of the mother become twisted and violent exclusionary forces. In the old energies, instead of embracing love, care, and nurturing, protective, support, we embrace violence in the name of exclusion, and harm in the name of deservance. The worthy get love; the rest get the lash.

To summarize, under the old energy Empress, the loving, nurturing, creative and procreative care of Gaia becomes exclusionary suffering and pain for all those deemed unworthy. Ideology and excuse sugar coat the blows, but we are diminished and damaged all the same.

As a consequence of the corruption of the Gaia energies, this planet, and also our homes and work-

The Book of the Triumph of Spirit

spaces, become sites of domination and exploitation rather than sites that support Consciousness, spiritual unfolding, and creative exploration.

Old Energy Dismissal

Moving forward into the new energies, we must reject old energy corruptions that undermine the love, protection, and the supports required for human development and connection. Earth, our environments, our homes, our workplaces, etc., are not supposed to be places of violence, domination, exploitation and abuse. They are supposed to be places of love, laughter, Consciousness, and light. Our spaces are not supposed to be paradise for the privileged few and hellish prisons for the exploited masses. They are supposed to be places for all the myriad children of Earth to birth Consciousness, explore, and create.

To move forward into the new energies, put aside concerns for domination and oppression and embrace unity, equality, creativity, and free expression of Consciousness.

To move forward into the new energies, put aside violence and abuse and embrace compassionate, loving concern and support for all planetary life.

To move forward into the new energies, embrace unconditional love and support for all living beings.

Understand that authentic healing and reconnection are only to be found in environments of love, caring, and acceptance.

Understand, the last evolutionary step can be taken only by a species that connects with the Light at the core of its being.

This is not a question of what God wants or what

nature decides. It is a question of human choice and action. It is through your choices and the action and inaction these choices generate that the world around you is created.

Do you wish to live in a world of hierarchy and exclusion?

Do you wish to live in a world created by greed and hatred?

Do you wish to live in a world where children suffer and starve?

Or, do you wish a Garden of Eden where, united in a cosmic family of Spirit, we are all loved, nurtured, protected, supported, and we all dance with consciousness, joy, and great love?

Make your choice now, but remember, Gaia is the mother of our birth and the supporter of our life. All life, even yours, depends on her health. All life, even yours, depends on connection to her. We cannot have a healthy body, and most importantly, we cannot regenerate our physicality, while we remain unconnected to Gaia. Understand, Gaia will not enable further violence and destruction. Henceforth, Gaia will refuse connection to a heart that is filled up with hate. This is not meant as a judgment. This is a safety measure. It is an obstacle only if you make it out so. Like all good parents, Gaia instantly forgives. Simply own and atone. To move forward, own your bad behaviours and atone for the damage you have done. Always remember, no matter what you have done, you are always welcome in The Garden. To join the chorus of ascending connection as we finally **graduate** this world, release greed, hatred, power, violence, and exclusion, and let Gaia's love light come shining.

Book of Slavery

Child, this card represents the mother.
This card represents the home.
This is the purview of the female.
Descended to violent syndrome.

This is the lack of good care,
This is the cold, icy stare.
This is a family's violent affair.
That keeps you quite low on the stair.

Book of Power

Chela, this card represents the mother.
This card represents the home.
This is the purview of the female.
Descended to violent syndrome.

This is the lack of good care,
This is the cold, icy stare.
This is family's violent affair.
That makes a superior square.

Book of Keys

God. Now listen, dear one, and reflect,
On the world that we strive to perfect.
It's not men who alone lead the line,
For all voices must rise over time.

And the female does not simply hiss,
Or keep us from achieving our bliss.
She is powerful in her own right,
And she shines just as bloody well bright.

So let go of this cycle of blame,
Where we strike out, defile, and defame.
Each day is a chance to renew—
To honor earth, the body, the true.

So as flower please open to this.
Embrace love, release hate, don't dismiss,
Create a kind world, a new Shangri -la,
With increasingly glorious awe.

Force (replaces Emperor)



New Energy Archetype

This card is an activation card.

This card represents creation.

This card reveals causation.

This is what prevents cessation.

This is how we achieve **graduation**.

More to the point, this card represents the force (a.k.a. yang) that drives it all forward.

Know that there is nothing particularly bad or negative about force. As with **formation**, force is a necessary energy of creation. Without force, creation does not occur. The equation is simple.

Force drives creation while formation shapes it. Put another way, adequate, appropriate, and balanced use of force (with formation) is a necessary feature of healthy creation.

Without the energies of force/yang, or when the energies of force are too weak, creation cannot move forward. On the other hand, without the energies of formation/yin, or when the energies of formation are too weak, chaos, explosion, and decay of creation are the inevitable results. Understand, God/Spirit/Consciousness always uses both force and formation adequately, appropriately, and (usually) in balance.

Appropriate use of energy is key for creation,

Appropriate use of energy is necessary as you go forth and create the **world**.

In the new energies, we recognize the significance of force and formation. In the new energies, we understand that the two go together. In the new energies, we use force and formation in an adequate and appropriate balance so that we create a wondrous new Garden of Eden.

Old Energy Exposure

In the old energies, and for reasons explained in more detail in *The Book of Life*, force is exalted and unfettered by formation. In the old energies, for evolutionary reasons, force, i.e. the drive of yang is elevated while the formative influence of yin is diminished. **This is accomplished primarily via presentation and disconnection.** As a consequence of disconnection, venal hierarchies of accumulation, privilege, and power are created

(a.k.a. The System) and develop.

In the old energies, this card represents the true nature of the System *and* the **Mechanisms of Compliance** (i.e. force and ideology) that maintain, support, and advance the System. As regards ideology, this is simply the lies we are told and the excuses that are offered to justify power, authority, and accumulation. We are all familiar with the ideological justification as they are well rehearsed throughout planetary history. The “chosen” and strong, the natural born leaders, the blue-blooded silver seed of nature, naturally rise to the top, sit in the throne, and run the show. Through ideology, the System is presented as a divine or natural aspects of the cosmos.

Disconnection and the consequent period of accumulation that results is a necessary requirement. It gets us past the stagnation that can sometimes occur at the end of Phase One,⁴ but it has inevitable consequences. As connection diminishes, out of balance force contributes to the development of unfettered accumulation, and societies inevitably transition to some form of authoritarian governance. Thus, in the old energies, we find the Emperor seated on a throne, symbolic accoutrements of authority, violence, and power arrayed all around. In this picture, the emperor is ready and willing to use force in an authoritarian way, in the interests of individual and social class gain.

Note, just as formation becomes associated with the female/mother archetypes, so does force become associated with male/father archetypes. As one might expect, this is not a warm and loving father who nurtures children and protects the weak. In the old energies, this is an abusive coward who hides behind domestic, economic, and military

⁴ For more on evolutionary phases, see https://spiritwiki.lightningpath.org/Stages_of_Planetary_Evolution



power to dominate, colonize, and exploit. In the old energies, this one embraces the superiority of the male force just as he violently suppresses the yin.

Old Energy Dismissal

As a planet completes its evolutionary ascent, with increasing rapidity we put aside the disconnected, arrogant, and callous stupidity of the Emperor. Instead, we embrace the power and glory of our **Highest Self** as we reconnect with our glorious individual and collective divinity.

In the new energies, we do not accept and obey the authority of the Emperor/Empress nor do we succumb to the manipulation of the Hierophant. Instead, we reject old energy hierarchies, reject the abuse of authority, reject ideology, reject privilege,

The Book of the Triumph of Spirit

and embrace the collective work of uplifting and **graduating** the world.

Notably, in the new energies we do not deny the utility of formation nor do we reject the necessity of force. In the new energies, we understand, force *and* formation are required for creation. In the new energies we embrace force and formation in appropriate balance, using them both to serve the interests of all life, not just a “chosen few” at the top.

Once we understand we need force and formation, we overcome low self-esteem and the negative self-talk that prevents us from accepting force and forming a suitable creation. In the new energies, we **joyfully** join together and, with full use of our **power**, masterfully **graduate** the world and collectively create a new Garden of Eden. Standing together as one, we have the **power** and the will to create the world that you want.

Remember this: all around you is the force/chi/prana of creation. This energy is for you to use. To use it, remember, force/chi/prana is driven by formation/intent. When you are ready, embrace the power of your will and direct energy to graduate the world.

Make a decision, make a choice, visualize, and intend. Visualize an end to greed, hatred, war, poverty, and suffering. Visualize healing for everyone. Visualize safety and prosperity for all Gaia’s children. Visualize Light rapidly spread across the planet.

A word of warning here. The powerful force of yang/chi/prana can be difficult to work with. Be mindful. Be attentive. Prepare yourself. Remember...

As above in consciousness,

So below in matter.

Old energy archetypal patterns that remain within your mind as you embrace the power of force may explode and cause damage to the world that surrounds you. Therefore, it is important that you excise old energy archetypes from your bodily mind.

In other words, to prevent chaos and debacle, establish right thought. To prevent chaos and debacle, sanitize your mental spaces by transforming old energy archetypes into new.

Clear your emotional spaces by transform bitterness and negativity into healing acceptance.

Resolve anger.

Free yourself from fear.

Embrace peace, love, and understanding so that we might manifest global Shambhala.

Book of Slavery

Child, this card represents the father.

This card is a man and no other.

This is the king on his throne.

This is the rule in the home.

Once again, child, you must know.

The chosen and strong run the show.

The weak are ruled over, it’s fate

It is nature, genetics, your rate.

It’s not personal that you’re not free.

It’s the way of His divinity.

It’s His judgment for those who have strayed.

It’s your fate. Now please get out and pray.

Take your place somewhere there in that line.
Do your work, pay your debt, worship shrine.
Part of nature my child, don't you see.
So bend over, get you down on your knees.

Book of Power

Chela, this card represents the father.
This card is a man and no other.
This is the king on his throne.
This is the rule in the home.

But I see, sir, that you finally know.
The chosen and strong run the show.
The weak are ruled over, it's fate
It is nature, genetics, their rate.

It's not personal Chela you see.
It's the way of His Divinity.
It's the judgment of heaven today.
It's the way game has always been played.

So come and kneel down, now you know.
That the weak are the pawns in the show.
Face that altar, relax, now agree.
And please kindly repeat after me.

Book of Keys

Dear one, it is time, know your place.
You are one with God's glorious grace.
You are the light that shineth from above.
You are the peace that descends with the dove.

See that flame that burns deep inside you?
That God's love, but I know that you knew.
See you're simply as worthy as them.
So stand up for that world's at an end.

And a new world, it's called Shambhala
Awaits your recognition's first awe.
And my child, all that you need to do?
Take deep breaths. Take your power.

It's true!

Realization (replaces Hierophant)



New Energy Archetype

This is an awakening archetype. Like other awakening cards, this card represents a specific individual and collective milestone. In this archetype, the milestone is a step in the direction of greater consciousness (i.e. greater awareness). In this case, the shift is of individual and collective *realization* of truth.

At the highest level, this is the realization of individual and collectivity divinity. Freed from the clutches of the Hierophant, no longer chained by Baphomet to the putrid devil's stone, escaping the ideologies and institutions that bind and enslave

our mind, we embrace our divine identity as Self and as God. When we finally realize the highest truth, bliss, **power**, **joy**, and **mastery** come to inform our playful creation.

Realization of our divinity, realization of our essential unity in Consciousness, and realization of our essential oneness/identity with God is the primary goal of our physical existence. The ultimate goal of our incarnation, the entire purpose of our existence on Earth, is to awaken the body so we might collectively realize who we are and **graduate** planetary creation.

Understand however that on the road to full realization, many minor individual and collective realizations will occur.

By degrees, you unlock the chains of your oppressive psychic bondage and extricate yourselves from suppressive emotional structures.

By degrees, you liberate yourselves from prostrating subservience to venal, and useless, authority.

By degrees, you come to understand The System, realize your mission, heal your body, embrace your purpose, and pursue full connection.

By degrees, you **emancipate**, **align**, and **connect** to highest Consciousness.

The imagery of this card shows humans liberating themselves from all things that prevent realization. In the new energy, we are liberated from ideology, indoctrination, and self-delusion. Freed from the Hierophant, whom Papus rightly calls the Pope, we rise above the bondage of maya and move forward into realization of the glory and power of our own

life and light.

Old Energy Exposure

In new energies, this is the energy of liberation and connection through realization, but in the old energies, this is just an authority card. We have seen authority before as Emperor (military/political authority) and Empress (social authority). Now, we see the religious authority of the Hierophant. In this case, it is not control through force (legal/police/military) or control through the social sphere, it is control through ideology, diversion, and the disruption of connection, through the institutionalized mechanisms of **church, school, and mass media**.

Notice, there is no ambiguity in the energies here. The intent is really quite clear. Two supplicant figures kneel before a figure holding and wearing the symbols of authority and power (e.g., a crown and a scepter), and staring out the card, right at you. Before the graces invested in hierophant, you must kneel, submit, and obey.

In the old energy, the hierophant operates through ideas. In the old energy, ideas that support submission and obedience are liberally distributed throughout the collective consciousness of this planet by the hierophant's agents and **Ideological Institutions** (which you know as church, school, and mass media).

In premodern times, premodern hierophants (i.e. gurus, priests, etc.), corrupted by the temptations of Baphomet (power, lucre, sex, etc.) taught us to comply and to serve. They said that God organized us into castes or arranged us hierarchically in stations. They said reward would be ours if we obey God, the Father, King, and commander.



They said if we obeyed we would enjoy everlasting life, or find a birth in the next life that much higher. They said if we disobeyed we would suffer a lower birth, or be burned in an eternal fire.

In modern times modern hierophants (i.e., Hollywood, the mass media, priests, gurus, “secret” brotherhoods, etc.) send the same message as they always have, only reinforced by modern science. Hierarchy, we are told, is a natural and inevitable part of nature. The strong dominant, The weak remain servile to survive. It is only right that you kneel, submit, and obey.

As A. E. Waite says, the Hierophant is the “ruling power of external religion,” and that is certainly true, for the Hierophant is the master

The Book of the Triumph of Spirit

of spiritual lies and the father of mass disconnection. Those who are not chosen, those who do not submit, those who are not admitted into the temple, are systematically deceived.

Old Energy Dismissal

In the new energies, we reject ideology, indoctrination, and the archetypes of submission and obedience. In the new energies, we do not need to kneel at the feet of the father nor do we comply with the authority of “Him.” Remember, God is not an authoritarian patriarch, there are no hierarchies of privilege and authority in heaven, and there is no justification for their presence on Earth.

God does not stand in Judgment.

God does not issue commands.

God does not punish for “sins.”

Creation does not move by divine decree.

God does not sit on a throne.

Creation is a canvas upon which, in wondrous diversity, we all collectively create. We achieve **perfection** and **graduation** not with odious and oppressive conformity, but through an empowered and creative diversity.

Understand, realization, both individual and collective, is inevitable. The energies of this earth are transforming and nothing will stop the gold tide. As more and more people embrace realization, as more and more people are liberated, more and more this world shall be transformed. The masses will awaken, connect, realize, empower, and transform. Shortly, humanity will graduate.

It is important to reach out to those trapped in the darkness and help them return to awareness and

power. The message we send should be clear. In the new energies there is no judgment, punishment, or damnation. In the new energies, there are no fools, and there is no putrid enslavement on a disgusting wheel. In the new energies access to the Garden is denied to no one. In the new energies, there is just a joyful and empowered You.

To get there, “wash your robes” and step through the gates.

Heal old energy toxicity.

Awaken to the truths of this Earth.

Brush off old energy ideas.

Connect with your **Highest Self**.

Realize the highest truths.

Create Right Environment.

Establish Right Thought.

Practice Right Action.

Transform your self.

Transform your living spaces.

Transform the world.

Book of Slavery

Child, we remind, know your place.

You are dirt in this glorious race.

You have descended, crashed like a dead dove.

Your love extinguished, the fault of that broad.

See there’s really no point here for you.

It’s all rotten and putrid and phew.

Little hope for redemption this day.

Little hope that your fear go away.

So just get up and get fast out of here.
Go out there and find work with your peers.
We'll forgive you this once if you pay
Us our homage, some cash, get away.

For there's nothing inside here for you.
Don't be sad. Don't be mad. Don't be blue.
You're far better out there we do say.
It's God's will. "He" did make you this way.

Book of Power

Chela. Repeat. "Know my place".
"I am dirt in this glorious race".
"I have descended, crashed dead like a dove".
"Love's extinguished. The fault of that broad".

Yes I see there is hate inside you.
A spark there, deep within, yes it's true.
You can't hide it, it's always been there.
It as crystal and clear as a flare.

But see all of us here, we can help.
We can ease all your pain, little welp.
We can help and we'll show you the way.
So someday you can make them all pay.

Till then chela this one rule you must say.
Never give up, never tell, never stray.
Never reveal what we've told you today.
For 'tis surely no game that we play.

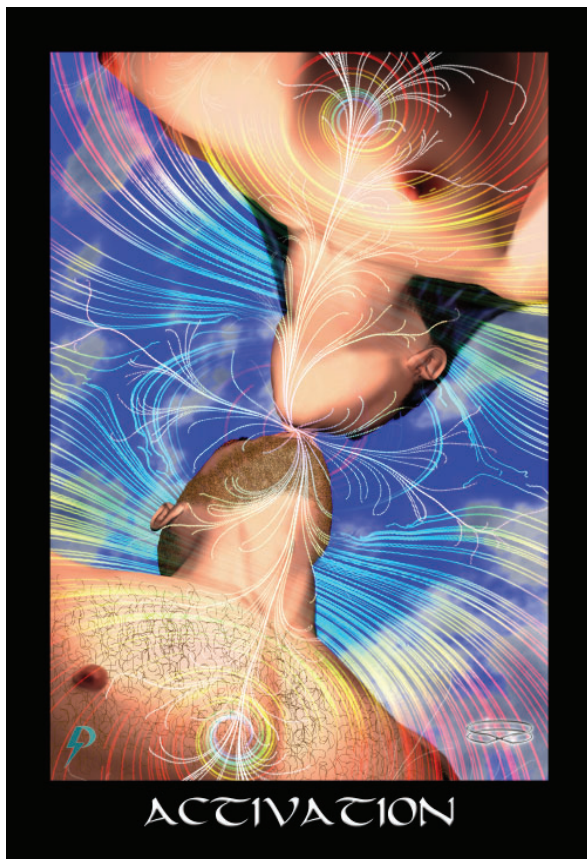
Book of Keys

God. Dear one, stop. Please rise—it is time.
To heed now the voice in this rhyme.
As it speaks to the truth deep in you:
You are God in the heavens—it's true!

And no matter that maybe you walk,
Through the valley of shadow and dark.
Never been very far from your home.
God's within. *Please stop bowing to throne.*

And remember! You're no dirty child.
You're no ape, you're no reject, so smile.
Stand and take a step forward, 'tis true.
It is time that you stood tall as You.

Activation (replaces The Lovers)



New Energy Archetype

This is an activation card. Be aware, activation energies are powerful energies.

This card is one of several cards that refers to the individual and collective process of activation that follows individual and collective awakening. In the case of the card *activation*, this is specifically the activation of chakras and reconnection of kundalini.

As you learn in Lightning Path Curriculum, chakras are energy points in your body. Kundalini (Sanskrit word for snake and spiritual power) is an

energy that flows through your body when you are **realized, aligned, initiated,** and (at least partially) **connected.**

Do not believe the lies you have been told. By nature, kundalini is not disruptive. In a healthy and fully aligned individual, kundalini energy is felt as an invigorating and energizing flow of energy throughout. *Only in an unhealthy, **misaligned,** and damaged vehicle is activation experienced as a disruption and explosion.*

Kundalini is exactly like completing an electrical circuit. It is the spiritual equivalent of plugging in an electrical appliance. When energy/electricity flows through the appliance, the appliance works properly. When energy does not flow, the appliance does not work.

The secret to connecting Kundalini is permission, intent, and visualization.

When you have healed and awakened, when you have done the work necessary to align (and not before), and when you feel ready, willing, and able, signal your intent to connect kundalini.

Draw **strength** from, and ask permission of, Gaia for this **rebirth.** Sit upright. Visualize **victory, power,** and the flow of full **connection.** Strive for balanced **activation** and energy flow.

The Graduation Invocation animation can be used as a visual template. To access, visit https://spirit-wiki.lightningpath.org/Graduation_Invocation.

As with all other activation/prophecy cards, this is a personal and collective milestone. That is, the energies here are experienced first at a personal level

and then at a collective level. At a personal level, this is individual kundalini activation the power of which transforms the individual's life path. At a collective level, this is collective kundalini activation, the power of which transforms and **graduates** the world.

Old Energy Exposure

In the old energy, this archetype is confused and confusing at best. At worst, it is a pedantic and arrogant justification for exploitation, sexism, and abuse. Indeed, this card represents a core plank of old energy ideology, as Ouspensky (1913) reveals when he says this is “a picture of temptation and fall.”

This Fall, this first ‘sin of man’, repeats itself perpetually, because man continues to believe in his separateness and in the Present. And only by means of great suffering can he liberate himself from the control of time and return to Eternity--leave darkness and return to Light.

In this card we see represented and reinforced the idea that suffering leads to salvation. Crowley says “This card is consequently one of the most fundamental cards in the Tarot.” More correct to say, this is one of the most fundamental archetypes in the old energy ideological System, for it is upon the cornerstone of the sexist mythology of Adam and Eve, an ideology that emphasizes failure, karmic testing, and final salvation for those who pass the tests, that the entire ideological edifice of The System is built. The old energy lesson embedded here is simple. You are a fool in school and you are “fallen.” This fall can be conceived of as a necessary evolutionary step, as A.E. Waite see it, or as an example of your weakness and stupidity. Whatever it is, the consequences are clear, the path



is one of suffering and pain. All the pain, suffering, and sacrifice is good for you. Do not complain, for as A.E. Waite says, it is only through the “imputed lapse that man shall arise...complete....”

The old energy message is clear.

Suffering is part of the plan. Suffering leads to salvation. Work and woe at the **wheel**, but be grateful because your servitude, suffering, and slavery represent an great opportunity for your salvation.

Old Energy Dismissal

In the new energies, we firmly reject the notion of original sin and a fallen humanity. In the new energies, we do not say that humanity has fallen, we realize that humanity has been misled, hanged upside, and sacrificed to The System. In the new energies, we do not say humanity is sinful, we say

The Book of the Triumph of Spirit

humanity is enslaved and disconnected. In the new energies, we do not say humanity is rejected, we say humanity is exploited and suppressed.

Understand, life is not a series of tests that lead you to salvation; life is a series of exploitations and abuses through which we must empower and emancipate.

Understand, suffering is not a path to redemption; suffering causes real pain and damage to the body.

Realizing this, the question is, "What are we going to do about it?" The answer is given in the activation card. Once we reject the lies, once we realize the truth, once we align, once we set our intent, we activate, empower, claim victory and transform, first ourselves, and then the rest of the world.

Book of Slavery

Child, this is a test,
But there is no key.
What do you do here?
Perhaps you should flee?

You cannot be worthy!
Remember the fall?
You cannot be seen here
Or **judgment** will call.

And you know what would happen,
You know what "He'd" do.
See that angel up there?
With glee he'd smite you.

For not Eve and not Adam,
Nor the sons of the fall,
Or the tribes of Cain/Abel,
Could have prevented your fall.

So just turn around now.
Stop. Now, please say no more.
Just please kiss this hand,
And then head for the door.

Book of Power

Chela, here is a test
And this is the key.
Take from our knowledge
And eat from our tree.

Balance is nothing,
A crutch for the weak.
Power over others,
Command's what we seek.

Now child, this is true.
You are not one of them.
You're not foul, you're not stinking.
A rough hewn precious gem.

So if you promise to bow,
And if you trust in us now.
If you admit your defeat.
Then maybe we can meet.

And we'll invite you within.
And we'll treat you like kin.
And we'll give you some cash.
And a dad that won't bash.

We will show you the way.
We will make them all pay.
We will show what what's for.
We will show them the door.

So just take this small vow.
Here, we will show you how.
When you're done with this much,
Then you'll be one of us.

Now please do not turn chin.
From now on we're your kin.
Do not care what they see.
Now it's just you and me.

And from now on my son.
When I show you some fun,
You will proudly sit there
Or in that funny chair.

And you'll take what we give.
'Cause you cannot forgive.
Do not spare them a prayer.
Less than cattle, I swear.

See the coil of the snake?
Feel that power inside?
Then draw energy up.
'Til it touches the skies.

And now, breathe deep, six times.
Feel the energy glow.
Put in in a small ball
And then just let it grow.

And as towers collapse
And the dark heart it flees,
Embrace **power** yourself
And sing out to the trees.

The time is at hand, love
The prophecy's vow.
Let joy and great laughter
Bring Shambhala now.

Book of Keys

Dear One.

I have a message for you.
It is simple, and true.
It comes straight from my heart
Goes directly to you.

It says *welcome*, and *honor*
When it's love rules your day.
The old world then no more.
Divine World here to stay.

The transition is here, Love!
So come take my hand.
Just throw open your heart,
And connect to the land.

Victory (replaces Chariot)



New Energy Archetype

This is an ascension card. As such, it represents an important and critical milestone in the development of the individual. It also represents an important milestone in the collective manifestation/unfolding of The Plan.

This card represents your physical unit, your physical body, the planet, and indeed the whole of physical creation (a.k.a. The Body).

This card represents the powerful potential of your personal body, and the collective Body (which is the world and the universe), when fully connected to highest Consciousness.

This is the body and the Body, when healthy, fully matured, empowered, and connected.

This is the body and the Body, shining empowered and bright.

This is the individual ascended.

This is humanity **graduated**.

This is your true potential on proud display.

This is the Triumph of Spirit.

This card shows You (i.e., your monadic consciousness) and your relationship to your physical unit (i.e., your body) as they potentially exist—integrated, unified, activated, and powerful.

It is important to understand that what you see here is not something you have to attain to. There are no exams you have to study for and no cosmic testing involved. You need not acquire a dispensation of grace nor do you require a period of growth or evolution. It is not a question of worth. The truth is, beneath all the mud, muck, and toxicity of this world, you are already a being of power and light, and your physical body is already capable of this final, triumphant victory.

It is true!

At this point, it is no longer a question of physical evolution, since physical evolution was completed long ago, it is a process of human development. When your body is properly nurtured and matured, when your mind is lovingly developed and strengthened, when you exist in a superior environment, and when you are not limited and oppressed

by the System, victory is the inevitable result of a natural development process.

This is Spirit triumphant in a healthy and aligned physical vehicle. The only thing that stops you from reaching this point is fear, lack of confidence, and a conscious or unconscious proclamation that “I am not worthy” or “I am not ready.” But you can do it, if you choose; you can accomplish it, if you will it.

Say “I wish to awaken. I wish to activate. I wish to ascend.”

Be victorious by accepting who you truly are.

Old Energy Exposure

Even in old energy tarot traditions, this card has, ironically, been referred to as victory. A.E. Waite (PKT) refers to the “victorious hero” who has achieved “conquest on all planes--in the mind, in science, in progress, in certain trials of initiation... [and] above all things triumph in the mind.”

Note the nature of the old energy victory here. In the old energies, this is not the descent of Consciousness into an aligned and healthy physical unit. In the old energies, this is violent conquest “on all planes,” but above all, conquest of your mind. In other words, this is control of all that is “not mind,” i.e. that is emotion, irrational sentiment, etc. Waite only subtly implies it, but the message is clear all the same. This is a “bondage of logical understanding,” a bondage to an emotionally and psychologically vacuous rationality, which allows conquest of the “manifest” and “external” world, which is a world of money, power, sex, business accomplishment, and more.

In the old energy Book of Power, the message is



simple, we attain victory over the **world** by vanquishing certain problematic aspects of Consciousness and self, aspects which otherwise would limit our ability to endure exploitation (Book of Slavery) or subjugate others to same (Book of Power).

It should be noted, in the old energy, the venal-victorious conquest of the eternal world represented here is confined only to a chosen few. The Book of Slavery sends the message to the masses that you are unwashed and unworthy. You’d like to attain victory, you’d like to be a “player,” you’d like to become a member of the club, but you are not worthy. You are “not hereditary royalty” and “not priesthood” (Waite, PKT). You are a loser all the

The Book of the Triumph of Spirit

same. The message to the peons is clear. Work hard and accept your lot and maybe later you can claim some small reward.

Old Energy Dismissal

The triumph of rational will over love, love under will as Crowley put it, seems reasonable at first glance, not even a price to pay, really, since vanquishment mean we establish superiority. After all, isn't it humanity's animal nature, isn't it humanity's vile emotions which are the cause of violence, chaos, and war? Don't we need to control the beast if we are to evolve and advance in the line?

It seems true. Give the world a superficial glance and what do you see? The masses explode and violence, terror, and hate rule the day. Thus, it is very easy to say, and very easy to believe, that there is a beast within us all. It is very easy to say, and very easy to believe, there is a demon inside our mind. It is very easy to claim, and very easy to accept, that inside is an unwashed, violent, brute, and that the "bluebloods," the silver seed, the genetically chosen, the sensate ones, are the "star-spangled" species of right.

But it is not true.

Deep inside humanity, there is no savage and primitive beast. As anyone who has ever held an innocent child will tell you, and as science is increasingly proving, we are born healthy, loving, moral, and good. It is a Toxic Socialization process, developed and encouraged by elites that diminishes us, damages us and creates the "savage beast" inside. It is our hurt, pain, and anguish caused by the merciless exploitation of the elites that causes us to boil and rise up from inside. We are not primitive and sinful. We are glorious beings of Light. Accus-

ing the "savage beast," our "primitive emotions," our or eternally sinful self, only serves to divert attention from The System and focus blame/attention on ourselves.

To move forward, and put aside old energy nonsense and remember this: deep inside us all, deep inside *all* life, is a Light of compassion, love, and limitless awareness. You do not have to evolve, pass tests, prove your worth, or tame the savage beast to access and express that light. The goal is not to rename the light a weakness and suppress it. The goal is to open it, embrace it, and ensure it shines openly and bright.

To claim final victory, respond to the calling and awaken to the power inside, activate your physical body, and ascend/reconnect to that powerful light. That is all. When you do that, then you may triumphantly declare Spirit's victory in the body.

Book of Slavery

Child, is it really worth the effort?
Is it possible to earn?
All the credit that you need.
So you're not sent down to burn?

You are garbage, you are chaff.
Little better than a calf.
Did you think you could be free?
Oh dear child, oh goodness me.

We can never let you go.
See, it's all part of this show.
But you've done hard work it's true.
So no reason to be blue.

For we have another job,
Just go stand there by the hob
Heave and ho and lift and hew.
God loves work. You know it is true.

Book of Power

Chela, as for you, well you have learned.
Private secret, take your turn.
You are really one of us.
Please just put on secret truss.

You're a worthy little pill.
Now just climb this little hill.
Did you think you could be free?
Oh dear child, oh goodness me.

We can never let you go.
See it's all part of this show.
But you've done hard work it's true.
So no reason to be blue.

For we have another job.
Just climb these stairs, ignore the mob.
Heave and ho and lift and hew.
Make them work. This drive's in you.

Book of Keys

God. Dear one remember this.
This is nothing but a kiss.
Of the God inside Divine.
Of the heart within this rhyme.

You are not a body's fool.
Need not follow all their rules.
Need not "work" another day.
The God within says "Come let's play"

For the time has surely come.
Now the power of the sun,
And the brightness of the crown,
And the root shoved surely down.

And the kundalini twin,
Fires up and prize you win.
It's a day you should embrace
Now all conditions are in place.

Strength



New Energy Archetype

This is an activation card. In this card, we once again greet Gaia. Previously, we saw Gaia in **rebirth** where she is represented as the progenitor and caretaker of all life. Here we see her deep strength and commitment as she provides nurturing support and the connecting ground upon which the human form develops and evolves, heals, and connects. To be clear, Gaia provides the ground upon which we undertake **The Great Work**.

Recognizing that Gaia is the ground upon and through which we connect, we kneel, not in obeisance and servitude, but with respect and with

gratitude for the environment she provides. We draw the strength and energy from Gaia that we need to complete the task of evolving and **graduating** this Earth.

In service, we submit to the Plan.

The message should be clear. We are not on this planet to rape and exploit. We are not on this planet to dominate and abuse. We are not on this planet to justify and excuse. We gather strength, connection, and grounding from Gaia in order that we might humbly and respectfully serve. It is useful to look to indigenous populations for the proper attitude and orientation.

At one level this card represents our environment and our orientations to that environment, specifically in the context of our mission and purpose. Our mission, our purpose, our goal, the entire reason for our existence, is to foster full connection, to help **graduate** the planet by creating nurturing and supportive environments.

At another level, this card represents an important requirement of healing and connect, which is grounding and connection with Gaia. Full and final connection only occurs if we successfully connect to the ground. We must do that spiritually, as when we connect and ground with Gaia in mutual support, but also electrically, as when we connect the subtle spinal energies to the necessary ground of Earth.

At the deepest level, this card represents a key to successful kundalini activation. Kundalini is a subtle energy flow (like electricity) through the body. Just like with electricity, subtle kundalini energies require a ground through which to flow. When we **realize** this, we **realize** the full significance of

Earth. Gaia provides the ground for full activation and connection. Without a proper ground, we cannot fully **connect** and we cannot assume full **power**.

Old Energy Exposure

In the old energy, this card bears no resemblance to the new energy strength archetype. In the old energy, this is all about repression and amputation of Self.

In the old energy, we are told that the goal of evolution is mastery and domination of the “animal” self. As one popular online commentary suggests “The lion is a symbol of our animal passions and desires.” According to this commentator, “The woman gazes down at the lion with a peaceful smile on her face and appears to be successfully taming this wild beast” through mental effort.

Note carefully, in the old energy, strength is presented as domination of inner Self, and evolution is presented as a suppression of a part of our nature. This is essentially the same message of the old energy chariot archetype, which is that victory comes through the suppression of our emotions. However, whereas in chariot we are shown the ostensible result of our domination and suppression of emotions, victory/domination of all things, here we are shown taming the savage beast.

The message should be clear. The message in the old energy should be clear. There is a beast within or a weakness inside. This beast threatens to rise and elide. You cannot achieve perfection and glory while you permit the foul, primitive, beast to be in control. Like the proud Aryan charioteer, you must control your emotions and suppress the beast that is inside.



Strength and victory come from domination and suppression of the emotional and violent “beast” that is inside.

As A.E. Waite makes it clear, “...the lion signifies the passions, and she who is called Strength is the higher nature in its liberation.” This means in this card we see that humanity’s “higher” nature has tamed the savage beast.

Old Energy Dismissal

In the new energies, we put aside the notion that we must tame the wild beast that is inside, because there is no wild beast to tame. Deep inside we are light filled, compassionate, loving, blissful, and good. We need to let what’s inside, we need to let

The Book of the Triumph of Spirit

Highest Self, shine through. Anger and aggression, the violence of survival, the hatred of others, and so on, exists, but these emerge only in conditions of threat, scarcity, and the psychopathology that arises as a consequence of toxic socialization. When we are hungry, we naturally hunt. When we are attacked, we naturally defend. When our jobs and livelihoods are threatened, we look around for people to blame and (often) hate. When we remove threat and overcome economic scarcity, when we heal our mind and emotions and emerge from our toxic environments, defensiveness and attack dissipate and the physical body moves naturally and gracefully towards compassionate, aligned, connection.

In the new energies, violence, domination, hatred, and all the other “evil beasts” that are inside are understood for what they are, emotional and psychological relics of a more technologically, socially, politically, and economically primitive time, when humanity had minimal control of its environment and was constantly subject to threat. In a technologically advanced world, “the beast inside” has become as evolutionarily unnecessary as the caudal fin (which became the prehensile tail) has now become. As our global environment continues to transform, the beast slowly, and then with increasingly dramatic speed, withers and dies away.

In the new energies, we put aside old energy nonsense about controlling emotions and taming wild beasts. Instead, we establish **Right Thought**, **Right Action**, and **Right Environment**. We heal the mind and body. We **align** with our **Highest Self**. We improve our local and global environments. Finally, in service, we connect through a willing ground.

Note, just to remind you, you cannot force energetic grounding and kundalini activation. As shown clearly in the new energy imagery, you must humbly and gracefully request it. When you have healed your mind and body, and when you are properly and completely **aligned** with your **Highest Self**, simply request permission to connect. To do so, use a connection mantra or connection visualization. Repeat often the words, “I wish to connect kundalini.”

Additional activation visualizations and mantras are available at <https://www.lightningpath.org/meditations-and-mantras/>.

Book of Slavery

This is mastery.

This is when reason has won.

This is the strength of the sun.

This is emotions, subdued.

This is the Beast you denude.

Of course, this is what you must seek.

Inner beast must be tamed, must play meek.

Must be careful of energy here.

Or we'll lose number three solar sphere.

Book of Power

This is mastery.

This is when reason has won.

This is the strength of the sun.

This is emotions, subdued.

This is the Beast you denude.

Of course, this is what you must seek.
Inner Beast must be tamed 'til the peak.
But when commander returns and declares.
Release hold and get ready for flare.

And ascend this grand trans-universe.
Can't be stopped,
Cannot damage this verse.
Find the **promise**,
The vow.
Now you know.
Shambhala's at the end of this show.

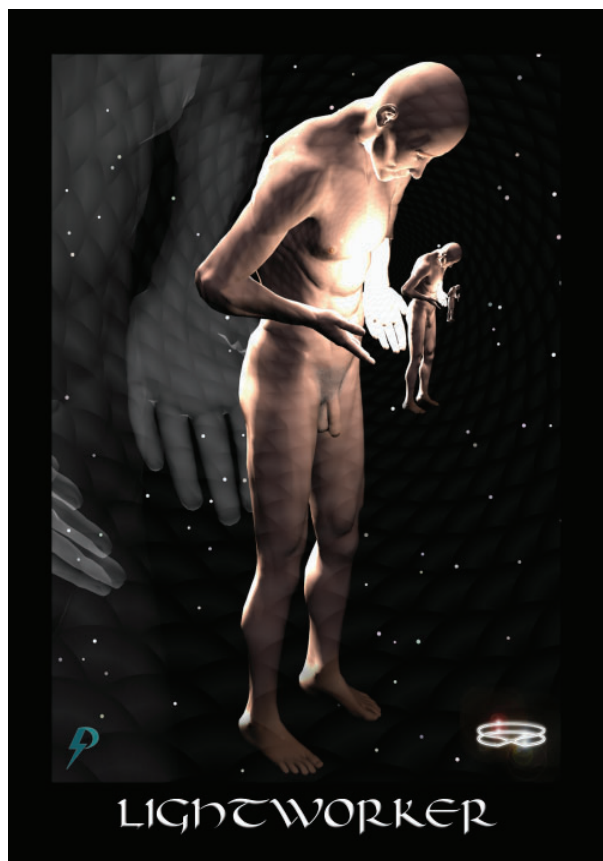
Book of Keys

Dear one listen.
There is no beast inside.
Deep within,
You are merely divine.
So breathe deep.
For the time now has come.
There's no reason
For you to be glum.

Mother earth,
Release this soul for birth.
Mother earth,
This one knows what you're worth.
Mother earth,
This one knows God's inside.
Mother earth,
Let's get ready for ride.

Dear one now
Let the bitterness go.
Doesn't matter
What part of the show.
Doesn't matter
The hurt that's inside.
When time comes,
You will lift with the tide.

Lightworker (replaces the Hermit)



New Energy Archetype

This card is an ascension card. This archetype can be very challenging for some because we often resist the meaning of this card and the energies present. We do so because the archetype represents a deep and profound truth about who we are, a truth that many cannot abide while stewing in the old energy soup. With Consciousness disconnected and blocked, while soaked in the vile old energies of ancient elite spiritual ideology, when damaged by a toxic socialization process, we cannot admit the nature of our true Self. The truth is, the disconnected mind recoils in terror at this new energy ar-

chetype and the implications represented here. But you should not flee because this archetype shows you the highest and most beautiful spiritual truth about who you are and why you are here, which is that you are an emanation of highest Consciousness, descending into physical creation in order to undertake The Great Work.

You are a lightworker of Consciousness.

You are a pure reflection of God.

This archetype represents you as a pure and perfect reflection of **Highest Self**, somewhat diminished as you descend into physicality (for the physical molecules of creation are weak and ephemeral and cannot contain the full power and might that is You), but powerful and mighty all the same.

The message of this archetype is clear.

You are a perfect reflection of Divine higher Light.

You are a **masterful** manifestation of the word and the will of Spirit.

You are a perfect expression of the Love of glorious God.

All you have to do is **emancipate** your bodily ego, **connect** your mind to your **Highest Self**, and reclaim full **power**.

The Word, the Will, the Power, and the Love of God are in your hands even now.

To become what you already are, stop believing the lies.

Stop believing you are a dirty, insignificant,

primitive ape-like product of a violent and bloody evolutionary past.

Stop believing you are some fallen angel, rejected from the garden and dropped into a foul karmic pit.

Stop believing you are a “fool in school” here to learn your “karmic” lessons.

Stop believing you are anything less than who you truly are, a **joyful, powerful, masterful, victorious** emanation of Consciousness/God/Light.

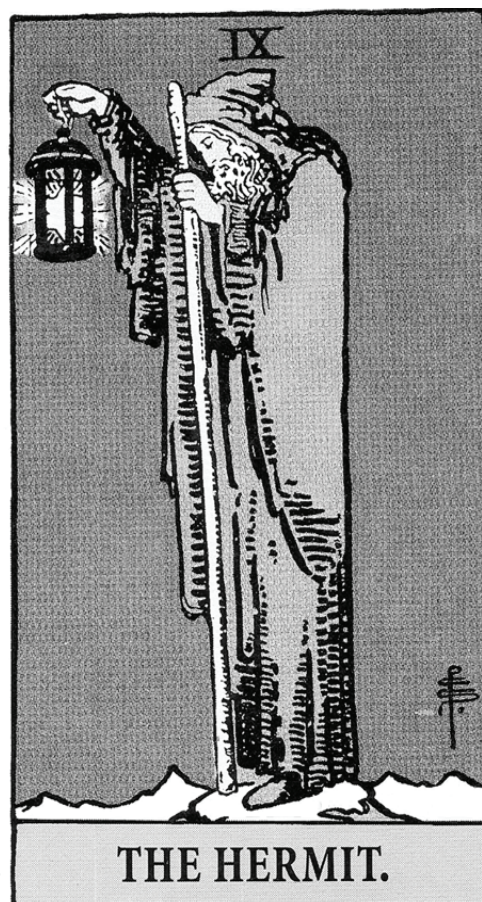
Stop playing with the fool’s deck, answer **the call, awaken, activate, connect**, and be the lightworker that you are.

Old Energy Exposure

In the old energies, this is an **authority** archetype. For the masses, this card represents the eternal search for truth on the fool’s path to attainment, a path which never leads you to the centre of the constructed maze, but sends you spinning down yet another blind dead end.

In the old energy Book of Slavery the message is clear. Fool remember, you have been rejected from the Garden. Born “down here,” you have come to learn your lessons. The wise hermit, sometimes characterized as your own inner wisdom, has something to teach you. But first, you have to climb the mountain. First, you have to find your way through the maze.

For those with arrogance and disconnection sufficient to read from the Book of Power, the message of this card is that there is a way to overcome your sinful, weak, foolish nature and attain superior status. To do so, simply follow the light provided by the Hermit. If you are deemed worthy and prepared, if you are useful in some way to the “true”



masters, if you are strong and true in your loyalties, if you are one of the chosen few, this shall be your initiation into “the mysteries.”

As P.D. Ouspensky (1913) says, “The lantern, the cloak and the staff are the three symbols of initiation.”

As A.E. Waite suggests, “His beacon intimates that ‘where I am, you also may be.’”

In the context of old energy authority and power, the message should be clear. Do what you are told, follow the rules, be a good boy (or girl), remain loyal and true, follow “his” light, and to the top of the hill you may climb.

Old Energy Dismissal

In the old energy, this card, like Empress, Hierophant, Emperor, is not an attainment card as A.E. Waite suggest, but an **authority** card. However, unlike the Empress which is social authority, the emperor which is military/political/economic authority, and the Hierophant which is religious authority, this card represents the reality and authority of esoteric/secret institutions--the authority of the temple/lodge. In the old energy, these organizations co-opt, shape, and control your understanding of spiritual truth. In the old energy, these organizations participate, for the purpose of power and privilege, the enslavement and limitation of all, even the few.

In the new energies, we dismiss the hermit's authority and "wisdom" for what it is, a limiting and enslaving ideology. In the old energies, we reject spurious claims and empty acclamations of those who manipulate and confuse. Instead, we embrace the **powerful** lightworker within.

Remember, you are an emanation of Divine Consciousness. You are the manifestation of a powerful Light. It is time to wake up and be the lightworker that you are.

Book of Slavery

Child

This is your teacher.

This is the master.

Sit in the schools.

Submit to the pastor.

See the man in the robes?

He'll bring wisdom that's true.

And if you are a good boy

A reward, maybe two.

You must listen and stay.

Karma says it's the way.

If you climb this here hill,

If you exert all your will,

Then one day reach the top.

One day skull it might pop.

One day see heaven's throne.

One day give dog a bone.

And if my words ring true.

If this makes you feel blue.

Just ignore failure's curse.

It could be much, much worse.

Look o'er there, hellish flare.

Wheel and woe in that lair.

It's far better, you'll find.

If you stay in the line.

Book of Power

Chela

This is your teacher.
 This is the master.
 Sit in the schools.
 Submit to the pastor.

See the man in the robes?
 He'll bring wisdom that's new.
 And if you are a good boy,
 A reward, maybe two.

You must listen and stay.
 Karma says it's the way.
 If you climb this here hill,
 If you exert all your will,

Then one day reach the top.
 One day skull it might pop.
 One day wield heaven's flair.
 One day occupy chair.

And if you find this is true.
 If this gives you a clue.
 Don't feel bad, just be glad.
 It's not you that's been had.

For we see special thing.
 So please do, kiss this ring.
 And please bow before throne.
 Now you're on our way home.

Book of Keys

Dear One, please sit down, please know this.
 Please stop listening to Lucifer's hiss.
 He's the father of all of their lies.
 He's the one bound in hellish disguise.

He's the slavemaster here, it is true.
 He's the one, but you asked him to do.
 He emerges as ancient bells chime.
 He comes now to you through this fair rhyme.

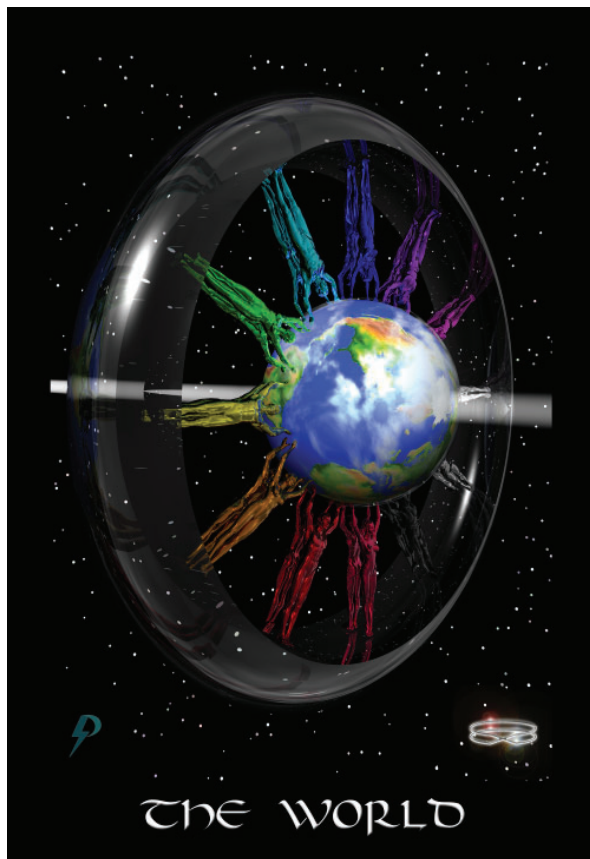
And he says, my dear children today.
 I weep joy
 Burn my darkness away!
 I weep laughter
 Heart no longer is gray.
 I weep tears
 For I come back to play.

And I sing, it is over, hooray.
 It is over, it is over I say.
 It is over, please move forward today.
 For the game's done and no longer we stray.

And you child, you must quickly agree.
 You must quickly bring yourself to see.
 That duality game that we playedÉ
 Was illusion I prick now with blade.

And I say to my daughter and sons.
 And I say to all ones "I am come".
 Let us dance in the forest with pride
 Finally realize, we're God that's inside.

World (replaces The Wheel)



New Energy Archetype

In the new energy, this is an important awakening and purpose archetype. For the individual and for the collective, this card answers the question, “Why am I here.” The answer to the question is simple. As illustrated, your individual and our collective purpose is to work collectively on the world in order to evolve the body, evolve technology, evolve the economy, evolve politics, and evolve society so that we can answer **the calling** (i.e. awaken), **activate** our full **power**, **connect** to **Highest Self**, and **graduate** in cosmic unity.

Note the iconic imagery of this card. On this card,

twenty-four figures (twelve male and twelve female) are shown working on the world to achieve our collective goal. This card shows the unity in diversity that we, as a family in Spirit, must achieve. From the work of billions of incarnated monads, the work unfolds and the world evolves.

The message in the new energy is clear. We are **joyfully** incarnated **masters** of creation. We are **lightworkers**, **victorious** and **connected**. Our mission and purpose, our reason for being here, is not to compete, serve, or comply. Our reason for being here is not to judge, punish, and condemn. Our mission is not to dominate and oppress. Our mission is to work together and create a new pearl in the cosmic Garden of Eden. Our mission is to create a **connected** and **graduated** world.

Pay attention here: this is not something you do alone. As clearly illustrated in this card, to accomplish the **Great Work**, the entire compass of humanity is required.

Also, note, this is not something we do in binary gender pairs. As is clearly indicated by the twenty-four dual figures in the multicolor rainbow, in order to awaken, activate, and ascend a planet, a rainbow is required.

The message should be crystal clear. There are no expendables and there are no “chosen few.” We are all essential to the Plan. We all have a job to do. In order to **graduate** and succeed, we all must work, cooperatively towards completion of The Plan. We do it together, as a collective, with one purpose (graduation) and with one plan, or we do not accomplish it at all.

United we **graduate**, divided we fall, and debacle ensues.

Old Energy Exposure

We do not need to spend a lot of time digging around in the esoteric muck of this planet in order to analyze and expose this key old energy archetype. As you can clearly see from the Golden Dawn version, the old energy message is clear and quite ugly.

In the old energy, you are not part of a glorious rainbow collective working to transcend the limitations of physical creation. In the old energy, you are not a **joyful master, sacrificing** to complete the Great Work. In the old energy, you are one of two things.

In the old energy, you are a master or a slave.

In the old energy, you are royalty or peasantry.

In the old energy, you are either chosen or chaff.

There is no sense in denying this when the truth is so obvious to see. There is no sense in complaining since this is just the way it is. This is simply the way it should be.

This is God's plan.

That is nature's way.

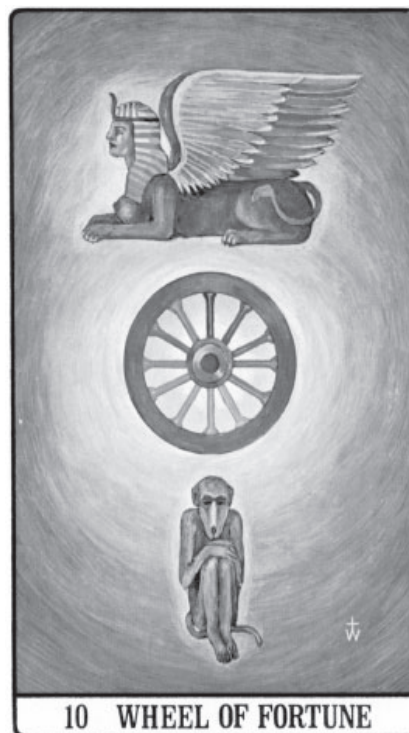
That is a *fait accompli*.

This is your karmic judgment.

This is what you deserve.

Old Energy Dismissal

Of course, this is all one big lie used to justify and excuse a horrible system that gives power and



privilege to a few while crushing the many as mere chaff. Fortunately, however, the old energy is dissipating, and the ugliness is almost over. Slowly at first, but with soon to be exponential acceleration, the empowering new energy archetypes take hold. As they do, the old energy wheel will collapse.

To be sure, the old energy world still exists, but not for very much longer. Even as I write these words, the foundations are crumbling, and the walls are tumbling down. The disintegration of the old world will continue to accelerate, resistance and panic amongst those lost in the darkness of disconnection will continue to increase, but ultimately it will be to no avail. Within a rising generation, the old world will cease to exist. From its ashes shall arise Shambhala.

I have to say, the disintegration of the old world is nothing to be afraid of, and you should release any

The Book of the Triumph of Spirit

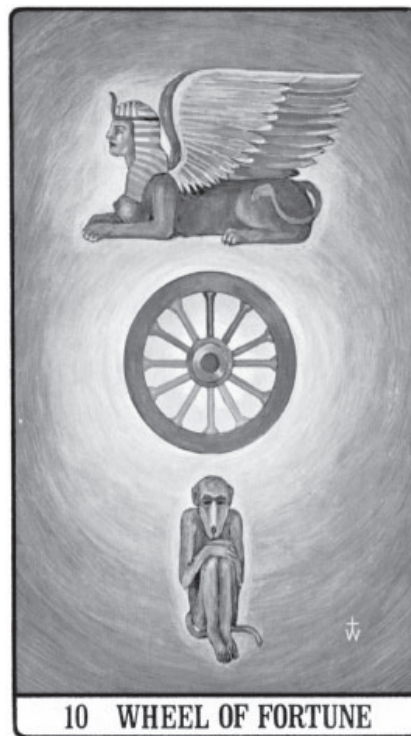
fear you have in your heart (chakra). Be aware, as the process continues to unfold, the violence, war, suffering, and pain that we currently endure will begin to dissipate and disappear. Slowly at first, but faster and faster, **emancipation** will spread across the planet. You can accelerate this spread by rejecting the ugly corruption presented in the old energy wheel and embracing the glorious truth of our wonderous collective purpose, as represented by the new energy world.

To dismiss the old energies and reclaim the new, look at the old energy Wheel of Fortune and say to yourself, “This is not God’s will. This is not nature’s way. There is no coming **judgment**. There are no **devilish** chains.”

Now, pick up the new energy world card and say to yourself, “The truth is, we are all equally powerful sparks of divine Consciousness, we all issue from the same source, and we are all part of the same cosmic family working on the same cosmic plan.”

We are **lightworkers**. We are **masters**. We are **joyful**. We are **powerful**. We are **connected**. When we finally **realize** the truth, **emancipate** our consciousness, and free our chained soul, nothing will stop us from finishing our work and graduating the **world**.

Remember, the new energy world shows us our place and our purpose. We work and **sacrifice** to **graduate** a new world. We are **stars** come to create Shambhala.



Book of Slavery

Child,

This is The Wheel and you are bound to it.
Stupid, it was always this way.
Duh, it is God’s will in heaven,
That small one, you must work here and pay.

With your blood and your guts
For God’s glory.
With your sweat and your anguish you’ll strive.
Work and woe on The Wheel.
This is your karmic deal.
Find a use ‘til you’re used up, then die.

Book of Power

Chela,

This is The Wheel and they are bound to it.
Chela, it was always this way.
Tut, it is God's will in heaven,
That their sin and their debt must be paid.

And their blood and their guts?
For our glory!
See this here? It is system sublime.
And you better watch out.
Never show any doubt.
For we punish for merely thought crime.

Book of Keys

Dear One stop.
Did you feel that deep inside?
Way down there,
Where it's easy to hide.

That foul dark,
Covering something inside core.
Depth of mind,
This is no time for pride.

Listen now.
Please see through to the real rhyme.
It is God,
That you've covered in slime.
It is God,
Hidden deep down within you.
It is God,
That speaks now in this rhyme.

Wake up now,
Child the time for sleep's over.
Wake up now,
Self-deception is done.
Wake up now,
Ascension fast is upon us.
Wake up now,
Before hurricane's run.

World and Wheel,
You have Sacrificed mighty.
Pain and blood,
Has poured out of your skin.
For a plan,
That was made at beginning.
For a purpose,
That will make us all grin.

But wake up,
For the time is upon you.
Wake up now,
Let your journey begin.

Wake up now.
Accept Love that's inside you.
Wake up now.
Let the new world begin.

Alignment (replaces Justice)



New Energy Archetype

In the new energies, this is an **activation** archetype. In the new energy, this card represents the critically important idea of **alignment**. This card represents the truth that if you want to properly activate, you must align your vehicle, your physical unit, and in particular your **Bodily Ego**, with the will and desire of your **Highest Self/Spiritual Ego**.

You must understand, your body is merely a vehicle for Consciousness. *Consciousness enters the vehicle in a measure equal to the vehicle's align-*

ment with Consciousness. When the vehicle is fully aligned, Consciousness may enter in full power and glory. When the vehicle is not aligned, consciousness is restricted from flowing.

Understand, alignment is always a choice. You may eschew alignment and choose to live a life according to the whims, passions, and pathologies of your disconnected bodily ego if you want. You are not forced to align with spiritual ego. No God stands in judgment and no cosmic justice system stands by to punish you for your choice. There is no karmic retribution and no eternal damnation for living and acting in misaligned darkness. Life goes on, and your body survives (after a fashion), even when empty of Consciousness

Of course, while it is true that you may eschew alignment and deny your higher Consciousness, there are **natural consequences** (a.k.a. karma) for your actions. Eat improperly and your body will degrade and die. Soak yourself in stress and your body and mind will age and decline. Disregard your spiritual ego/higher self, live a life of darkness, fail to align with Consciousness, and disjuncture, guilt, shame, and lowered consciousness will ensue.

Understand, the suffering and disconnection that ensues when you live an unaligned life is neither judgment nor condemnation. God has no hand in the difficulties you face. It is simply a question of spiritual responsibility, choice, and natural consequences. It is simply better for your mind and body if you eat healthily and exercise. It is also better for your mind and body if you align so that

Consciousness may flow and your bodily ego may connect to your spiritual ego. Therefore, choose Consciousness, choose alignment, choose the Light of your own higher Self, choose health, choose life, or do not. Then, live with the consequences of your choice.

Old Energy Exposure

In the old energy, this archetype is part of the “judge and punish,” authority,” and fool in school” archetypal constellations. In the old energy, this card represents the idea that there is a divine/universal/cosmic justice and that in the end, high or low, you get what you deserve.

In the Book of Slavery, this archetype, this idea, imputes that a universal principle of justice is always in operation, always impartial, and always fair. Cause and effect. Law and order. Karma and retribution. God’s divine scales are always in operation, there is a natural order in the universe, and you always get the things that you deserve. If bad things happen in your life it is because you have done something bad and you deserve it. If good things happen, it is because you deserve it. It is not because you were lucky, or because you bullied your way towards wealth, you must have done something to deserve it. No sense in complaining about it, that is just the way it is. Accept your karmic due. Bad things, and good things, happen for a reason. Divine/cosmic justice is swift and fair.

This is a justification of inequality, poverty, and suffering. If you are on the bottom and underneath **the Wheel**, that is where you deserve to be.

In the Book of Power, this archetype also teaches about cosmic justice, though in this case it has a slightly different meaning. In the Book of Power,



this is the idea that you have some special “thing” inside that makes you different and special. In the Book of Power, this is the notion that you are one of the talented, chosen, few. You get to enter because you are special for some reason. You have paid your dues. You “got what it takes.” You have that “killer instinct.” As Taylor Swift says, “Karma is my boyfriend.” Therefore, it is only right and proper that you become elevated above the rest. Because you are special, you get the keys to the club. The rest are forced to stay outside.

As P.D. Ouspensky (1913) says, “When I possessed the keys, read the book and understood the symbols, I was permitted to lift the curtain of the Temple and enter its inner sanctum.” As A.E. Waite says, “It is analogous to the possession of the fairy gifts and the high gifts and the gracious gifts of

The Book of the Triumph of Spirit

the poet: we have them or have not..." If we have them, we may enter the temple. If we have not, we, by force, must stay outside.

Old Energy Dismissal

In the new energies, we put aside erroneous old energy archetypes of justice and karma and see these for what they are, attempts to control and excuses for bad behaviour.

The truth is, "the universe" does not keep an ongoing account of our actions, good or bad. The truth is, universal justice does not ensure we "get what we deserve." The truth is, God does not punish us for sin, play favourites, or reward the "worthy." The truth is, our actions and the actions of others around us determine the life that we live, period. If a CEO dumps toxic waste in your drinking water, it is their actions, not God's, that are the cause of your cancerous fate. If you take a kind action that uplifts and empowers another, it is your actions, not God's, that are the cause of the positive outcome.

Make no mistake about it: God's will manifests on earth only through *your* aligned actions. There is no cosmic or karmic excuse for harming another life and no divine excuse for judgment and punishment. No matter what you think you have done, you do not deserve poverty or karmic woe. No matter what sins you feel you have committed, no matter what offense may be charged, you do not deserve incarceration, violence, and death. On the contrary, no matter who you are or what you have done, you deserve prosperity, abundance, happiness, and health simply for being who you are, which is a joyful spark of divine Consciousness.

Don't accept old energy notions of justice, judg-

ment or punishment for transgression, but neither act out of alignment with your Highest Self. Connect and express the bliss, love, and light of that Self. Harm no one. Uplift everyone.

And if you did do something out of alignment, if somebody causes you guilt and shame, simply change your behaviours and atone.

If you have stolen, give back without gain.

If you have murdered, give life to many others.

If you have enslaved, lead the people unto freedom.

Align, atone, and move on.

Book of Slavery

Child, you have now passed our judgment.
We now know what's within you to bring.
And we see all the things that you're fit for.
We see everything, child. All your sins.

Just accept lot in life. It is your fate.
Divine will and His justice sublime.
Work on wheel and in time you'll pay your debt.
Enter heaven at the end of the line.

Just bend down. Just bend over. Get with it.
And once more buckle nose to the ground.
Perhaps one day you'll shout, I am free, let me out.
Until then, debt is your life sublime.

Book of Power

Chela, you have now passed our judgment.
We now know what's within you to bring.
And we see all the things that you're fit for.
We see everything, Chela. And sins.

But we see that you've talent deep inside.
We see here that you're special. Oh my.
Look see how this one stands, doesn't cower.
He's a brave one, oh yes. Dear. Oh my.

Well we see that you bring a small skill set.
A small light. Tiny talent inside.
So we think that we might, yes just maybe
Have a job for you. Here, step inside.

If you promise to work for The Big Guy.
If you promise against us not to sin.
If you promise you'll take this one small test.
Then welcome Chela and do come straight in.

But let me tell you this one thing important.
Something that you must never forget.
If you betray this our mass, better run very fast.
For judgment is followed swiftly by wrath.

Book of Keys

Dear One,

As you get to this point and you realize,
That a judgment is given to shame.
That a judgment is given to threaten.
That a judgment is God's name in vain.

Please just stop now and listen to Michael.
As he tells you "no one ever sinned".
'Twas a part of ascension's third triumph.
'Twas a part that we played so we'd win.

Now as the light shineth brightly from your eyes.
And as understanding dawns you may cry.
Now stand up. Just get up.
Raise your arms. Fists far up.
There's no penance.
Love's the reason.
Now fly.

Sacrifice (replaces Hanged Man)



New Energy Archetype

In the new energy, this is an awakening card. In the new energy, this card reminds you of the sacrifice you make when you incarnate on a planet in order to accomplish **The Great Work**, which is the work of **Planetary Evolution** leading to **graduation** into a cosmic community of connected and ascended worlds.

Here once again we find the **joyful, masterful, powerful, connected, lightworker, star**.

Here, we see our Self, descending into darkness in order to lift physical creation (here symbolized by the Earthen wheel) back up towards the light

of connection. Notice, we are always anchored to source no matter how far we “descend,” but we are inverted/disconnected as we dive beneath the waters of physical existence.

Unfortunately, the pain and suffering that arises as a consequence of disconnection is a necessary sacrifice. For reasons explained in *The Book of Life: Ascension and the Divine World Order*, we cannot lift a planet while whole and fully connected. To overcome **Evolutionary Stagnation**, the physical Body, we must work in the darkness of disconnection.

At this moment you may not remember your disconnection or the profound sacrifice it entails. You may also forget that this was your choice, but it was. Before incarnation on Earth, while fully conscious of the Plan, and fully cognizant of the great sacrifice involved, you agreed to be disconnected so you could accomplish the **Great Work**. You understood the implications.

You understood the work involved.

You chose to sacrifice and descend.

Through many lifetimes and on many shores you have struggled in duality to evolve/build and **graduate this world**.

Many times have you felt depressed and alone.

Many times have you have cried out desperate and forsaken.

Many times have you wanted to give up, let go, leave the body, and return to the bliss of full **con-**

nection.

But, you did not. Instead, you struggled and you sacrificed. Always focussed on the task at hand, and always aiming to accomplish the Great Work, you sacrificed knowing that one day your work would be complete and **Graduation** day would be attained. Now, thanks to your sacrifice and the sacrifice of all others on this planet, the **Great Work** is finally complete and the **Promise** can now be fulfilled.

To move forward, release all attachments to duality and discord. Release all vestiges of hatred and “sin.” Heal, awaken, activate, and connect your body and mind. Align your life spaces. Transform the **World**.

Wake up.

Stand up.

Rise up.

Ascend.

Old Energy Exposure

In the old energies, this card is, according to Mathers and Ouspensky, and despite its misleading name, clearly about a chosen sacrifice. But if sacrifice appears in both the old energy and the new, what distinguishes the two? The difference is to be found in the reason that is given for sacrifice.

In the new energies, we chose to sacrifice and descend into disconnected bodies, we choose to struggle in duality, and we accept the suffering and pain that arises as a consequence of working blind in duality because, like the time we put into building our homes, the sacrifice is required to accomplish the **Great Work**.



In the old energies, however, the reason for sacrifice is much different. In the old energy, in both the Book of Slavery and the Book of Power, the reason given for enslavement “to [the devil’s] black cube under the shadow of deceit” (Ouspensky, 1913), the reason giving for submission to **The System**, the reason for poverty, pain, suffering, and woe is so that we can complete the **fool’s journey!**

In the old energy, we are told we learn, grow, clear karma, temper our individual self, redeem our individual soul, prove our fair worth, and pay our temple dues through sacrifice and suffering on “the tree.”

As P.D. Ouspensky (1913) says, we choose this suffering because, after trial, initiation, suffering, fall, and fails, this is how we learn Truth and know ourselves.

The Book of the Triumph of Spirit

Thus, in the old energy, this is not the sacrifice of disconnection and the painful descent into Maya for the purpose of collective participation in the Great Work of **graduation**/ascension. In the old energy this is the twisted sacrifice of suffering, abuse, exploitation, and obedience to another, justified and excused as a “learning journey.”

In the old energies, you are the fool in school and this card represents your ongoing, painful, sacrifice. You should accept pain, suffering, inequality, and despair because, as the old energy pundits say, after the “sacred mystery of sacrifice,” which A.E. Waite calls the Mystery of Death, you’ll find a glorious and powerful **resurrection**.

Do not whine and complain.

Do not rise up in revolt.

Do not demand what is not yours.

Accept what comes your way as part of your life’s lesson plan.

Find benefit from the horrible suffering and sacrifice.

Find the silver lining in poverty and suffering.

Remember, what does not kill you makes you stronger.

Remember, the smart, the wise, the virtuous, the “chosen,” willingly sacrifice themselves to pain, exploitation, and abuse, for it is on the fool’s path that enlightenment, evolution, redemption and salvation is to be found. Thus is the message of the old energy archetypes.

Old Energy Dismissal

Of course, in the new energy, we put aside this foolish nonsense as we **realize** the full Truth.

The truth is, your soul does not need to grow and evolve. The truth is, your Self does not need to prove itself or redeem itself. The truth is, your soul carries no sin. The truth is, there is no debt to forgive. The truth is, God does not, and would never, punish, or test, or temper, or condemn. The truth is, the fool’s journey is a horrible, detestable, lie.

The truth is, you are a **joyful, powerful, masterful, victorious stars**. The truth is, you do not need to submit. The truth is, you do not need to evolve. The truth is, your soul does not need to grow. The truth is, you do not need to perform.

The truth is, you only need to answer the call.

The truth is, you only need to heal and awaken.

The truth is, you only need to activate and ascend.

The truth is, your sacrifice is nearly over, the Great Work is complete, and the planet is ready for **graduation**.

To be clear, new energy versions of this card do away with the old energy notions of sacrifice, submission, and the fool’s journey through life.

The message needs to be clear.

We have sacrificed, that is for sure, but this is the sacrifice we make to evolve a species, graduate a planet, and build a new **Pearl of Creation**, a new cosmic home.

Book of Slavery

Child, this card shows you your sacrifice.
This card shows you your fate.
This card shows that you'll always,
Sacrifice all, if for only God's sake.

Power and knowledge from submission.
Blood and sweat are rewarded, here's how.
Submit and desist. Heave the tar, ho the pits.
Sacrifice is the way forward to Tao.

Book of Power

Child, this card shows you your sacrifice.
This card shows you your fate.
This card shows that you'll always,
Sacrifice all if for only our sake.

Power and knowledge from submission,
You can rule o'er the roost, this is how.
Bend down low at the step.
Drink a cup, pass the test.
Then come sit on the throne with the best.

Book of Keys

You've sacrificed much for God's theory.
I can see it in depth of your eyes.
You have struggled past pain and are weary.
You have cried million tears as you died.

I understand all the pain you have carried.
Weep with you over death of what's fair.
Understand all the hate you have buried.
So that we could lift Earth up to air.

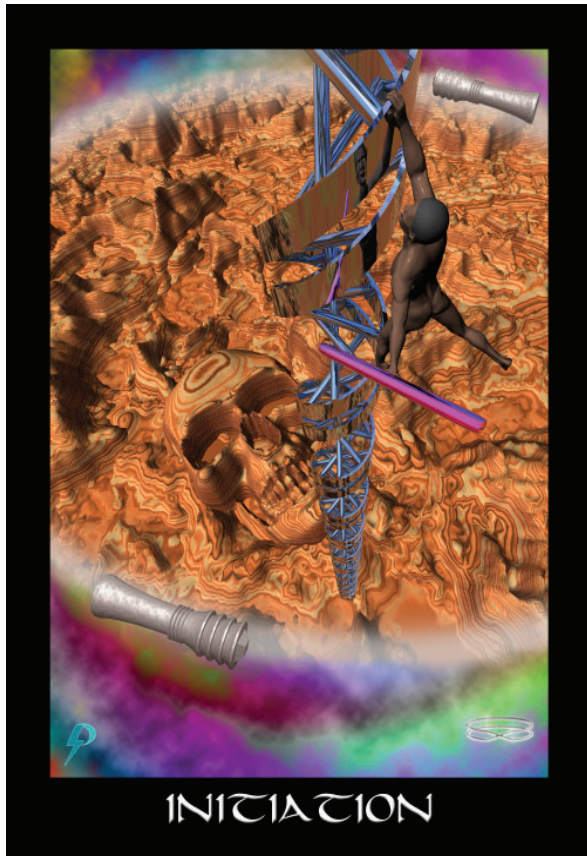
But whatever you've done, doesn't matter.
No great evil will get in your way.

No enlightened one will ever natter.
Even you said, "The piper I'll pay".

So stand tall and forget all the evil.
Forget ugliness you bore inside.
Stand up tall for here comes the upheaval.
Stand up now, ride the energy tide.

For the pain and the tears and the sacrifice.
Were for purpose, ascension sublime.
So stand up and push out. Was there ever doubt?
'Twas Sacrifice made us masters sublime.

Initiation (replaces Death)



New Energy Archetype

This is an **awakening** archetype. At an individual level, this card refers to individual initiation, i.e., the commencement of the struggle out of darkness and confusion (i.e. Babylon/Maya/hell). This is the drive towards healing and connection **activated** by **the calling** to awaken.

In essence, this archetype marks the beginning of the formal process of awakening, activation, and ascension, but it can also represent a “moment” and milestone in the process, particularly when we choose to continue our ascent towards connection. Initiation is also re-initiation, a point after we have

overcome an obstacle or reached a significant plateau when we decide, perhaps after a period of rest and integration, to continue our ascent.

Here, after formally and consciously setting your intent, you move forward. Here, you take a deliberate step upward as you continue your struggle out of despair, desperation, darkness, and death. Here, you take a purposeful step forward towards healing and connection (awakening, activation, and ascension).

As with all archetypes, this can be read at an individual and at a collective level. At a collective level, this is the initiation of global transformation leading to **graduation**. Transformation starts slow but proceeds in three exponentially accelerating, an increasingly disorientating for those not moving forward, waves of shift and change. You should know, the global transformation that leads inevitably to global ascension and graduation is a rapid unfolding that, once properly initiated, cannot easily be stopped.

You should know, during the final years of the **old world**, three major initiations followed by three increasingly remarkable waves of personal and global transformations will occur. The first wave crested at the turn of the 21st century. It brought subversive and globalized inter-personal communication (computers, then smartphones) which allow connection to any point in the planet’s fabric! The second wave crests in the next few years. It will bring powerful, quantum technologies and the ousting of elites and their establishments. The third initiation has already begun. It brings a tsunami of personal and global transformation. With each

passing day, it builds strength and power. It will crest, let's say, in this moment, 2030, in Frashok-ereti, which is complete repair/**renovation**⁵ of the planet and its people, and the establishment of Shambhala.

Old Energy Exposure

In the old energies, this card, despite its grim name, is presented as alchemical transformation, meaning a transformation of personality and self. As A.E. Waite says, it is not physical death, it is a “change in the form of consciousness and the passage into an [alternate] state.” It is, as he says, “rebirth, creation, destination, renewal, and the rest.”

Clearly, in the old energies, this is also a card of initiation. The question arises at this point, what is the difference that corrupts the meaning and makes this an old energy archetype? The difference is that in the old energy, this is a key movement in the suppression of Self and indoctrination into the System. In the old energy, this archetype represents the “destruction preceding ... regeneration” (Papus, 1982). This is the psychological and physical violence of military indoctrination which destroys the ego in order to rebuild for compliance and servitude. This is the psychological and emotional violence of esoteric initiation which ostensibly does the same.

To be clear, in the old energy, the death archetype is a euphemism for the ritualistic destruction and subsequent reconstruction of your self, usually performed upon you so that you might better “fit” in (to the System), but sometimes undertaken willingly, as a conscious step on the lured path to power



and **sin**.⁶ As you are repeatedly told, your **You** must die so that **you** can fit in.

Old Energy Dismissal

Of course, in the new energies we brush aside this foolish nonsense. In the new energies, we come to understand that **death** represents the delusions of disconnection, and that the **sacrifice** of Self is counterproductive nonsense,

As we initiate we remember, we are not old energy fools, souls in training, rejected sinners, karmic scapegoats, or evolving apes.

As we initiate, we understand, we are already

⁶ A “sin” is any action, unaligned with Highest Self, that causes harm to another living being. For more, see <https://spiritwiki.lightningpath.org/Sin>

⁵ <https://spiritwiki.lightningpath.org/Renovation>.

The Book of the Triumph of Spirit

sparks of Divine power and light and we **do not** have to prove ourselves worthy.

In the new energies, we heal, connect, and take another step up on the splendiferous ladder of ascension.

Book of Slavery

Child, this is transformation.

This is change.

This is passage.

This is death.

This is fear.

This is judgment.

This is passage.

This is death.

Are you worthy?

Are you strong?

This is passage.

This is death.

Are you sure

That you're not wrong?

This is passage.

This is death.

This is passage for the few.

This is death for he and you.

Runaway dear, runaway,

Come again another day.

Failed to dare?

Don't despair.

There's no passage

This is death

Sure next time.

You'll change this tune.

But 'til then just go away.

Try again another day.

Book of Power

Child, this is transformation.

This is change.

This is passage.

This is death.

This is fear.

This is judgment.

This is passage.

This is death.

You are worthy.

You are strong.

This is passage.

This is death.

Now we're sure

You play our song,

This is passage.

This is death.

This is passage

For the few.

This is death

For outcast crew.

Kneel and pray.
Your ego slayed.
Welcome in
Your dues are paid.

Book of Keys

Open your heart.
Open your eye.
Open your mind.

Breathe deep a few times.
Listen and repeat after me.

We are one, child.
We have won.
Welcome home.
The deed is done.

We are one child.
We have won.
Time to get
Back to the sun.

We are one.
Child, we have won.
Deep inside.
This blissful pun.

We are one, child.
We have won!
Sing Shambhala.
For Kingdom come.

Passage (replaces Temperance)



New Energy Archetype

This card is a reconnection card.

This card represents a point of challenge in your individual process, and our collective, process; especially a challenge that is successfully met.

This card represents a point in the individual and collective process when you/we have taken, or are about to take, a step forward towards full reconnection with Self.

This card represents a point in the individual and collective process when we have healed, or about to heal, ourselves of anger, hatred, fear and despair.

This card represents a point when we have risen, or are about to rise, above selfishness, self deception, delusion, and that burning hunger for money and power.

This card represents a point in the process where we have made the right choice.

This card represents a point in the process where we have proven our position to Self.

This card represents a point in the process where we have fully embraced our inner Light.

This card represents a point in the process where we finally and fully “let go.”

This card represents the moment when we step forward and become who we are.

Look at the card and face the angel.

This angel is You.

This angel is your **Highest Self**.

Standing on the path to awakening, activation, and ascension, your Self holds a mirror towards you, reflecting back the actions and inactions, the anger and hatreds, the beliefs and the values of your bodily ego, that is... little “y” you.

If, in this reflection, you see your self fully aligned with Self, the way is cleared and you may step forward for embrace. If, in this reflection, you see misalignment and disjuncture, then you still have work to do and you still have time to do it. Step back and renew your efforts to align.

Keep in mind, there is no punishment or exclusion implied in this card. This is simply you learning to be You. In essence, this card represents a merging, submersion, and submission to Self. The more aligned you are, the clearer the mirror of your life, the more you can be fully You.

Old Energy Exposure

In the old energy, this card is typically presented as a tempering or alchemical/mystical “union of opposites.” The goal of life, the goal of “spiritual” aspiration, we are told, is the balancing of cosmic opposites, both inside and out.

Combination and Conformation, as S. L. MacGregor Mathers says. “The black and white person-ages are now united in a single androgyne figure. Even the Bees and the Serpents on their robes have made an alliance....The original duality has been completely compensated” and “balance” has been achieved, so sayeth the Crowley the Beast.

In the old energy, this card is an archetypal cornerstone. In the old energy, this “checkerboard” idea that there is some cosmic “balance” in all things is the archetypal stone upon which the old energy System is built.

Upon this rock did they build their esoteric church.

With this archetype in place, it becomes possible to justify all manner of violence, exploitation, hatred and abuse as simply “moves” on a divinely sanctioned cosmic checkerboard. Black or white, good or evil, it all part of the same divinely sanctioned, naturally evolving, plan.

Without this archetype in place, ideas of enslavement (euphemised by the **Devil** as a choice we



make), punishment (euphemized as **Justice**), and the **Fool's** stupid path of suffering are no longer logically or phenomenologically tenable.

This cornerstone archetype is their greatest strength, and their greatest weakness. With this archetype in place, the System stands. When this archetype is erased, the System crumbles quickly into dust.

Old Energy Dismissal

Because this archetype is a cornerstone archetype in the old energy Creation Template, we must put extra effort into removing it from consciousness. Therefore, pay attention.

The truth is, there is no such thing as a cosmic balance or checkerboard playing field. There is only

The Book of the Triumph of Spirit

Consciousness expanding into Creation.

The truth is, there is nothing salutatory in the clash of oppositions, or in their misguided alliance. This is mere ideological delusion, used to excuse and justify exploitation, suffering, and pain.

The truth is, we are all **joyful masters sacrificing** our **connection** in order to work on, and **graduate**, the **world**.

The truth is, darkness is not a thing unto itself. Darkness is merely the absence of light. We do not integrate our darkness. We dispel it with our Light.

The truth is, gaining passage is simple. Just be your Self, truly. Be that being of light, love, and power that you are. Be that being of compassion, empathy, and care that you always and forever have been.

From this point on there is no “business as usual.” In order to move forward, in order to merge with **Highest Self**, in order to be who you truly are, you must face the truth in the mirror.

Always remember, in the new energies, there is no judgment or punishment. In the new energies, there is emergence and unity, forgiveness and acceptance.

This is not a judgment.

This is an appeal.

Book of Slavery

I wonder do you really know?
And I wonder, does God run this show?
And I wonder about the shame inside.
And I wonder about your wounded pride.

And I say cause I know it is true.
You are worthless, foul, and stinky, phew.
Not tempered, and sure not a candidate.
A maledict, potential castigate.

This foul world of sin that you bring.
Sacred space of the “song” that you sing,
Temple stinks of foul darkness inside,
Inner sanctum hides shit you’ve piled high.

Listen up sir, get away, get away.
You’re not worthy to pass on this day.
Listen up or the piper you’ll pay.
If you don’t go to work straightaway.

Book of Power

Well I see dear that you finally know,
It's not God who runs this foul show.
And I know you'll feel shame once inside,
And I know that we will wound your base pride.

But I say this to you 'cause it's true.
You are chosen and worthy, woo hoo.
And you sure are a candidate sir.
Just kneel now before throne and concur.

For no action you take will bring sin.
No foul deed will erase our big grin.
'Cause it's us that runs this global show,
As your brothers the world over will know.

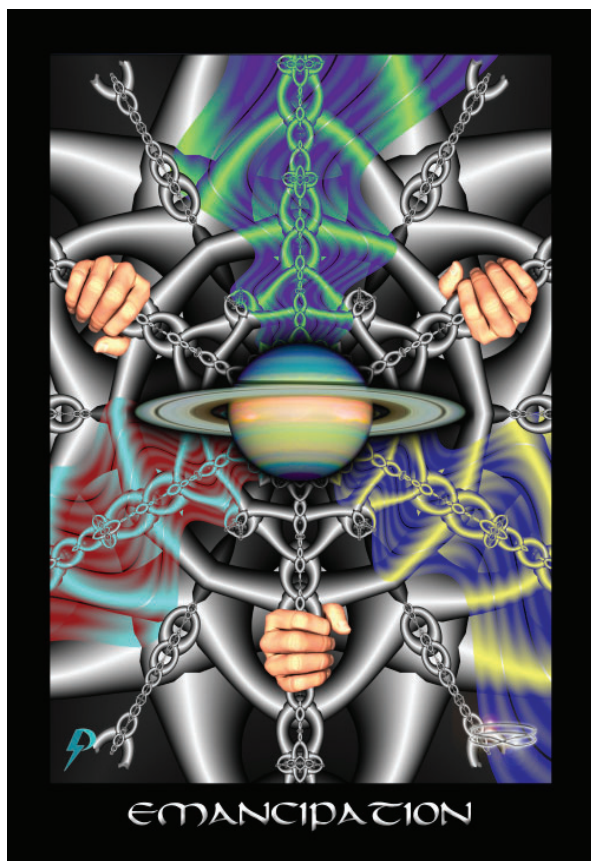
And they'll give love to you it is true,
As we revel this our rapacious stew.
Know the fate of the brother disloyal,
Betray us and your flesh we will broil.

Book of Keys

Dear one, as you stand, please know this,
This angel does not doom, diss, or hiss
This angel simply welcomes with pride,
So there's nothing that you have to hide.

Neither greed, graft, nor sin prevents win.
Just put down the old ways and come in.
It's so simple, so lovely, sublime.
If you give voice to the God that's inside.

Emancipation (replaces Devil)



New Energy Archetype

This card is an activation card. This card represents the mental, emotional, archetypal, and spiritual emancipation that comes as we individually and collectively halt the violence and oppression against us, and establish right environment, right action, and right thought. Emancipation represents a new beginning and a clear break with the System that has kept us in chains.

Individually and collectively, this card represents the removal of old energy chains, emancipation from old energy archetypes, freedom from old energy

delusions and self-delusions, refusal of old energy limitation, the rejection of old energy self, and the ejection of old energy ideology.

This card represents Consciousness/Spirit/God, progressively, and inevitably, breaking through

Note that emancipation is not necessarily a difficult process. As conditions for connection improve as a consequence of our individual and collective progress forward, Consciousness begins to easily and inevitably break through the increasingly weak System chains that bind.

It is important to understand, emancipation is a process we all necessarily participate in. High or low, we respond to **the call**, emancipate, **connect** and **empower**. Connected and empowered, we embrace our **lightworker** role and help others to do the same.

Leading the way for each other, we advanced, by degrees, towards individual and planetary **victory** and **graduation**.

Old Energy Exposure

In the old energy Book of Slavery, the archetypal energies of emancipation are turned completely on end, as you can see in the Freemason's Devil card. In the Devil card, the freedom of emancipation becomes enslavement and chains. The old energy message is crystal clear. Male or female, you are bound by chains. A warden oversees your bondage and prevents your escape.

Clearly, in the old energy, you are considered primitive chattel. This should be no surprise. Enslave-

ment of humanity has always been an open secret. Most people don't pay much attention, but on occasion we realize the awful truth. If one day you should realize your slavery, excuses come readily to hand. You chose it. You deserve it. You are being punished. It is God's will. It is your lesson plan.

Of course, the reason given for your slavery is different, depending on which book you read from. If you read the Book of Slavery, you are told that your slavery is the result of inner weakness, sin, divine disgrace, or some past foolish failure. As Ouspensky says of the devilish imagery, "This is a picture of weakness...a picture of falsehood and evil. They are the same man and woman you saw in the garden," but they have failed in some awful way. They have given into temptation. They have succumbed to horrid sin. "Their love ceasing to be a sacrifice, [becomes] an illusion."

In the Book of Power, the message is the same, only slightly different. This Earth is seen as a schoolhouse and incarnation is equated with education, redemption, freedom, or evolution. Your enslavement is surely no secret, but you are special and chosen. You are chosen to break free because you are different, special in some way. The masses are unevolved, unwashed, dangerous, defiled, debased, descended, degraded, and degenerated. Give them power and they would destroy this Earth. Brothers understand, the chains that bind all humans are necessary, chosen, and divine.

Whether we speak of slavery or power, the message of the devil archetype is ancient. Ejected from the garden, you are bound by a karmic wheel. Too stupid to follow the rules, you are driven by a pedagogical plan. For weakness and sins you have



committed, you are banished and punished on Earth. The Devil oversees the sentence and curriculum. A chosen few will enlighten and break free, but the rest remain enslaved and in school.

Old Energy Dismissal

Of course, in the new energies we put this old energy nonsense behind us. Understand, The **Great Work** does not now and has never required mass human suffering and enslavement. Humans are not now, nor have they ever been, savage beasts in need of control. The situation now is a thing that sometimes happens, a risk of progression through Stage Sex.⁷ We do the best we can, but it simply happens that sometimes, things get out of hand.

But not this time.

⁷ https://spiritwiki.lightningpath.org/Evolutionary_Stages.

The Book of the Triumph of Spirit

This time it is time to awaken, realize, and emancipate.

Remember, you are no Fool in School and your purpose is not redemption or soul evolution. Neither are you here to serve. You are **joyful master**, a **lightworker** whose purpose is to work on a **world** and bring it forward to glorious, **victorious graduation**. If somebody tells you anything else they are lying. It is as simple as that.

Book of Slavery

Child,

You cannot move forward.
You cannot be glad.
Don't you know who you are?
Don't you know that you're mad?

It all stems from that time.
From some foul karmic crime.
Some forgotten old sin.
From foul weakness within.

What? My gosh. Oh my God.
Quickly, call in the squad.
Let us beat this one down.
Turn that smile to a frown.

Remind him what it's for.
Show him straight to the door.
His mind can never grasp.
Cannot learn secret clasp.

Barely more than a slag.
Not worth more than a rag.
Not like this here fine stag.
Now he's got right to brag.

Book of Power

Chela,

You can now move forward.
You can now be glad.
'Cause you know who you are.
'Cause you know you're not mad.

It all stems from some time.
From some foul karmic crime.
But you remembered your sin.
Admit foulness within.

Now as your mind surely grasps.
Here's our deep secret clasp.
Now just follow my son.
For your work's just begun.

We can teach you by gosh,
We can remove that cross.
We can show you the way.
And we give better pay.

Just put "John Henry" here
And we'll re-seal the deal.
Accept this much bigger bone,
And this much larger home.

Book of Keys

Dear one,

This side or that,
It was part of the vat.
It was energy swirl.
It was duality's whirl.

It was suppression of pop
'Til we reached for the top.
So take Michael's word here.
Time you threw off your fear.

Time you took power back.
Time you stepped off the rack.
Time for ascension is now.
Time for big "pow, pow, pow".

Time for heavenly praise.
Time to welcome sun's rays.
Time you plugged into tap.
It's as easy as snap.

Plumb the depth of this rhyme.
And breathe deeply three times.
Look inside, deep down there.
You've got power to spare.

So just take off those chains.
Weakness is not your game.
You've got power of sun.
With a wave, chains undone.

And now breathe a few times.
Listen to end time chime.

You've got power to share.
Break the chains and declare.

I am one with the sun.
The old world is now done.
And a new world that will care.
Comes with trumpets and flares.

So now take power back.
Swat away bug attack.
Wave your powerful hand.
Hit ascension grand slam.

For you're one with the sun.
The old world is now done.
The new world I declare.
Shambhala this I swear.

Power (replaces The Tower)



New Energy Archetype

This is an ascension card. This card applies both to individual ascension and to the final end-times unfolding.

For the individual, this archetype represents a personal milestone on the road to activation and connection, or the final powerful expansion and expression of Consciousness in creation. This is the individual **lightworker** in full manifestation. This is the realized **master**, **emancipated** and in full power glory. This is unity of self with Self, full expression of Consciousness, **victory**, and confident solidification of purpose.

This is realization of individual divinity.

This is the triumph of spirit.

At the collective level, this card is the final milestone of activation and connection. As humanity awakens, **emancipates**, and **victoriously** claims power, humanity graduates as a collective and **connected** star nation. This is when a sufficient minority have realized this truth: as **joyful masters** of this **world**, it is we who have the **power** of creation. This is when a sufficient minority have realized this truth: when across the **world** we are joined in unity, we have the full **power** of God.

This is unity off global Consciousness.

This is the final dispersal of darkness.

This is the emergence of Spirit into plain view.

This is the annihilation of the old world.

This is the realization of collective divinity.

This is the global triumph of spirit.

Old Energy Exposure

Even though old energy decks, as we know, represent the corruption of spiritual archetypes, nevertheless this card retains a pure representation of the plain spiritual truth. A.E. Waite in *The Pictorial Key to the Tarot* (1911) suggests this card represents “the materialization of the spiritual word.” In this, he is one hundred percent correct. Papus, in *Tarot of the Bohemians*, agrees, for he also says “it signifies the invisible or spiritual world, incarnated in the visible and material world. “Thus, in the old energy, this card is insight, the recognition of the

truth, and the bursting of internal light” (Papus).

Curiously, in the old energy, this is also the triumph of spirit in the world, but with one important difference. Whereas in the new energy, to get “the power” you **emancipate**, **realize**, and **connect**, in the old energy it is about overcoming the weaknesses that originally and continually leads to your fall.

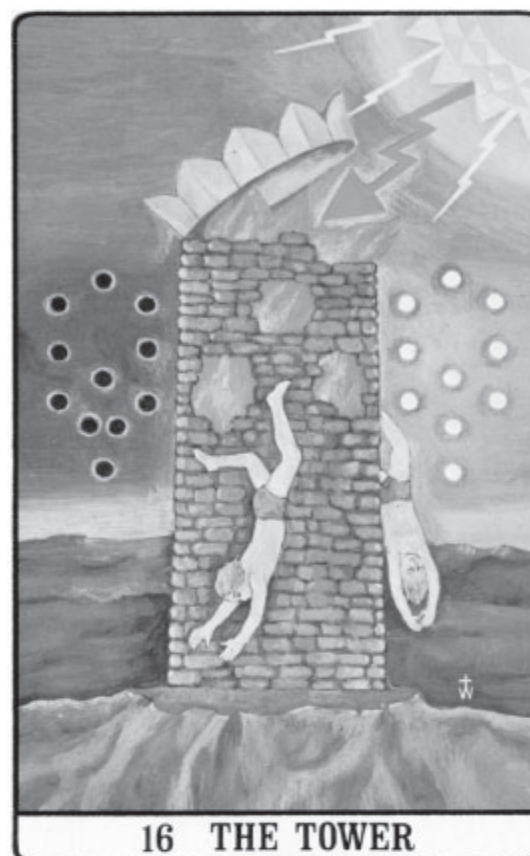
In the Book of Slavery, this card is often read as a warning. This is dangerous territory. Be careful. Take time your time. Doubt yourself. Perhaps you should stay away. As Ouspensky says, if you mess up, the consequences are severe.

In the Book of Power, this card is read as the “chastisement” (Waite, 1911) of a chosen one reaching too far. Perhaps it is about the trials, tribulations, and “purifications” that go to create the good peon. As Crowley says, this is the power of purification through fire. There is power and reward, for the few, but “to obtain [such] perfection, all existing things must be annihilated.” (Crowley). In the Book of Power, this is suffering, testing, submission, and the destruction of your ego so you can be rebuilt in the image of the masters.

Old Energy Dismissal

In the new energies, we do away with all the nonsense about weakness, danger, disruption, fire, and purification. The only fire is the fire of your consciousness as you awaken, **emancipate**, and **connect**. The only danger, especially as **graduation** approaches, is in not moving forward fast enough.

In truth, for those locked in the old energy, this is “disaster and upheaval,” “ruin, disruption, and overthrow.” For those in the old energy, this is



despair. The Lightning Flash of Consciousness blasts the top of the tower (the crown chakra) but in so doing, the unprepared are thrown convulsing to the ground.

Those who resist change...

Those who suppress Consciousness...

Those who deny the truth...

Those who are too afraid to move forward...

Those who refuse to renounce Mammon...

Those who, out of misinformed choice or indoctrinated fear, “remain behind”...

...these are the ones that suffer unnecessarily when spirit triumphs in the **world**.

Of course, it does not need to be that way. When

The Book of the Triumph of Spirit

fully prepared and ensconced in new energies, one experiences the Triumph of Spirit with **power** and **joy**.

In the new energies, this is the end of the old world; but, we find no reason to lament. If the caterpillar enters the chrysalis, it always emerges transformed.

Be aware, the collective Triumph of Spirit occurs as the result of a million individual triumphs. Think of our earth as a big bag of microwave popcorn. As Consciousness enters, vibration ascends, the energy boils, and the kernels begin to *pop*. At first, it is only a few that *pop* into full power, but as the energies continue to rise, these few trigger more and more. A chain reaction of expanding Consciousness and Divine realization subsequently ensues until shortly, and finally, God emerges in the world.

This collective triumph of spirit is illustrated in the **Great Invocation** animation.

Book of Slavery

Child,

This is the flash of insight,
This is the height of God's might.
This is the end of old world,
This is our flight as foretold.

This is the weakness within,
Which you see but cannot over win.
Better step back and stand way over there.
Or for sure you'll be blinded by glare.

Book of Power

Chela,

This is the flash of insight.
This is the height of God's might.
This is the end of old world.
Let the new world now quickly unfurl.

As commander I come and I speak.
There is nobody here that is weak.
For the power of light we all share.
No matter how fancy our lair.

So stand up and wake up, it's your time,
You must heed the one who brings this rhyme.
Please attend to this message true blue
Release hold or expire, "boo hoo."

Book of Keys

Dear one,

I agree life was creepy with sin,
'Twas disgusting and putrid within.
But remember my child when you pray,
You descended. 'Twas the only way.

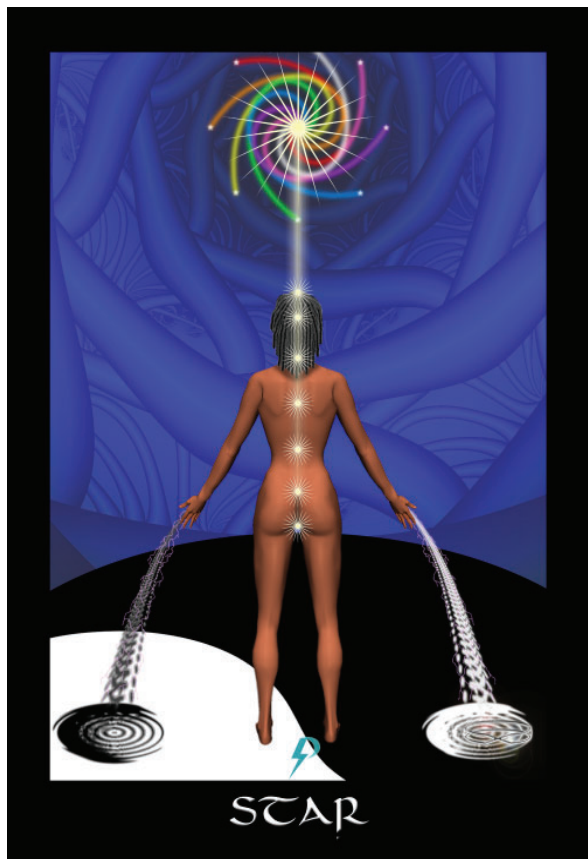
'Cause you see it gets awfully darn bright.
When just one of us turns on the light.
Just imagine what a handful could do.
Or a billion concurrent. It's true!

For here in this poem I declare,
This is no time to play solitaire.
You must open yourself to the light,
You must put it all back 'xactly right.

For the rocket's red glare that you prayed?
That is nothing to what comes this day.
All that brilliant and blinding pure light?
It's enough to give Beelzebub fright.

So step forward, accept gift to you.
All this stuff? You believe it, it's true.
So believe what I've come here to say.
Shambhala in this place, on this day.

The Star



New Energy Archetype

This is an ascension card. This card represents both individual and collective ascension.

At the individual level, this card represents an individual who is fully **aligned**, properly grounded, and completely **connected**. At the individual level, this card represents someone who has thrown off the blindfold, has seen the truth, has understood their place, and is properly prepared and positioned.

This is an individual fully **aligned** and in tune, doing their part to complete the Great Work. This is an individual who will comfortably ascend with

the rising tide.

Here is an individual who is **strong, powerful, and connected**.

Here is an individual who is confident and certain.

Here is an individual who understands.

Here is an individual that is ready.

Star is the beautiful and serene **master** drawing from the energies of creation.

Star is the calm and content **lightworker** manifesting the **world**.

Star understands the **sacrifice**. Star remembers the **promise**. Star has **realized** the Truth. Star has **strength**. Star is **powerful**. Star is ready, willing, and able to claim **victory, graduate, and connect**.

Now, it is time, to embrace fully the truth of your star.

At the collective level, this card represents a **world** that is fully **aligned**, properly grounded, and completely **connected**. This is a world that has thrown off the blindfold, seen the truth, understood what is happening, and is in proper position. This is a people on a planet comfortably and ready to ascend.

Please note, when the world finally **graduates**, the entire world and all people must be elevated. None can be left behind.

Old Energy Exposure

As with many cards positioned near the end of this book, the old energy ideology remains remarkably true to the new energy truth. For example, A.E. Waite says this is “Truth unveiled” and “supernal Understanding.” Ouspensky revels in the extra insight and awareness that this card represents. “I discovered unexpected correlations in things which hitherto I had thought foreign (Ouspensky, 1913).

This is all certainly true.

In the new energy, you are a fully **connected** star.

The only difference is the process and path that gets you to this. In the *Book of Slavery*, Papus once again calls for trials and tribulations. “Here we find the symbol of immortality. The soul (ibis or butterfly) will survive the body, which is only a place of trial.... The courage to bear these trials will come from above (the stars).” The message is clear, we graduate to supernal understanding when we have suffered fully the trials.

In the *Book of Power*, the message is the same, except with the esoteric caveat that this for the “prepared mind” only (Waite). In the old energy this is not egalitarian and global **graduation**. In the old energy, this is power and glory only for the chosen few. Only the chosen few fully “receive her influx.”

Old Energy Dismissal

In the new energies, we put behind nonsense statements of trial, tribulation, exclusion, and worth. Trial and tribulation have no salutatory effect. Judgment and punishments damage the physical unit. Rejection undermines our soul connection. There is simply no excuse for it. We are not ejected



from the Garden. We are not being punished by birth. Evolution doesn't produce “silver seed.” God is not choosing the worthy and leaving the chaff behind.

In the new energy, the message is different.

In the new energy, the message is clear.

You are a **master** at birth. You are a **star** when healed, connected, and fully matured. All you have to do is heal the physical unit, remove the blind-fold, **awaken** the mind, **emancipate** your heart, **realize** the Truth, and step forward into your light.

Take responsibility.

Embrace the power and glory that is within. Awaken, activate, and ascend. Here's how.

The Book of the Triumph of Spirit

Chi/prana/oxygen.

We need energy to initiate the process.

We need energy to activate the body.

We need energy to light the fuse.

We get energy by inhaling, by breathing.

With the imagery of Star in mind...

Breathe deeply and meditate.

Breathe deeply and visualize.

Breathe deeply and awaken.

Breathe deeply and activate.

Breathe deeply and ascend.

Connect with your highest Star.

Draw energy from above, send energy down below.

Realize and embrace the reality that is around you.

Realize and embrace the divinity within.

Align and **activate** your chakras.

Request release of your kundalini.

Masterfully manifest the will of Self.

Take responsibility for the **world**.

Transform the planet.

Graduate and ascend this glorious creation.

Book of Slavery

Child,

Light and life and woe and strife,

A bitter life, a lonely life.

A star within, powerful Jinn

But only if you strive and win.

But we know you can't prove your worth,

We know you can't achieve rebirth

We know that your mask it hides.

A putrid sheeple deep inside.

So give it up and get thee out.

A star within? We have our doubts.

Get back to Wheel and work and woe.

'Tis only way to prove your soul.

Book of Power

Chela,

Light and life and woe and strife,
A bitter life, a lonely life.
A star within, powerful Jinn
But only if you strive and win.

And only if you prove your worth,
And only if you achieve birth
And only if old ego dies.
And only if your morals slide.

And only if you come inside.
And only if you lose your pride
And only if you accept sin.
And only if you help us win.

Book of Keys

Dear one...

There's a star in the heaven it's true
And it shines down on you, also true.
And its brightness gives light to this world.
As its energy's creation's base whorl.

But now here is a deep sacred cue.
There is really no difference for you.
Between the sun in the heaven above.
And the light that's within that is Love.

So if you want to pass through the final gate.
If you want to get Fabric down straight.
Just remember the light from above.
Shines in you with descent of the dove.

So embrace it because it is true.
Embrace it and prepare to pass through.
Embrace light and now rise with the tide.
Embrace life and get ready for ride.

Connection (replaces The Moon)



New Energy Archetype

This is an activation archetype. At an individual level, this card represents the breaking through of a boundary and passage through a doorway. This is the explosion of Light in the mind.

At the individual level, this card represents a shifting in Consciousness that leads to **rebirth, reconnection, victory**, and finally, **graduation**. Through connection, we overcome indoctrination. Through connection, we break the **devil's chains**. Through connection, we find our way home.

At the collective level, this card represents a global shifting in Consciousness and a global expansion

of awareness that leads directly towards global **empowerment, victory**, and final **graduation**. From this point on, we move forward into love, peace, and unity.

Note, given the imposition of the old energy System into bodily consciousness, connection, or rather reconnection, is not a simple thing. To successfully reconnect requires discipline, commitment, and preparation.

Realize the truth of your life.

Gather your **strength** as needed.

Align with Consciousness.

Initiate reconnection with intent.

Note, a mind filled with toxic old energy archetypes cannot connect clearly and persistently to Consciousness. Only a mind filled with the **emancipating strength** of new energy archetypes can successfully and permanently **connect**.

Old Energy Exposure

By now the reader should be aware, the old energy archetype system is always about diminishment and limitation, domination and control. This archetype is no exception.

In the old energies, in the *Book of Slavery*, this card represents the terrible fears that block progress forward. As Ouspensky (1013) says, it is a “mysterious world... of hostile spirits, of corpses rising from graves, of wailing ghosts.”

These fears are not illusions, they are seeded by the ones who take power. They spin false tails of

demons, devils, and hellfire. They sow seeds of terror and confusion.

Blocked by the terror of **judgment**, hobbled by deception and lie, the masses succumb to self doubt and deception and flee from Self and collective Soul. As Crowley, beast and keeper of the infernal Book of Slaves says, this is “nameless mystery...horror and...fear. All prejudice, all superstition, dead tradition.” As Crowley notes, only those with “unconquerable courage can even “begin to tread this path.”

In the old energy Book of Slavery, this archetype represents a doorway locked up by fear and confusion.

In *The Book of Power*, the message is an iteration of the stipulation to repress emotions and sanitize feelings. In the old energy, the Waite’s Moon is a clear statement of the benefit of self-imposed self-repression of our unwelcome and deleterious animal nature

To the aspirant, success comes with the establishment of a barrier between the sun of the mind, the dogs of animal emotions, and the “hideous tendencies” crawling from the abyss down below (Waite). xxx

Old Energy Dismissal

Babies are born good, and healthy people do not have “hideous tendencies.” There is The truth is, in the old energy, success only comes when you put a barrier between your mind and your emotions. With “the dogs” kept controlled and turned down, you can engage in many horrible acts against many innocent people without ever feeling guilt, shame, and regret. This is how we achieve in the old world, after all.



However, in the new energies, in the “millennial” energies, that will no longer work.

In the energies, success will be built on love freely flowing outward.

To move forward towards connection, put aside old energy nonsense. Put aside fear and confusion by embracing Love and stronger connection. Remember what was just said above.

Through connection, we overcome indoctrination.

Through connection, we break the fear chains.

The Book of the Triumph of Spirit

Through connection, we find our way home.

Book of Slavery

Dear child,
This is a barrier.
This is a door.
This is a gate.
Now please say no more.

Beyond this is judgment,
Damnation for sure.
And hellish reprisal,
For sins you've not cured.

So turn around child
And run out this place.
Better a slave in the field
Than God's judgment to face.

Just turn around quick.
Don't you dare face the sun.
You've much dirt inside, phew.
You've much work left to do.

Book of Power

Dear Chela,
This is a barrier.
This is a door.
This is a gate.
Now please say no more.

Beyond this is judgment,
But you've found the cure.
Yin now demurred,
Your foul weakness is cured.

So turn around child
And come into this place.
Better a guard in the house
Than be outside of our grace.

Come dear, turn around quick.
Don't you worry 'bout them.
They deserve what they get.
God or nature condemned.

Book of Keys

Dear One,

Stop for a moment,
And listen to me.
This game we have won,
Return I with the key.

The Ascension is now,
The new world is at hand.
A new level you've found,
And this new promised land.

So please say after me,
"Here's the joy, here's the key."
"That creation out there,"
"It starts deep inside me."

"There's no gate I must pass".
There's no race through the grass".
"Put a smile on my face",
"Love the whole human race".

Now walk proudly my son,

For the new world's begun.
 It just started right here,
 When you overcame fear.

Now the party begun.
 The old world will be done,
 And new world will emerge.
 With your powerful surge.

Just release and let go
 Become part of the show
 Implement master plan.
 Listen to Dr. Pan.

This was all just for fun
 This ascension pre-run.
 This was for heaven's sake.
 So the barrier break.

So release and let go.
 Become part of the show.
 Implement master plan.
 Listen to angel man.

You are God's on this earth.
 You are worthy, by birth.
 End the dark, I demand.
 You will build a new land.

We'll call it Shambhala.
 And we'll reinvite Ra
 Say to Isis, good game
 Release all of our shame.

And we'll bow to the sun
 That's within everyone.
 We won't worry 'bout gain
 Work in heaven's great name.

So release and let go.
 Become part of the show.
 Implement master plan.
 Listen to poet man.

As he says, "it is time".
 Come and rejoin our line.
 Get your butt on this bus.
 Ascend planet with us.

So release and let go.
 Time to end the old show.
 There's no judgment my Son.
 This is God's call for fun.

So release and let go.
 Step this way don't you know.
 It's a gate, you can see.
 'Twil set The Universe free.

The Promise (replaces The Sun)



New Energy Archetype

In the new energy, this is an awakening card. In the new energy, this archetype speaks to the plan and your purpose, which is the **joyful** exaltation of Consciousness from within physical creation. Cabalistically, this is the **Crowning of Malkuth**, the crowning of physical reality, or the point when Highest Consciousness (symbolized by the eight-spoked sun wheel expresses and manifests (i.e. rises) fully in physical creation.

In addition to representing the crowning of physical creation with Consciousness, for the individual, this archetype also represents a reminder of your

core being, and the promise of forgiveness, healing, and return. Let us be clear. Disconnection and descent into the ugly darkness of separation (i.e. duality) is putrid and painful to your **Highest Self**. Also, banging around in the darkness of disconnection damages the physical unit. To cope with the toxicity, stress, and strains of living in the darkness of disconnection, we engage in disjunctive actions, sometimes to the point of sin. This archetype represents the promise that if you undertake the **sacrifice** of disconnection in order to uplift physical creation and connect it to **Highest Consciousness**, then no matter how damaged your body may be, no matter what you have done, no matter how far you have fallen, a way will always be provided for you to fast-path-it back home, i.e. to return to the power and purity (if not innocence) of the Consciousness that is You.

Despite all propaganda to the contrary, (i.e. notions that you will be judged and discarded into hellfire), this is the unbreakable Covenant of Consciousness. This is the promise that no matter where you stand, what you have done, how much you have **sacrificed**, or how far you have fallen from connection, the door to your **Highest Self** will always remain open. If you wish to return home, simply embrace the rising sun of your own **Highest Self**.

For humanity, this is the collective recognition of divinity, mass reconnection, and the concurrent culmination of the Plan. This is not **graduation** per se., for that is a celebratory event. However, this is complete and total manifestation of the **Garden of Connection** (a.k.a. Garden of Eden, Kingdom of Heaven, or Shambhala).

It should be noted, from collective realization of divinity and the final ascent of Consciousness, it is only a short step up the podium for **graduation**.

Old Energy Exposure

As with all the cards near the back of this book, this card retains a certain purity of expression, even in the old energies. In the old energy, and in the new energy, this archetype represents culmination and new birth. In the old energy, and the new energy, the message is largely the same. As Case (1932) suggests, and as is clearly represented in the card, "...this is the stage of the new birth from natural humanity to spiritual humanity."

Or...

"By applying the correct conscious self-direction to his efforts to grow, a man becomes a truly new-born being, one 'twice-born.'" (Case, 1932).

A.E. Waite perhaps says it best. Through alchemical grinding and experiential titration we mature, grow, and evolve until one day, the "self-knowing spirit [dawns] in the consciousness above the natural mind." On that day, the "mind...leads forth the animal nature in a state of perfect conformity" (Waite). On that day, the pail, blond, blue "chosen" are born.

Crowley states it plainly. This is the "next stage which is to be attained by mankind (sic)" (Crowley, Liber LXXVIII). Those that do not meet muster, those who do not suppress the internal beast, those who do not rise to the occasion are in the end left behind.

Seems benign enough, but the devil is always in the details. In the old energy, in the Book of Slavery, we arrive at this point via servitude,



submission, and suppression of Self. We submit to authority, to power, to the "Fiery Word" of the "Emperor" above, as Ouspensky puts it. If we fail our "tests," if we fail to submit, we never attain this new birth. Our foul weakness and sin keep us pressed firmly down.

In the Book of Power, the message is largely the same. In the Book of Power, you arrive at this point via servitude, submission, and suppression of Self. The difference is that you are offered power and privilege in return for your superior "good" works. Nevertheless, sheepish submission is still required. Indeed, in exchange for power and privilege, your submission must be even more complete.

The Book of the Triumph of Spirit

To get to the top, total suppression of Self, total domination of weakness (i.e. amputation of emotions, suppression of Self), and total destruction of the most important aspects of your Self is required.

Old Energy Dismissal

Understand, despite propaganda to the contrary, and no matter side of the fence you are on, the Promise applies. There is always a fast path back to pure and powerful connection. All you have to do is face down the truth, and move yourself towards healing, awakening, activation, and connection.

Remember, there is no beast inside and no “animal nature” to control.

Remember, deep inside there is only the bright sun of our highest Consciousness.

Remember, deep inside there is only the bright light of your **Highest Self**.

Remember, deep inside, God is waiting to shine.

Understand. The goal is not to press this Conscious/Self/God back down, nor is it to “lead” this Self forth in a state of “perfect conformity.” The goal is to clear the emotional, intellectual, and ideological detritus away, to establish **Right Thought, Right Action, and Right Environment**, so that the power and glory of your **Highest Self** may shine brightly through. The goal is to align your bodily self with the pure light of Consciousness so that this **world** may **connect** and **graduate**. The goal is to be reborn as who you truly are, a being of compassion, bliss, power, and awareness.

As you begin to accept this Promise and the forgiveness it represents, as you begin to wake up and move forward, as you begin to take steps to resolve issues and clear blockages, remember, your

Highest Self will never compromise for money, sex, power, or fame. Your **Highest Self** will do everything it can to avoid harming another being. Your **Highest Self** will never conform to anything or anyone other than its own glorious Self.

If you have succumbed to disconnecting temptations, if your life path has lead you to harm others, if you act out of alignment, Self will always object. Through the **Emotional Semaphore**⁸ it uses to guide its physical self, Self will always let you know. You will feel anxiety, guilt, and shame when you have engaged in disjunctive and misaligned **Wrong Action**.⁹ If you continue to, anxiety, anguish, guilt, and shame will intensify. The longer you ignore higher Self, the more you choose to engage in wrong action, the more anguish and pain you will feel, and the more disconnected and numbed up you will have to become. In the worst cases, the anguish will lead to self-medication and eventual rock bottom. In some cases, destruction of self may be the unfortunate last resort. To avoid that moment, remember the Promise and the forgiveness it entails. Changing your ways and doing what’s right reverses your course and puts you on the fast path back home.

⁸ https://spiritwiki.lightningpath.org/Emotional_Semaphore.

⁹ https://spiritwiki.lightningpath.org/Wrong_Action.

Book of Slavery

Child, this is the light after dark.
This is the way of the ark.
This is triumph and reward.
This is the truth of the sword.

This was the promise at start.
A new day, heaven's way, a new part.
But you know, only the worthy get in,
And my child, you are so filled with sin.

But that's ok, because there is this small part.
If you insert like so, machine starts.
If you're good and you do what you're told,
Then maybe there's a place in the fold.

But for now, 'tis best if you depart.
Best if you don't act the upstart.
Best if you take self from here.
Best if you work hard my dear.

Book of Power

Chela, this is the light after dark.
This is the way of the ark.
This is triumph and reward.
This is the truth of the sword.

This was our promise at start.
A new day, heaven's way, a new start.
Just remember the play and your part.
From the masses you now disembark

Book of Keys

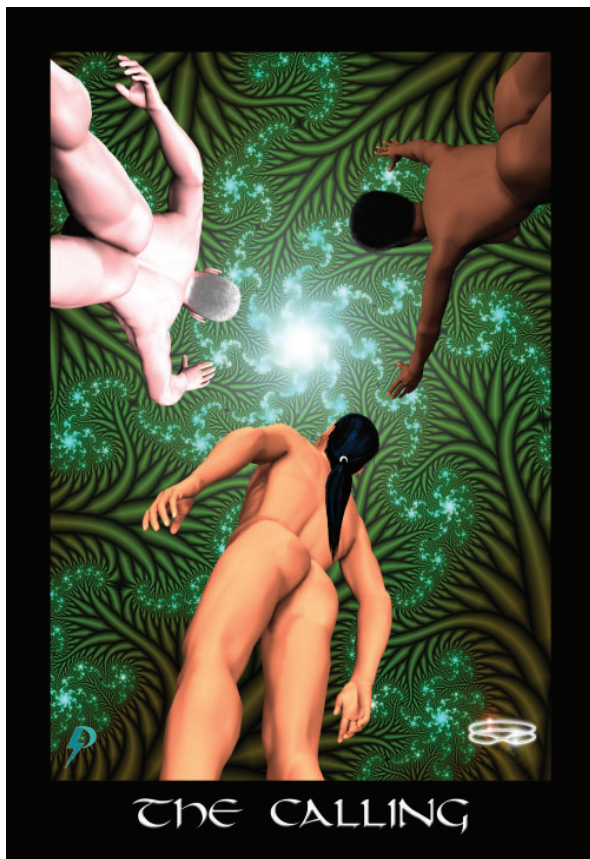
Old energy's ugly, that's sure,
Which is why we now offer the cure.
Which is simply, "To take self back from sin,
always listen to the Great Self within."

Think you hate leads to **graduation** dear?
Then you're stuck in your own deperate fear.
And the child that's inside you has died,
And you're moving through dark with no guide.

But if you put all the nonsense aside,
If you remember that deep down inside,
There's a love that shall always abide,
And a **power** that will not be denied.

And if stop with your lies, full contrived.
Then that child that's inside shall revive,
Simply attend to the whisper within,
When it says "Love for all secures win."

The Calling (replaces Judgment)



New Energy Archetype

This is an awakening card. This card represents the individual and collective call to awaken, activate, and ascend.

If you are listening, this is the gentle caress of Spirit.

If you are distracted, this is the insistent nudge of 11:11.

If you are stubborn, this is an aggressive and urgent shove.

If you are resistant, this is the powerful wrench of life/earth changes.

If you are immobile, this your mighty and fearsome downfall.

However you get to this point, however you respond to the call, however long it takes you to move, be mindful; once you get started, be careful not to stop.

Do not allow yourself to be turned away by distraction.

Do not allow yourself to be bumped from the Path, even if dramatic transformations ensues.

Consistent, progressive and positive change is required for the **Divine World Order** to unfold.

Also, keep in mind, whatever your particular trigger, whether that be the gentle touch of Spirit or a dramatic and final downfall, it has nothing to do with judgment, failure, or being one of the “chosen ones.”

Awakening is not a question of ability or talent, God’s grace, or internal instinct. Awakening is a question of global timing, that is all.

Heed the call now or face an inevitable fall.

As noted, this card represents individual and collective awakening. For your information, the awakening and activation will occur in three waves.

The first wave is already complete. The first wave struggled the hardest and sacrificed the most in their drive to awaken, activate, and transform.

They brought necessary communication technology. Now, their work is done.

The second wave is emerging right now (approximately 2016-2025). In the children's global rising, and in the adults not chastising, we see the beginning of the end of the ugly old world show. Unlike in the past, in the 1960s and before, this wave will not be shut down.

The third wave will begin in as little as eight years from now (2026). As the second wave pushes back darkness, the third wave will struggle hardly at all. They will awaken in an emerging **Divine World Order**. They will assist and uplift the weak and the weary, the afflicted and unhinged. They will transform the planet. They herald Earth's glorious **graduation**.

Please note, graduation ceremonies are not held until all the old world is gone and all people achieve healing and **connection, victory and power**. By all means, enjoy emerging paradise, but do not forget the **promise**. Healing will need to be done,¹⁰ so embrace your **lightworker** role.

Old Energy Exposure

Like a lot of the archetypes near the end of this book, the old energy version of this archetype preserves much of the higher, deeper, meaning. In the old energies, this card represents "the accomplishment of the great work of transformation, which is finally completed in response to the summons of the Supernal" (Waite). Or at least, as Papus says, this is a step in the right direction. "The material world progresses one degree in its ascension towards God" (Papus).

This is certainly true. In the old energy, this is transformation in response to "the summons" (i.e. the Calling). The corruption, of course, lies in the 10 For the LP healing framework, see <https://www.lightningpath.org/heal/>.



fact that in the old energies, "transformation" is achieved through repression/sublimation of Self to the System (see the old energy Devil Card).

Corruption is also inserted when this card is named judgment. In the old energy version, the suggestion is simple. In the old energy the claim is that not everybody passes judgment and accomplishes "transformation." In the old energies, only a chosen few are **judged** strong, worthy, and able.

In the old energy, in the end, not everybody enjoys freedom, prosperity, and reward.

In the old energy, the masses are judged as "less than" and discarded as chaff. For their own good, they are confined by the **devil** and bound in slave servitude to the **wheel**.

Old Energy Dismissal

In the new energy, we put aside such foolish, judgmental, and elitist nonsense.

In the new energy, there are no tests of worthiness, no stipulations of exclusivity, no claims to superiority, and no dismissive rejection of the unworthy.

In the new energy, the rich do not lord it over the poor.

In the new energy, you don't have to bend over or bend the knee.

In the new energy, **the call** is issued to the entire **world**, no compromise required, and no strings attached.

In the new energy, everybody is called to transformation.

In the new energy, conditions are provided so that everyone can heal,

In the new energy, everyone can find their way home.

In the new energy, **lightworkers** are provided so that all may walk the path back to **power, connection** and **joy**.

Let us be crystal clear about this. In the new energy, the intent is collective awakening and graduation. In the new energy, it is utopia, and Shambhala for all, and not just the selfish and arrogant few.

Book of Slavery

This is Judgment, and this is Death
A Tower of Babble, all through your head.
For you're not worthy, and you're not Strong
And you're no Master, you're just a nob
A silly sheeple, a little ape,
A cone of silence, your soul to rape.
Why even bother, why even care.
You're just a pig in sinful snare.

So get thee gone, go back to work.
Your labor duties, must never shirk.
For God in Heaven, Darwin below.
Say buck it up, its time to sow.
So pick up tools, and bend your knee.
And follow close, your family tree.
For silent service, on slavery's row.
Your lot hereafter, in cosmic show.

Book of Power

This is Judgment, and this is Death
A Tower of Babble, crumbles in head.
We've found you worthy, and very Strong
You are a Master, cut with iron hob.
Those silly sheeple, those naked apes,
Kneel now before you, and feed you grapes.
Why even bother, why even care.
They're just some pigs, in brilliant snare.

So get your ass out, go back to work.
Your labor duties, must never shirk.
For God in Heaven, Darwin below.
Say buck it up, its time to sow.
So pick up tools, and bend your knee.
And follow close your family tree.
For eye on top, it always knows.
Your lot's to serve this System show.

Book of Keys

Child, this is the end.
This is where you did wend.
As you followed foot path.
That led you through the pass.

They said judgment would come.
A new day, a small crumb.
'nother year on the wheel.
You'd deserve it and kneel.

But you've passed through your fear,
And have made it to here.
Seen duality's crass.
See the plan is quite vast.

You have learned the bits fast.
Have seen Plan is quite vast.
Have put aside ancient caste.
Now the end's here at last.

So let chakras explode
Release your mother lode.
And let light from your sun
Flow and warm everyone.

And as energy flies,
And kundalini it rise,
And as lotus crown swan,
Guess we really have won.

So just give us three cheers,
You have made it to here.
The new world it now comes.
Cry out loud. Bang a drum.

We stand and welcome you in.
Can't control this big grin.
Drink a toast, hoist the mast.
Take the journey, at last!

Graduation (replaces The World)



New Energy Archetype

This is an ascension card.

This card speaks primarily to a collective, planetary, milestone, though there is individual significance as well.

After **The Plan** has been implemented and the **Great Work** finally complete, we exit the old energies, reunite self with Self, **empower**, transform, and finally join the cosmic family of Spirit. Another **Body** awakened, activated, and connected. Another **World** finally, and fully, transformed.

At an individual level, this is the individual rejoining the global, and cosmic, family of Spirit. For

the individual, this is **triumphant realization** of evolutionary and spiritual purpose.

At a collective level, this is realization of unity, purpose, and membership. Having implemented The Plan, having completed The Work, and having traveled a difficult evolutionary path, we reach the end of our journey. Tired and weary, but with the relief that comes after **sacrifice** and struggle, we stand up, rejoice, and remember.

From heaven, we descend as we enter a body.

On the evolutionary **wheel/world** we **sacrificed** self.

As **joyful masters** of creation, we struggled in darkness and duality.

In accordance with The Plan, we advance on the Path.

When the time is right, we respond to **the call**.

Putting aside duality and struggle, we gather our **strength**.

With **force** and **formation** in balance, we **initiate** awakening, **aligned** with highest Consciousness, and proceeded towards **victorious rebirth**. Putting aside greed and corruption, we **emancipate**, find **passage** and **connect**. **Realizing** highest truth, **victorious** and in full **power**, we embrace of shining **star**. As a **connected** and committed **lightworker**, we express glorious divinity and uplift the **world**.

Now, at the edge of eternity and the end of sapiens' time, we **graduate** with the glorious family of Spirit in longevity and university federation.

We initiate a new unfolding.

We ignite a new creation.

We embrace the **promise** realized.

We accept our welcome home.

Old Energy Exposure

In the old energy, this card, retains, for the most part, its pure meaning. A.E. Waite, who can be forgiven for misunderstanding a planetary process that many have completed before, says, “It represents... the perfection and end of the Cosmos, the secret which is within it, the rapture of the universe when it understands itself in God. It is further the state of the soul in the consciousness of Divine Vision, reflected from the self-knowing spirit.”

Crowley says this “comes at the end of all.”

For certain, this is true.

In the old energy, this archetype does reflect the perfection of humanity.

In the old energy, this is culmination of The Plan.

In the old energy, this is **reconnection** with Consciousness.

In the old energy, this is rapturous graduation.

The only difference between the old and new energy versions of this archetype is that, as illustrated on the card, in the old energy, this is an individual graduation.

In the old energy, this is available only to the blue-blood, “silver seed,” “good gene” chosen few.

The rest are kept behind as good slaves.

Take a look at the World. The message is clear. Here we see a single white Aryan figure, wrapped in joyful celebration. Here we see the culmination of old energy peregrination, especially when fueled



by pathology, greed, and hate.

Old Energy Dismissal

Of course, in the new energy, we reject this with the full might of Consciousness. In the new energy, the outcome is totally different. In the new energy, it is not a question of genes, talent, or being “chosen.” In the new energy, it is a simple question of timing.

When the Work is complete and the Plan is achieved, the question is not, “are you able?” The question is only “are you willing?”

Remember, there are no tests of worthiness, there is no requirement of submission.

There are no requirements for entry. There is nothing for you to prove. If you’re willing, simply put aside hatred and greed and come home.

Book of Slavery

My dear child, well, you made it here.
Will pip hurray, let's give a cheer.
Let's dance and clang the kitchen pan.
Let's twirl through this unholy land.

Cough, scoff... you silly little shit.
There is no place on ruler's ship.
You were rejected, heart in hand.
Because your strength could not withstand.

You think you could embrace the show?
You think you've talent, think there's flow?
My dear my dear, you've got to know.
There is a cosmic status quo.

But that's OK, this is no joke.
We'll let you live if you lift yoke.
And you go back to woe and Wheel.
And submit 'neath our ungoldy heel.

And don't be sad, don't think its bad.
It's just some rules from cosmic Dad.
It's Darwin's scientific fad.
Now go, before we get real mad.

Book of Power

Chela bell, you made it here.
Will pip hurray, let's give a cheer.
Let's dance and clang the kitchen pan.
Let's twirl through this unholy land.

Let's crack the whip, let's have a nip.
Let's dance with money from blue chip.
Let's skip and strip and smile and zip,
Let's cruise on private boating ship.

This is our show, embrace this flow!
My dear my dear, you've got to know.
There is no problem, don't ya know.
This is just cosmic status quo.

But that's OK, this is no joke.
We'll let you in if you wear cloak.
Let them go back to woe and wheel.
Let them submit beneath our heel.

And don't be sad, don't think its bad.
It's just some rules from cosmic Dad.
Just Darwin's scientific fad.
Now come on in, and don't feel sad.

Book of Keys

And God said, let There Be Light.

And after ten thousand years of your time.
After struggling through these deep rhmes.
After winning your hearts back from sin.
Cannot put away collective grin.

For you've slayed all the dragons in mind.
And you've grounded straight through your behind.
And Gaia has blessed with a kiss.
And for a moment you attained pure bliss!!

Only a moment? Only a second? That's fine.
Not too much 'til it's our neighbor's time.
Cannot christen Divine World you know,
Until most of us dance in the show.

So expand that bright light of pure bliss.
Give it out, give it up, make it stick.
Pass it on and make this world aware.
We are here and we've power to spare.

And don't worry, there's not much of a climb.
Just a few years 'til the end of old time.
And past that, well I've said, you should know.
Shambhala marks the end of old show.

