

# **The Triumph of Spirit Archetype System (TOSAS)**

by

Mike Sosteric

This is a draft.

Feedback welcome (mikes@athabascau.ca)

Did this help in some way?

Show your appreciation by [supporting the LP.](#)

We need your help to grow

[/LP/assets/monographs.](#)  
[/:LP/myths-and-symbols/monographs](#)  
[/AU/Sociology 420](#)  
[Version: 0.90 /](#)

## Table of Contents

The Triumph of Spirit Archetype System (TOSAS).....	1
Preface.....	8
PART ONE: THEORY.....	11
Introduction.....	12
Archetypes.....	12
Stories.....	14
Narratives.....	14
Master Narratives/Creation Templates.....	15
Stories.....	17
Narratives.....	22
Creation Templates.....	24
Final Theoretical Comments.....	27
The Ideological Significance of the Western Tarot.....	33
Archetypal Constellations.....	37
Fool in School Archetype.....	38
Justice, Judge and Punish/Reward/Redemption Archetype.....	41
Compliance and Submission Archetype.....	44
Binary Gender Archetype.....	47
Excuse and Justification Archetype.....	51
PART TWO: TRIUMPH OF SPIRIT ARCHETYPE SYSTEM....	57
Introduction.....	58
How to Read the Archetypes.....	61
Joyful Archetype.....	65
Master.....	71
Formation.....	76

Rebirth.....	82
Force.....	89
Realization.....	95
Victory.....	101
Strength.....	107
The Promise.....	113
Lightworker.....	119
World.....	125
Alignment.....	131
Sacrifice.....	137
Initiation.....	141
Emancipation.....	147
The Calling.....	153
The Star.....	159
Passage.....	165
Connection.....	169
Power.....	175
Activation.....	181
Graduation.....	188
The Complete TOSAS Narrative.....	193
References.....	194

...in any society, there are manifold relations of power which permeate, characterise and constitute the social body, and these relations of power cannot themselves be established, consolidated nor implemented without the production, accumulation, circulation and functioning of a discourse....We are subjected to the production of truth through power and we cannot exercise power except through the production of truth.

**Michel Foucault.** “Power/Knowledge: Selected Interviews....”

Symbol systems cannot simply be rejected, they must be replaced. Where there is no replacement, the mind will revert to familiar structures at times of crises, bafflement, or defeat.”

**Carol Christ** “The Spiral Dance.”

Emancipate yourself from mental slavery.

**Bob Marley**, Redemption Song.



# Preface

This book is a book about stories. More specifically, this book is about

- how stories shape and control our behaviour
- how stories are created from available narratives,
- how narratives are rooted in master narratives,
- how master narratives are derived from archetypes,
- how all this came to be and, most importantly,
- how we, as individuals and as a society, can replace old and toxic stories with bright and new shiny stories that uplift and emancipate rather than oppress and enslave.

This book provides a basic introduction to the [Triumph of Spirit Archetype System](#). The Triumph of Spirit Archetype System is set of twenty-two archetypes that together constitute a new [Master Narrative/Creation Template](#) that you can use to help you write new stories. Don't worry if this doesn't make much sense to you now, it will by the end of this book.

This book is divided into two sections. Section one introduces you

to a theory of how stories are created, what they are created from, and why. This includes an introduction of some key terms, like stories, narratives, archetypes, symbol factories, ideological institutions, and creation templates. Section one of this book also identifies the elite nature of this planet's extant creation template. The goal of section one is to make you aware of the oppressive nature of the elite creation template and its constituent archetypes so that you are motivated to move forward and remove the archetypes from your consciousness.

Section two of this book introduces the *Triumph of Spirit Archetype System* or just *TOSAS* for short. The TOSAS is one alternative to the dominant elite creation template. The goal of section two is to teach you the TOSAS archetypes so you can use these archetypes to replace the limiting and oppressive archetypes that currently percolate in your brain with uplifting and emancipating archetypes that **align** with who you truly are deep inside. If you are a storyteller, or if you aspire to be, the goal is also to encourage you (artists, musicians, writers, intellectuals, lay persons and such) to use the new TOSAS archetypes to create new stories and narratives that heal, emancipate, and empower rather than damage, enslave, and oppress.



## **PART ONE: THEORY**

# Introduction

This book is a book of master narratives or, as I prefer, [Creation Templates](#). It is a book that identifies the current oppressive and dominant creation template and it is a book that provides an emancipating and uplifting alternative to the current ancient and oppressive narrative. I call this alternative creation template the *Triumph of Spirit Archetype System* or just *TOSAS* for short. Before we get to a discussion of the TOSAS, we need to define a few basic concepts, like archetypes, stories, narratives, and master narratives.

## Archetypes

Let us start with archetypes, for our purposes an **archetype** is basically an idea that answers a big question or two. A big question is an existential question like “Who am I?” “Why am I here?” and “What is my purpose?” The answer an archetype provides is known as a [Positioning Statement](#) because it “positions” you within a cosmological/spiritual/religious/existential framework. An example should make this clear. If you ask yourself the big question, “Why am I here?” and your answer is that you are here to learn lessons or pay off karma, you have answered your question with what I call the [Fool in School](#) archetype. The Fool in School archetype, euphemized and made more palatable as some variant of the “hero’s

journey,” appears, as Joseph Campbell (2004) points out, in many different cultural narratives. The Fool in School archetype answers your big questions “who am I?” and “why am I here?” with the positioning statement that you are an immature, unevolved, or “sinful” spiritual child who has incarnated on this Earth to learn specific lessons, redeem yourself, and pay off your karmic debt.

I would hazard to say that virtually everybody reading these words will have been taught this archetype in one form or another, and many will believe it. This is because this archetype is everywhere. We can trace original versions of this archetype back to elites in Persian who modified the Zoroastrian prophecies to create the first Fool in School variant (Sosteric, 2024) From there, we can trace it through Islam (Akbar, 2020) into Judaism and Christianity where we find parents and priests using this archetype to teach children they are born with “original sin” and must consequently travel a redemptive life path on Earth. We also see this fool in school archetype in popular presentations of Hindu religion and in New Age teachings, both of which emphasize “life lessons” and “karma.” You also find it in Hollywood blockbusters where the “hero” (the protagonist) goes on a journey to learn life lessons and seek salvation through religious and secular forms of redemption. A classic example here is Luke Skywalker in the movie Star Wars, where Mark Hamill plays the hero who leaves home and goes on a journey where he battles evil and ultimately becomes a galactic hero

rewarded, along with his sidekick Han Solo, in a grand hero's celebration.

We should note out of the gate that archetypes are quite powerful, so powerful in fact Jung claimed they “influence and characterize whole nations and epochs of history.” (Jung, 1964, p. 76). From the foremost authority on archetypes, that's a pretty big statement.

## Stories

Beyond archetypes, we have **stories**. As Halverson et al. note (2011, p. 13), a story is a “particular sequence of related events that are situated in the past and recounted for rhetorical/ideological purposes.” I would refine this statement a bit more and say that a story is a sequence of related events, typically situated in the past, and told either to a) entertain, b) socialize, or c) indoctrinate, not necessarily in a mutually exclusive manner. Stories make use of archetypes, obviously. The movies *Star Wars: A New Hope* makes extensive use of the Fool in School, a.k.a. hero's journey, archetype.

## Narratives

Beyond stories, and at a higher level of organization and abstraction, we have narratives. A **narrative** is a “coherent system of interrelated...stories,” also told to entertain, socialize, or

indoctrinate. Whereas *Star Wars: A New Hope* is a story, the entire Star Wars universe, which these days includes book, movies and a wealth of streaming content, is a system of stories, a narrative. All the individual stories participate in this hugely influential narrative.

## Master Narratives/Creation Templates

Finally, we have master narratives. A **master narrative** is a transhistorical and often transnational (meaning these stories exist in many countries and in many periods) collection of ideas and archetypes that provide the *template* for the narratives and stories told in a specific culture or within a specific worldview (Halverson et al., 2011). For example, the Star Wars narrative is part of a larger [Zoroastrian Narrative](https://spiritwiki.lightningpath.org/index.php/Zoroastrian_Narrative)<sup>1</sup> (Sosteric, 2024). This Zoroastrian narrative includes archetypes about good versus evil, saviours, justice, judgment, punishment, and so on. It appears not only in Star Wars but in many other belief systems, like Christianity and even the New Age movement.

It should be obvious, but for emphasis, we should note that the archetypes contained in specific master narratives function as the basic building blocks which creatives like George Lucas use to create stories and narratives. To be clear, archetypes are contained in the transnational and transhistorical master narratives which

---

1 [https://spiritwiki.lightningpath.org/index.php/Zoroastrian\\_Narrative](https://spiritwiki.lightningpath.org/index.php/Zoroastrian_Narrative)

ultimately inform the stories and narratives created by artists the world over.

It should also be noted that a master narrative and the archetypes that make it up do not emerge randomly and agent-less out of the subterranean depths of human consciousnesses, as some suggest (Jung, 1964, 1980). To be clear, archetypes, and the stories, narratives, and master narratives that derive from them are created by human beings, specifically by what I [System Architects](#)<sup>2</sup> working in working in what I call [Symbol Factories](#) (Sosteric, 2020a, 2022).

The best example of how agents of consciousness create archetypes and narratives in symbol factories is the modern Tarot deck which, as explained in detail in the article “[A Sociology of Tarot](#)” (Sosteric, 2014), was designed during the Industrial Revolution by Freemasonic members of the [accumulating class](#) who used it to help socialize people into the emerging capitalist [Regime of Accumulation](#) (a.k.a. The System). The ideological narrative that the Freemason’s created was quite powerful and helped shape the emerging capitalist society.

We’ll talk about the Freemason’s tarot in more detail below. For now, note that the purpose of these ideologically impregnated master narratives is to control human thought and action and direct it towards support and reproduction of the extant regime of

---

2 [http://spiritwiki.lightningpath.org/index.php/System\\_Architect](http://spiritwiki.lightningpath.org/index.php/System_Architect)

accumulation. They do this by providing a “template” of narrative conventions to follow. Because of this, my preference is to use the term [Creation Template](#) to describe the transhistorical and transnational narratives. Although I do use the terms interchangeably, the term “creation template” is superior in my view to the term master narrative because it points not only to the agency involved in the design and implementation of master narratives but also the fact that these templates are designed to influence human thought and behaviour in a specific direction. They provide a template for thought and action. I realize these statements may be a lot to chew on out of the gate, so let us take a step back and look in a bit more detail at stories, narratives, and creation templates.

## Stories

As noted, a story is a sequence of related events, typically situated in the past, told either to a) entertain, b) socialize, or c) indoctrinate. What does all this mean specifically?

**Stories told to entertain** are stories told for simple amusement and pleasure. Although these exist, mostly on stand-up stages, most stories we see are told either to socialize or to indoctrinate.

**Stories told to socialize** are stories that parents, teachers, and other agents of socialization share to instruct children and

integrate/socialize them into the social fabric. As MacIntyre (2007, p. 216) notes, “It is through hearing stories ... that children learn or mislearn both what a child and what a parent is, what the cast of characters may be in the drama into which they have been born and what the ways of the world are.” I often told stories to my children about my own childhood, and the intent was always to convey some ethical, moral, cautionary, or educational tale. One story I told more than once to my children is the story about how one day, when I was in grade one, some creep in a car pulled up just outside the school playground fence, within eye and earshot of the school, and invited me to sit in the front seat and have some candy. I never entered the car, thanks entirely to my mother’s oft-repeated warning to “never get into a stranger’s car,” but I did tell this story to teach my children the importance of caution when dealing with strangers.

Note that stories told to entertain and socialize are typically told with the interests of the recipient at least partially in mind. Stories told to entertain are obviously about the recipient of the story. When you tell a story designed to entertain you are hoping to entertain the recipient. This is the same with stories told to socialize. When I told my children stories, I did it for no other reason than I wanted to help them navigate this world successfully. I have them in mind when I tell the story. This is not the same with stories told to indoctrinate. **Stories told to indoctrinate** are told not with the interests of the recipients in mind but with the interests of the teller in mind. Stories

told to indoctrinate are stories told to control thought and behaviour in a way that benefit some individual or group behind the particular story. To be clear, stories told to indoctrinate seek to manipulate the recipient. When a politician tells a story about Mexican rapists crossing the southern U.S. border, he is not telling that story to entertain or to educate, he is telling it to control human thought and behaviour, specifically to manipulate the racist elements of his base into voting for him in an election.

Stories told to indoctrinate are not neutral stories. They are designed specifically to create thought patterns and behaviours that fit you into the dominant [Regime of Accumulation](https://spiritwiki.lightningpath.org/index.php/Regime_of_Accumulation)<sup>3</sup> by making you think and act in a certain way. Specifically, stories told to indoctrinate get you to

- (a) accept the status quo and the violence and exploitation that goes along with it as if it is a God-given and natural part of the world.
- (b) remain docile and compliant in the face of even brutal oppression and
- (c) direct any actions you might take and any anger you might have in ways that divert systemic challenge and maintain and even reproduce the System.

---

3 [https://spiritwiki.lightningpath.org/index.php/Regime\\_of\\_Accumulation](https://spiritwiki.lightningpath.org/index.php/Regime_of_Accumulation)

Frantz Fanon points, generally, to how stories are used to create compliance, thereby making the job of maintaining the status quo easier and a lot less violent.

In capitalist societies, education, whether secular or religious, the teaching of moral reflexes handed down from father to son, the exemplary integrity of workers decorated after fifty years of loyal and faithful service, the fostering of love for harmony and wisdom, those aesthetic forms of respect for the status quo, instill in the exploited a mood of submission and inhibition which considerably eases the task of the agents of law and order. In capitalist countries, a multitude of sermonizers, counselors, and "confusion-mongers" intervene between the exploited and the authorities (Fanon, 1963, p. 4).

We might say that stories told to indoctrinate function to *colonize* you mentally, emotionally, and spiritually. How do stories do this? How do they chain you and control your behaviour? It is quite simple, really. Stories control your behaviour, stories colonize you, by providing answers to your big question (i.e., archetypes) that shape your thinking and consequently your behaviour. Specifically, stories colonize you by

1. controlling how you think about yourself (i.e., by providing

you with answers to big questions like “Who am I?”, “Why am I here?”, and “What is my purpose?”

2. controlling how you see the world (i.e., by providing answers to big questions about nature of reality and creation, and the purpose of existence), and
3. using the way you think and feel about yourself and the world to shape your behaviours and actions in ways that preserve The System.

For example, if you answer the big question “Why am I here” with a Darwinian “survival of the fittest” type answer that says the reason you exist is to struggle and compete, you might spend your entire life clawing your way up a capitalist hierarchy until you “triumphantly” arrive at the top of the capitalist food chain, where folks like Jeff, Bill, and Elon currently reside. Or, if you answer the question “Why am I here” with the idea that you are a spiritual child or an evolving soul here to learn lessons, and if you think of this planet as some kind of cosmic schoolhouse—in other words if you believe in the Fool in School archetype—then you see the world as some cosmic school house, yourself as a cosmic fool, and you spend your life “learning your lessons” so you can eventually graduate and move on. This belief will shape your behaviours in the world, often in the interests of the accumulating class. For example, with these

archetypes embedded in your mind, if your water is poisoned by toxic dumping you may not rise up and fight the corporation, you may simply chalk it up to karmic destiny or some sort of “life lesson” sent by God to forge or redeem your soul. Life lesson or karmic destiny does not matter; either way, this archetypal frame primes you to be passive in the face of criminal corporate malfeasance. Obviously, this passivity does not help *you* or the ones who love you much since you might get cancer and die from the toxins, but it does help the corporation and its actors who get away with your murder because your belief it is part of God’s plan helps drain your energy to fight.

## **Narratives**

As you know, a story is an individual and self-contained creative work designed to entertain, educate, or indoctrinate. A narrative is one step above the story. A narrative is a coherent system of interrelated stories designed to entertain, educate or indoctrinate an individual. The Christian Bible is a narrative that contains interrelated stories derived from several well-known archetypes, like the Good versus Evil, Judgment, Punishment, and Salvation archetypes, all of which we will go into more detail below. Similarly, both the Star Wars and the Marvel franchises also provide a narrative, a collection of coherent stories, which includes, curiously, familiar theological narratives of Good versus Evil,

Judgment, Punishment, and Salvation, that together form a powerful narrative.

Note that narratives do not have to be religious or contain religious archetypes. An example of a secular narrative is the narrative of the **American Dream**. This narrative provides an image of Americans, America, and how Americans are supposed to behave. According to this narrative, Americans are noble, brave, and free, America is the land of opportunity and all you have to do to succeed is sacrifice and work hard. Of course, this narrative does not reflect the reality of exploitation and inequality so characteristic of American society, but it does serve to manipulate and control American citizens. It encourages them to work hard for the capitalists who own American businesses, and it provides a ready-made excuse for poverty and inequality. If you do not “make it” in American society, it is not because the capitalist system exploits and impoverishes you, it is because you did not work hard enough.

Narratives control human thought and behaviour just like stories do, and for the same reasons. The only difference is that narratives are more powerful because the narrative’s appearance in many different stories makes the narrative’s archetypes seem deeply meaningful and even universal. If all the stories around you are part of the same narrative, if every story your parents tell you, every sermon you hear, and every Hollywood movie you see presents you with the

archetypes, it becomes easy to believe them. It also becomes very difficult to think critically about the narratives and archetypes, and it becomes difficult to conceive of alternative ways of thinking about the world. For example, if I told you that the archetypes of good versus evil, karma, judgment, punishment, and redemption were complete spiritual bullshit and that neither God nor Gaia has put you here to suffer, learn life lessons, clear karma, redeem yourself, or strive to survive, you might have a hard time considering this alternative narrative. In fact, you might even defend the “fool in school” idea. You may think of all the people (parents, teachers, Hollywood writers) who tell these stories and about all the “sacred” texts where these ideas are found. You may think that because the ideas are such a ubiquitous feature in the spiritual and cultural output of this world that they *must* be true. The fact that you learned them very early in life may make it even harder for you to consider anything else. You may become very defensive and resistant, and you may even put this book down in disgust. But try not to do that. The point here is not to make you feel bad; the point is to simply make you aware of the fact that narratives make archetypes and the messages they convey very powerful.

## **Creation Templates**

Stories are individual events and narratives are collections of stories. A master narrative is one step bigger than all that. A creation

template is a transhistorical (Halverson et al., 2011) and *transcultural* narrative that provides a template of archetypes that cultural creatives working from multiple [social class/ethnic/political/national] locations can use to write their stories and narratives. Archetypes do this by providing, via their answers to big questions, a view of self and a view of society that encourages and discourages certain behaviours.

Regardless of what some people might tell you, a creation template and the archetypes that constitute them do not emerge out of mystical evolutionary/archetypal realms, as psychologist C.G. Jung argued (Jung, 1964, 1980), or as an effort to explain the bad things that go on in the world (Burke, 1941a). Creation templates are designed by members of the accumulating class, agents of consciousness, to help change “the consciousness of the oppressed” in a way that helps them adapt to the system and makes them easier to dominate (Freire, 2005, p. 74). As Halverson et al. note, creation templates provide a powerful tool for controlling how people think about themselves and the world they live in, and for “motivating [and controlling action]” (Halverson et al., 2011, pp. 22–23). Creation templates created by elites are specifically designed to create hard-working, docile cogs who accept the status quo System as necessary, inevitable, and beneficial, and who joyfully plug themselves in for a lifetime of bitter exploitation.

It is not that hard to find evidence of elites creating and modifying creation templates for the purposes of manipulating and controlling their populations. The work of elites is obvious in the case of Hitler, who reworked extant creation templates into a form that served the interests of financial elites in Germany who would otherwise have been blamed for Germany's economic woes. Hitler created a narrative that "served maximum efficiency in deflecting the attention from the economic factors involved in modern conflict...by attacking "Jew finance" instead of *finance*" thereby stimulating an "enthusiastic movement that left 'Aryan' finance in control" (Burke, 1941b, p. 204).

Hitler's climb to power by manipulating the master narrative was neither unique nor original. In fact, it has been going on for thousands of years. You can see this elite activity quite clearly in the case of the Zoroastrian faith, in particular the sacred texts known as the Gathas. Although these Gathas are purportedly based on the mystical utterances of Zoroaster, the Gathas and the narrative they contain were actually constructed by empire-building elites of the Sassanian empire who used the cover of Zoroaster's mystical revelations, plus some "excessive bloodshed" (Boyce, 2001) to establish a Zoroastrian based creation template that still dominates this planet today (Sosteric, 2024). A more recent example of elites creating a master narrative designed to manipulate and control the population can be found in the Western Tarot which was created and

used by elite Freemasons as a creation template to indoctrinate not only their members but the wider public as well (Sosteric, 2014).

## Final Theoretical Comments

The Freemason's tarot is an excellent example of how agents of the accumulating class intentionally manipulate archetypes and symbols in order to create master narratives that support the system. Since it is so important, we shall be taking a closer look at the Freemason's Tarot as a creation template below. Before we get to that though, a few more comments need to be made.

**Number one**, this notion that elites construct a creation template for the purposes of controlling the thoughts and behaviours of the masses is problematic, not in the sense that it cannot be empirically demonstrated that they do this, but in the sense that no individual is going to buy into an elite narrative if they know that the narrative is constructed as a tool of manipulation and control. Thus the question becomes, how do elites get the masses to buy in? This occurs in a bait and switch process of "[sacralization](#)." Essentially, elites take their narrative constructions and portray them as "sacred" in some fashion. They do this by suggesting their narratives emerge from higher values and purposes (Halverson et al., 2011) and from ancient, transcendent, and divine sources of wisdom (Decker et al., 1996). They also use manipulative dramaturgical constructions to

create the emotive sense that the archetype(s) are sacred (Cicero & Cicero, 2004).

You can see this self-conscious sacralization process quite clearly in the construction of the Western Tarot, which was created by elite Freemasons and then sacrilized via a fabricated history, incestuous citation practices (citing one another's works as authorities), and false ascription. All these are, according to Dummett (1980, p. 124), rhetorical strategies designed to bolster authority of the tarot by attributing it to some authoritative source. In the case of the Tarot, the authoritative sources falsely ascribed are ancient philosophers, mythological figures, and ancient and secret Egyptian traditions,. Over and over, we find early masonically linked authors of tarot books and cards making outrageous claims about the deck, developing false lineages, attributing it to mythological forces, making ridiculous epistemological and ontological claims, and generally going to great lengths to ignore history and establish the spiritual authority of (i.e., sacrilize) the tarot.<sup>4</sup>

Rhetorical strategies and outright lies are not the only way elites sacralize their creation templates. Hollywood sacralizes the creation

---

<sup>4</sup> A representative sample of this charade is provided by Mathers (1888), a Freemason and one of the original members of the Hermetic Order of the Golden Dawn. One need only read two or three pages of the online text to see the absurdity. See <http://www.sacred-texts.com/tarot/mathers/index.htm> (retrieved April 3, 2013).

template for every new generation through the use of dramatic images, emotive musical scores, and compelling imagery all designed to build sympathetic emotional links to the archetypes presented in the story. One of the clearest and most powerful examples of how Hollywood sacrilizes an archetype by using dramatic images and music is the original Star Wars trilogy and the associated music of John Williams. Just look at Mark Hamill's character, Luke Skywalker and listen to his theme ([View on YouTube](#)).<sup>5</sup> Notice the emotive quality of John William's musical themes and the now iconic imagery of Luke looking longingly off into the distance. Luke is imagining his own hero's journey. This scene sacralizes the Fool's/Hero's narrative.

When I say that Hollywood manipulates your emotions to get you to buy into archetypes in the elite creation templates, I'm not saying anything that the elites do not say themselves. So-called esoteric brotherhoods use precisely these dramaturgical techniques to sacrilize their archetypes under the cloak of ideologically pregnant images, rituals, and dramas. Members of elite organizations understand the goal of drama and perfect in evoking emotions and controlling thought. As two magicians from the modern Order of the Golden Dawn admit, it is all about manipulating emotions to deliver "messages" to the initiates:

---

5 <https://www.youtube.com/watch?v=lgpXMGit4P8>

Such dramas were intended to captivate the senses and tug at the emotions as they retold the sacred legends and delivered important teachings to devout followers. Then, just as now, ritualists employed theatrical props, special effects, symbolism, gestures, speeches, and other elements of performance to have the greatest visual and emotive impact on their audience and to convey the desired message or catharsis of feeling (Cicero & Cicero, 2004, p. 108).

The second thing I want to say before closing up on theory is here that sacrilization and the distribution of narratives requires a lot of effort, so these templates are typically produced and distributed not by individuals alone but by individuals working within specialized institutions designed specifically to create, produce, and distribute a particular master narrative. There are two types of specialized institutions, what I call [Symbol Factories](#)<sup>6</sup> and [Ideological Institutions](#).<sup>7</sup> FYI

**Symbol Factories** are elite-funded esoteric and exoteric institutions, like the Catholic Church and Freemasonry, tasked with shaping human thought and controlling human behaviour by developing and propagating a creation template. Symbol factories,

---

6 [https://spiritwiki.lightningpath.org/index.php/Symbol\\_Factory](https://spiritwiki.lightningpath.org/index.php/Symbol_Factory)

7 [https://spiritwiki.lightningpath.org/index.php/Ideological\\_Institution](https://spiritwiki.lightningpath.org/index.php/Ideological_Institution)

at least the ones that operate these days, do not create *new* creation templates. Rather, as Hanegraaff (2013, p. 2013) notes, they endlessly recycle, reshape and repackage what is already there. They do this, basically, to update the ideas and make them palatable for a specific historical or cultural mindset, fitting them in as the economic and social-control needs of the elites changed. The medieval Christian Church pushed a version useful for medieval elites. Emerging Capitalist industrialists pushed a version of the master narrative that supported the development of the capitalist regime of accumulation (Weber, 1904). Islamic extremists push a version suitable for extremist elites (Halverson et al., 2011)6. Western secular cultural industries push a version suitable for Western economic elites and advanced global Capitalism. My article “A Sociology of Tarot” (Sosteric, 2014) documents the activities of one such symbol factory as it updates ancient archetypes.

Symbol factories are authoritative institutions. That is, they create and reshape creation templates as economic systems, zeitgeists, and mindsets change. **Ideological institutions** are less powerful than symbol factories. Ideological institutions do not recycle, reshape, and repackage creation templates, rather they specialize in **producing them, distributing them**, and in using them to **indoctrinate individuals** with the archetypes produced in symbol factories. Ideological institutions differ from symbol factories in as much as they do not claim creative authority to modify and produce

new stories and narratives, they simply use what has been provided by symbol factories. Any institution which produces stories rooted in the elite's creation template and then distributes these stories to the masses without modifying the basic archetypes is an ideological institution.<sup>8</sup> In this context, corporate media (Disney, MGM, commercial book and music publishers), schools, and universities function as ideological institutions. Even the family functions as one. Parents, having been indoctrinated with a creation template themselves by their parents (who in their turn, were indoctrinated with a creation template by their parents) impose the archetypes on each new generation both in their interactions with their children and by providing access to the products of this planet's ideological institutions. To be precise, parents perform the archetypes, speak the archetypes in archetypal stories, and even assault their children when they do not follow along. Parents also send their children to ideological institutions (church and school) to learn and absorb the extant creation template.

---

<sup>8</sup> I should note, there is overlap in the implementation of symbol factories and ideological institutions. The Catholic Church, particularly in its early days when it was first formed by Constantine, operated as a symbol factory by creating and then shaping the "sacred" Bible (Ehrman, 2007) into an elite creation template. The Catholic Church thus operates as an ideological institution as it indoctrinates the "lambs of God" in weekly Sunday mass. Freemasonry also operates as a Symbol Factory and ideological institution. When its members write, publish, and distribute information, it is operating as a symbol factory. When it gathers the brothers together for dramatic ritual and allegory, it is operating as an ideological institution indoctrinating each new generation of elites.

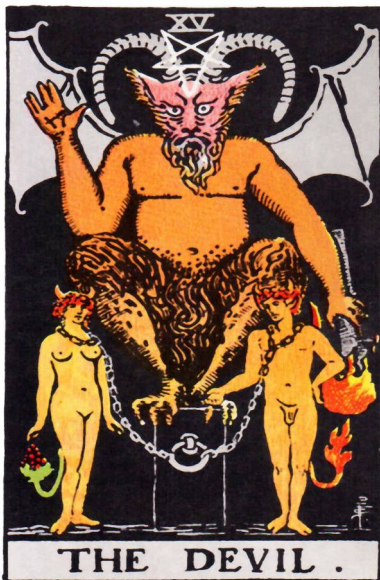
## **The Ideological Significance of the Western Tarot**

Creation templates are complicated and difficult to pin down. However, we can illustrate with the Western Tarot deck. The tarot deck provides a useful case study of how the accumulating class working in symbol factories create and deploy creation templates for the purpose of indoctrinating and controlling a population. The Western Tarot as created by the Freemasons provides a clear window into how creation templates are recycled, reshaped, repackaged, and distributed by symbol factories, and also how they are used within ideological institutions to indoctrinate.

The cards and associated commentaries are used to knit carefully designed archetypes into a “mystical” and spiritual sounding narrative suitable for modern sensibility. The tarot as creation template teaches individuals how to see themselves, how to see the world, and how to act in the world in ways supportive of the capitalist regime of accumulation.

I won't go into the details here, for that see my article “A Sociology of Tarot” (2014). Instead, a quick summary. Freemasons working in symbol factories (i.e., lodges) during the transition from the feudal to capitalist [Regime of Accumulation](#) took an ancient creation

template and “modernized” it in a way that would facilitate the transition from Feudalism to Industrial Capitalism. They did this by inscribing a formerly innocuous 78-card Italian deck of picture cards, the Tarot (Decker & Dummett, 2002) with their recycled, reshaped and repackaged archetypal narrative, and then sacralizing that deck. The narrative they developed, which we might call the *Fool’s Master Narrative* or just *Fool’s Narrative*, is used to not only indoctrinate their own members but also the general public, who are thus made into suitably compliant cogs via the imposition of cognitive and emotional chains.



Interestingly, this information is inscribed into the “esoteric” teachings of the tarot. As illustrated by the Devil Tarot card, the tarot enslaves you to [The System](#). The devil here represents forces that “constrain you and hold you back from being the best version of yourself.”(Biddy, 2020a). What kind of forces? Traditional commentaries typically gaslight you, claiming your “shadow,” your “habits” or your “addictions” are what hold you back, but arguably this card

represents the economic, political, and ideological forces that enslave you and turn you into compliant cogs.

Early Freemasons did a great job of modernizing and sacrilizing an ancient creation template. Indeed, their revision has been so successful at propagating the Fool's Narrative that the world's foremost Tarot scholars suggest that the Tarot has been the

...most successful propaganda campaign ever launched; not by a very long way the most important, but the most completely successful. An entire false history, and false interpretation, of the Tarot pack was concocted by occultists; and it is all but universally believed" (Decker et al., 1996, p. 27)

Decker et al. statements are not hyperbolic, particularly when you consider just how far the Tarot has penetrated into the consciousness of this planet at both a popular and scholarly level. At the popular level, the Tarot is a common tool used by many for divination, therapy, and even spiritual education. At the scholarly level, the Tarot is elevated into a tool for revealing deep psychological truths (Ouspensky, 1913, p. 2), as a way of interfacing "between human kind and the cosmos" (Jorgensen & Jorgensen, 1982, p. 381), as a tool for developing the "inner eye" (Noddings & Shore, 1984), and even as a way to tap into the knowledge contained in the unconscious (Bala, 2010). The Masonic Tarot even holds a respected

place in Jungian psychology where it is unironically seen as a way to connect with our deep inner selves, or even the entire cosmic expanse (Spiegelman, 1998, p. 93).

The Freemason's creation template is brilliant and incredibly effective at distributing the archetypes contained therein. Imagine you are a Tarot card reader using the Rider–Waite deck to offer advice to clients. The “spiritual” lessons you provide or the personalized advice you give will be framed with archetypes derived from a creation template designed to indoctrinate. Thus, you become an unwitting participant in the dissemination of the archetype and, ironically, your own indoctrination. The same goes for academics and psychologists who proffer the tarot as ancient spiritual/cosmic/divine wisdom. They do the job of the accumulating class by propagating their creation template.

You can learn a lot about the accumulating classes creation template by examining the archetypes and narrative of the Tarot deck. Remember we call the tarot narrative the Fool's Narrative or the Fool in School narrative. The analysis can run quite deep and since we are more focused on presenting a new creation template here, we won't go into too much detail. However, for context, I would like to introduce some of what I feel are the main archetypes in this Fool's Narrative and briefly discuss the chains that bind. We can start with the titular and central archetype, “The Fool” in School.

## Archetypal Constellations

As a final note, the archetypes listed below represent less individual cards and more [Archetypal Constellations](#). An archetypal constellation is a group of individual archetypes that work together to elaborate specific archetypal ideas. The binary-gender archetype, for example, is elaborated in several different cards, The Lover, The Empress, The Emperor, The High Priestess, and The Magician. Together these five cards constitute an archetypal constellation. Individual cards can appear in multiple constellations. The Magician, Judgment, and World archetype card all elaborate the Fool in School archetype.

With that said, let us take a quick look at a few of the key archetypes in the Fool in School narrative.

## Fool in School Archetype

The Fool in School archetype answers the [Big Questions](#) "Who am I" and "What is my purpose here?" The answer that it provides is that you are a fool in a school incarnated on this Earth on some sort of karmic, redemptive, evolutionary path designed to teach you (sometimes quite challenging) lessons.

He is a fool because only a simple soul has the innocent faith to undertake such a journey with all its hazards and pain... The Fool is unaware of the hardships he will face as he ventures out to learn the lessons of the world (Bunning, n.d.).



Your goal is to not argue with your lesson plan. You must learn that “Struggling against fated events is always ill-advised....” Accept karmic tutelage for you will learn valuable lessons....” (Hardison, n.d.).

This tutelage is made explicit in Freemasonry where “As a candidate we are a Fool that is full of energy, enthusiasm, and a desire to start our Masonic journey, yet we lack knowledge,

experience, and direction” (Marshall, 2015).

This archetype suggests you are an unrefined entity—a simple soul, potentially a bad child—journey through life so you can grow and redeem yourself. This archetype, which frames existence as a didactic experience of overcoming immaturity through cosmic/evolutionary tutelage subtly discourages resistance to suffering by presenting it as necessary for personal growth.

**Example:** A person poisoned by corporate pollution might interpret their hardship as a “life lesson” rather than challenging the system responsible, perpetuating passivity in the face of injustice. [Biddy Tarot](#) says it best

On The Fool Tarot card, a young man stands on the edge of a cliff, without a care in the world, as he sets out on a new adventure. He is gazing upwards toward the sky (and the Universe) and is seemingly unaware that he is about to skip off a precipice into the unknown. Over his shoulder rests a modest knapsack containing everything he needs – which isn’t much (let’s say he’s a minimalist). The white rose in his left hand represents his purity and innocence. And at his feet is a small white dog, representing loyalty and protection, that encourages him to charge forward and learn the lessons he came to learn. The mountains

behind The Fool symbolize the challenges yet to come. They are forever present, but The Fool doesn't care about them right now; he's more focused on starting his expedition (Brigit, 2020).

## Justice, Judge and Punish/Reward/Redemption Archetype

This archetype participates in systems of control by envisioning a system of ultimate judgment and justice, where actions of “the fool” are punished or rewarded by divine or universal forces. It encourages individuals to constantly monitor their own behaviour, to willingly submit to the system by internalizing the norms and values of the dominant ideology, norms typically presented as natural, true, and even cosmic.



Examine the Judgment card. This visual dramatizes a cosmic test: you are called to account. There is no avoiding it. The terrain (literal and metaphorical) makes evasion impossible.

As noted, this archetype promotes self-surveillance (think Foucault here) and self-compliance with norms and expectations under the threat of some form of legal or cosmic retribution. By positioning certain entities as arbiters of judgment, it reinforces existing power

structures.

**Example:** Individuals refrain from questioning authority out of fear of punishment or eternal damnation, or because they are promised some sort of reward if they're good boys and good girls. They do this even when authority perpetuates systemic harm. Consider the application of this archetype in an esoteric lodge where advancement depends on ones ability to comply with the "teachings.

[From Biddy Tarot...](#)

The judgement card shows naked men, women, and children rising from their graves, arms outspread and looking up into the sky. Above, Archangel Gabriel – the Messenger of God – blows his trumpet. The people respond to his call, ready to be judged and to find out if they will be accepted into the heavens [the lodge, the next level, the private club etc.] or not. In the background is an extensive mountain range, signifying the insurmountable obstacles and the impossibility of avoiding judgment (Biddy, 2020c).

Or

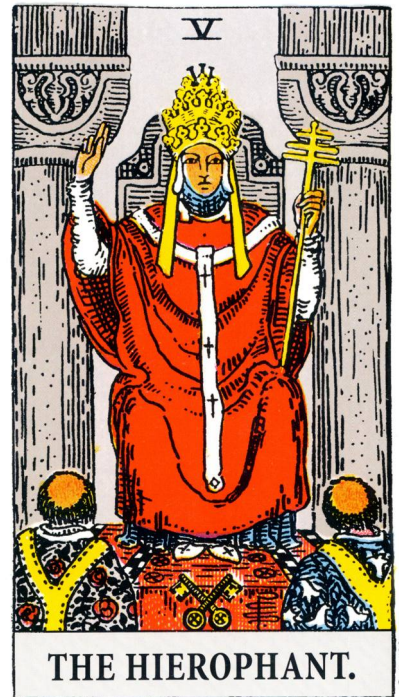
The populace responds to his appeal, eager to be assessed and learn whether or not they will enter the heavenly realms. A large mountain range in the

distance represents the overwhelming challenges and difficulties of avoiding judgement. They are set to encounter their creator, have the consequences of their deeds assessed, and learn whether they will live the remainder of eternity either in heaven or in hell. (Astrotalk, n.d.)

## Compliance and Submission Archetype

This archetype glorifies submission to hierarchical power, “higher wisdom,” and authority in general. This archetype positions submission and obedience as a moral imperative. It fosters docility and discourages critical engagement with oppressive systems which always rely on rigid authority structures to function. The archetypal message, present in the hierophant, Judgement, Emperor, Justice, and Strength cards, is clear—submit.

For example, the Emperor embodies patriarchal authority. He is “chief among the mighty,” the “single powerful patriarchal figures,” the ruler of civilizations”(Dustin, 2020) who you must, of course, submit it.



The Hierophant also embodies compliance and submission, quite clearly in fact. Tarot commentators typically indicate that upright, it represents spiritual wisdom (which you should submit to),<sup>9</sup> religious

<sup>9</sup> Interestingly, the elites run esoteric institutions that are by-invite-only. These institutions (Freemasonry, Golden Dawn, Skull and Bones) always purport to offer access to deep spiritual knowledge and truths.

institutions, and societal norms, often presenting this compliance as virtuous. Reversed, it signifies rebellion against conformity or questioning authority.

The bald spots on the heads of the kneeling men are traditional shavings that medieval priests and monks would make to show their submission to the authority of the Pope. As the priests submit to the authority of the Hierophant, so to does the Hierophant submit to the authority of the very office he holds

From [Tarot.com](https://www.tarot.com)

[The Hierophant](#) is like a messenger from the heavens. He is experienced in spirituality and guidance, and his job is to bring these lessons down to us here in the real world. When The Hierophant comes up in your Tarot reading, you're encouraged to *follow the rules*, and to find a spiritual perspective on your current situation.

Or

The bald spots on the heads of the kneeling men are traditional shavings that medieval priests and monks would make to show their submission to the authority of the Pope. As the priests submit to the authority of

the Hierophant, so to does the Hierophant submit to the authority of the very office he holds (Keen, n.d.).

The possibility severe consequences for failure to submit and comply are encoded in Justice, Judgment, and other major and minor arcana.

## Binary Gender Archetype

At its core, this archetype operates on the principle of dividing human traits and roles into two distinct, oppositional categories. Put another way, this archetype essentializes gender and normalizes heterosexuality: It presents masculine and feminine traits as innate and immutable, rather than socially constructed. It pushes a complementarity myth: It frames these binary categories as natural, divine, and essential, implying that deviation disrupts a cosmic balance. It assigns stereotypical traits to each gender *and* positions these genders hierarchically, with “masculine energy” subtly or overtly positioned as superior or more valuable. In these scheme, men are active, empowered, breadwinners while women are passive, receptive, homemakers.<sup>10</sup>



The binary gender archetype is expressed in several major arcana and through out the tarot deck. The High Priestess, for example, and the Empress both embody archetypes of divine “feminine

<sup>10</sup> Stark examples are provided for The Empress (<https://www.learntarot.com/maj03.htm>) and The Emperor (<https://www.learntarot.com/maj04.htm>) cards at LearnTarot.com

energy,” representing intuition, passivity, withdrawal, nurturing, and creation. The “passive feminine principle.” According to one website, “The High Priestess does not strive for action, she observes and perceives” (Anon, 2021), while the Magician and the Emperor represent divine masculine energy, associated with action, authority, and structure.

For many tarotists, The Emperor represents one side of the duality of masculine and feminine, his other half is The Empress. These masculine and feminine energies aren't necessarily gendered...In the Tarot, this card speaks to that masculine side of our energies; the directive, structured, logical half of our creative force, while The Empress is the half that nurtures, flows, and feeds our creative force with gentle love.(Backyard Banshee, n.d.)

Notably, this binary duality is portrayed as essential for balance and harmony in the universe. Look at The Lovers card. The card provides an image of divine sanction. Binary gender is visually sanctified in this card.

Adam represents our consciousness, earthly nature, and rational mind. He looks to Eve for guidance. Eve represents the unconscious and life-force itself; she

looks up to the angel. She seeks out the guidance of the super-conscious that Raphael represents (Fine, n.d.)

Or

The six-pointed star, commonly referred to as the Star of David, is described in this book as a synthesis of masculine and feminine elements. The upright and reversed triangles that come together to form a six-pointed star represent this balance of the sexes (Anytime Astro, n.d.).

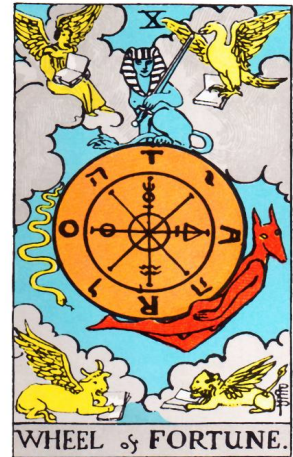
You might ask the question here, “So what?” What exactly is the issue with binary gender? The issue is that binary gender is not a thing. Like the spectrum of light, nature is a continuum. The problem is, binary gender is constructed to serve the accumulating class. It serves the accumulating class by, for example, ensuring a compliant, docile, submissive, and inexpensive “reproductive labour force.” Moms popping out and raising the next generation of workers in the kitchen for free, like it used to be, back in the early days of Capitalism. It also serves the ruling class by creating unending generations of labours/breadwinners of all classes, ready and willing to submit to the work-a-day grind.

When you are in tune with the energy of The Empress, you will naturally take on her mothering nature. You

feel a strong urge to nurture and care for others, from a place of loving compassion and support (Biddy, 2020b).

## Excuse and Justification Archetype

This archetype legitimizes inequality and oppression by framing them as natural, deserved, or divinely mandated, rather than as products of human-made systems. It gaslights and shifts responsibility for societal problems onto individuals, obscuring systemic causes. It also holds out hope that even though you might be poor and downtrodden now, eventually you'll occupy a higher place on the wheel (every American's dream, all dogs go to heaven). By presenting the status quo as justified, it undermines efforts for social reform and provides ideological cover for systemic injustices. **Example:** Poverty is justified as the result of fortune, karmic luck, or individual failure rather than systemic inequality.



The Wheel of Fortune reminds you that the wheel is always turning and life is in a state of constant change. If you're going through a difficult time rest assured that it will get better from here (Biddy, 2020d).

This archetype breeds passivity. Things not going good for you or your world? There's nothing you need to do. Just sit back and relax.

It will all work itself out in the end.

Foundationally, this card is about the impact of fate on all our lives. Sometimes we are on top and everything is going well for us. Other times, we find ourselves at the bottom of the wheel, suffering in misfortune.(Peters, 2025)

Even if you wanted to do something about it, what's the point.

The Wheel of Fortune turns evermore, seemingly to communicate that life is made up of both good and bad times, and that the cycle is one that we cannot control. It is something that is subjected to both kings and workers, and that nobody on earth can avoid what is fated. When you have good moments in your life, make sure that you enjoy to the fullest, for what comes up must always go down. The same is true in reverse – when you are in a bad situation, things will eventually become better again (Labyrinthos, 2017).

In the end though, whatever good or bad things happen, it's all your fault because. The result is legitimate because the wheel is karmic (Anon, n.d.) and it always “gives you what you need” (Esoteric Hut, 2021).

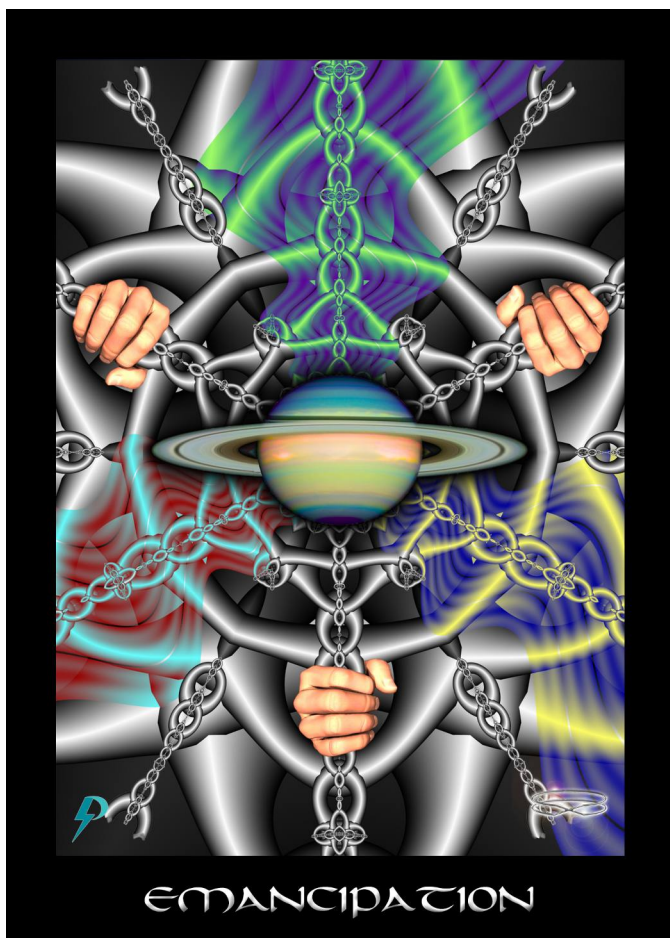
## **Conclusion**

That's all I have to say regarding archetypes from the Freemason's Tarot, at least here. To summarize, the master narrative formed by these archetypal constellations presents a worldview designed to maintain social order and justify existing power structures. It portrays life as a divinely ordained binary journey where individuals, cast as "fools," must learn lessons and overcome challenges to grow spiritually. This narrative encourages self-surveillance and compliance with societal norms through the threat of ultimate judgment and the promise of rewards. It glorifies submission to authority as a moral imperative, discouraging critical engagement with oppressive systems. The binary gender archetype reinforces traditional roles and hierarchies, particularly in reproductive labour. Finally, the narrative legitimizes inequality and oppression by framing them as natural, deserved, or divinely mandated, shifting responsibility for societal problems onto individuals and obscuring systemic causes. This master narrative thus serves, I would argue, to create docile, compliant individuals who accept their place in the social hierarchy, resist challenging the status quo, and perpetuate existing power dynamics, all while believing they are on a path of personal, spiritual, or evolutionary growth.

Here is a quick summary of the narrative as I see it.

You are a fool in school here to learn important life lessons and grow spiritually. Your purpose is to journey through life's challenges, overcoming your inherent immaturity, imperfections, and weaknesses. You are subject to divine/legal judgment based on how well you learn these lessons and adhere to the natural order. Your role is to submit to higher wisdom and authority, recognizing that the existing hierarchies and outcomes are divinely ordained for cosmic balance. As a man or woman, you have specific, complementary traits and responsibilities that contribute to societal harmony. Women should be passive nurtures. Men should be active breadwinners. Your position in life, whether privileged or disadvantaged, is the result of your own actions, karmic destiny, or divine will. You are here to accept your place in the grand scheme, understanding that life's ups and downs are part of a greater plan. Your task is not to question or challenge the system, but to focus on your personal growth within it, trusting that by fulfilling your designated role and learning your lessons, the wheel of karma will turn you will eventually achieve spiritual advancement, a better position in life, and perhaps entry into heaven.

We'll talk a lot more about these archetypes later, in future resources; at this point you should have a basic view of the field. You know about creation templates, you know that the accumulating class uses them to further their accumulation agenda by creating and updating them in symbol factories and distributing them through ideological institutions. You should have a sense of their narrative, a good sense of the crises we face, and understand clearly that we need to replace the old creation template with something new as quickly and cleanly as possible. The question now becomes, with what? The answer to that question is simple.. With another creation template. It is to an explication of this alternative narrative/creation template prototype that we now turn our attention to.



## **PART TWO: TRIUMPH OF SPIRIT ARCHETYPE SYSTEM**

# Introduction

In the first part of this book and in previous articles (Sosteric, 2020a, 2020b, 2020b) we learned about the elite creation template and the archetypes which are used to write the narratives that colonize our consciousness, influence our behaviours, and insert us like cogs into The System. I have to say, the elite creation template in all its various forms has inflicted profound psychological, emotional, economic, and spiritual damage on humanity, as well as devastating ecological consequences on the planet. By design, it has perpetuated elitism, sexism, patriarchy, and capitalism. It has caused ubiquitous psychological fragmentation and spiritual disconnection. It has created populations that are easily manipulated and controlled. Under its influence, humanity has been coerced into wars, programmed into rampant consumerism, and driven to sacrifice future generations on the altar of power and greed. Now, as we cast our eyes out at the world that surrounds, as we perceive the polycrises that threatens to end us all,



we can see, there's no future in these old archetypes. They have to be replaced. The question is, how?

In this second part of this book, I introduce the **Triumph of Spirit Archetype System (TOSAS)**. The TOSAS is my personal attempt to construct a new creation template. Unlike previous suggestions, such as Halverson, Corman, & Goodall's (2011) suggestion to "turn the master narratives against the elites," or Griffin's (1988) proposal to vaguely "reenchant" science, the TOSAS provides a substantive and transformative framework, a creation template, which we can use, if we so choose, to tell ourselves new stories, stories that foster healing and connection in all people, and not greed, power, and competition.

I'm not gonna say anything more at this point except to say that the template provided here challenges dominant materialist, scientific, religious, and atheist frames. Some people might find that a bit uncomfortable and that's fine. If so, remember this: we're just telling ourselves stories here. It has never really mattered whether the stories are true or not. After all, spider men, Jedi nights, and refugees from planet Krypton do not exist. But the truth of the stories is not the point. It only matters the kind of people and the kind of societies our stories inspire us to be. It only matters that roles that we are "hailed" into (Althusser, 1971). Given the general state of planet, I think we need to inspire to aspire a little higher and

we're gonna need new stories to for that. This is just one offering.  
May there be many more.

## How to Read the Archetypes

As mentioned earlier, the **Triumph of Spirit Archetype System (TOSAS)** provides a set of archetypes that can be used to replace the extant master narrative. Whether applied individually or in combination, these archetypes are tools for reprogramming your own thinking and for creating progressive, grassroots cultural works aimed at weakening and ultimately replacing the elite creation template. To begin using the archetype cards, simply study the imagery and explore the accompanying commentary provided for each.

Each commentary is structured into several sections to guide your understanding and use:

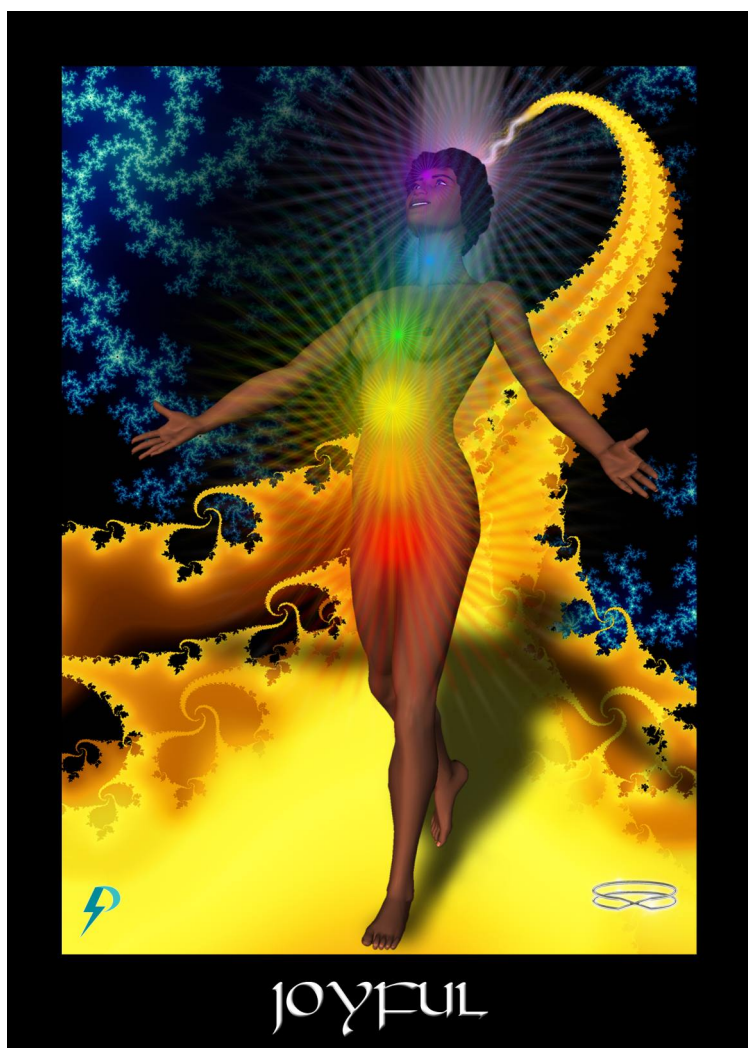
1. **Key Phrase:** This offers an initial framing of the archetype and provides a concise mnemonic phrase to help you recall the archetype's core essence.
2. **Symbolism:** This section delves into the imagery on the card, explaining its meaning and connecting it to the broader TOSAS narrative.
3. **TOSAS Narrative:** Here, you'll find an elaboration of the archetype, placed in the context of the larger TOSAS

narrative/creation template being constructed.

4. **Bolded Words:** Bolded words in the commentary highlight connections to other TOSAS archetypes or key concepts. For example, a statement like “You are **joyful**, **masterful**, and **powerful**” references three separate archetypes, which you’ll want to familiarize yourself with. Reading through all the archetypes at least once will help you grasp the system's interconnected nature. Ultimately, you should read through the elaborations several times to decode the full meaning.
5. **Cultural References:** This section offers examples of how progressive narratives can be built upon these or similar archetypes. Currently, it’s in its early stages and will grow as new examples come to light. If you have examples you’d like to share, feel free to submit them for consideration by emailing [mikes@athabascau.ca](mailto:mikes@athabascau.ca).

The TOSAS archetypes are more than just theoretical constructs, they are actionable tools for transformation. By engaging with them thoughtfully, you can create stories, art, or cultural movements that challenge and replace harmful narratives with ones that heal, empower, and connect.





# Joyful Archetype

**Key Phrase:** I Am Joyful in Manifestation.

**Symbolism:** A Joyful soul is shown walking a yellow brick road into manifestation and incarnation into a body. The road emerges from the crown [chakra] of the figure, indicating that the individual soul constructs its own path into incarnation, but not necessarily in isolation. A beam of light represents a strong [Connection](#) to **Source Consciousness**. Seven chakras support the body (the [Physical Unit](#)) (and [The Body](#)). The fractal blue waters of creation support the figure and the road. Before the figure lies the vast untapped potential of creation. Connected to Source, to the [Fabric of Consciousness](#), this is an emissary on a joyful creative mission.

**TOSAS Narrative:** This archetype answers the big questions “Who am I?”, “Where am I going?” and “What is my purpose?” Understand, you are **not** a “fool in school” here to learn karmic lessons nor are you an evolving ape (though you live in a physical unit that *is* evolving). You are a **powerful, joyful, master** and **lightworker** on a mission to create wonderful playgrounds for Spirit. In other words, you are here to complete the [Great Work](#). Embracing light, life, and connection, you make a **sacrifice** and descend, along with all others, into physical creation in order to

create, uplift, and enjoy. However, you are probably not aware of this fact just yet because, like all others who enter into manifestation under elite conditions on this Earth, you are as yet subject to the limitations of the [Blindfold](#).<sup>11</sup> Note, these limitations can be overcome anytime you wish. Simply set your intent to move forward, heal and **connect**.

At the highest and most aligned levels, this archetype depicts either the beginning of your creative journey as you incarnate into a physical body to accomplish the [Great Work](#) or the individual and collective journey of **initiation, emancipation, empowerment, and reconnection** that begins when you, when we all, finally respond to **the call**. As the world responds, the elite narrative will dissipate, the people will remember their **mastery** and **power**, and collectively we will transform first our lives, then our communities, and finally **the world**.

At a mundane level, this is your path as you work to create a good life first within the limitations imposed by an exploitative system, and later with the nurturing support provided by an empowered and **graduated world**. It might be a struggle now, but maintain hope. The global **call** has gone out and the final **awakening** has begun.

---

<sup>11</sup> <https://spiritwiki.lightningpath.org/index.php/Blindfold>

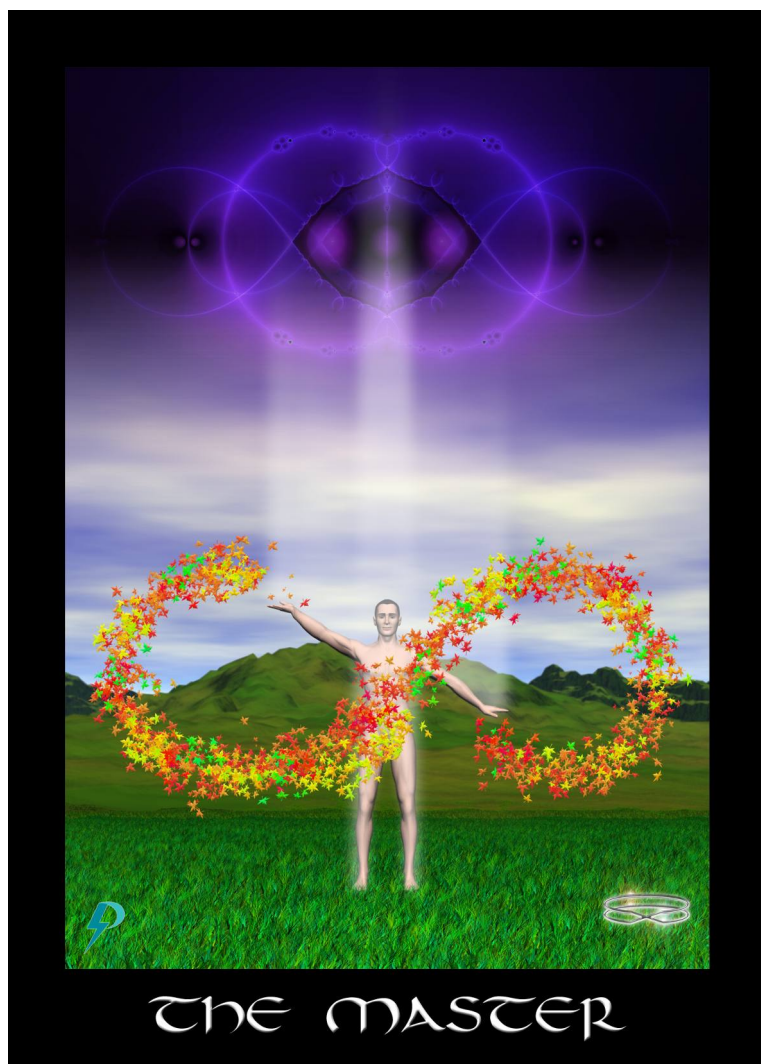
## Cultural References

- **I want you to have it all** – Jason Mraz song – *I Want You to Have It All* aligns seamlessly with the **Joyful Archetype**, radiating positivity, hope, and the celebration of life’s vast creative potential. The song’s lyrics express heartfelt wishes for abundance, happiness, and personal empowerment, echoing the archetype’s emphasis on joyful manifestation and the connection to Source Consciousness. Mraz encourages listeners to embrace life’s opportunities with generosity and confidence, embodying the spirit of a “spiritual emissary on a creative mission.” <https://www.youtube.com/watch?v=BFkTu8Y1KLs> –
- **Laughter** – Bruce Cockburn – *Laughter* reflects aspects of the **Joyful Archetype**, particularly its embrace of life’s complexities with humour, love, and resilience. The song’s reflective yet playful tone celebrates the human capacity to find lightness amid challenges, symbolizing the joy of creative manifestation and the ability to walk one’s unique path with authenticity and grace. Each verse acknowledges both the absurdities and the profound beauty of life, inviting listeners to laugh in recognition of shared struggles and triumphs. “tapping our feet to an ancient tune,” awakening [\[https://open.spotify.com/track/1rGaJkf9dMYjyyFTSX5Kp](https://open.spotify.com/track/1rGaJkf9dMYjyyFTSX5Kp)

[z?si=85a2d1962b904be4\]](https://www.youtube.com/watch?v=1LsabQV0Yjk&list=RD0VU5902u_o4)

- In the children’s cartoon [Stephen Universe](#), Stephen is created by his Mother in order to joyfully experience life. This is made explicit in the show finale, S5E28 in the song lyrics “Cause we believe in peace, we are here for fun. If you’re here then let’s not fight ‘cause we’ve already won.”
- **Budding Trees** – Nahko and Medicine for the People – *Budding Trees* aligns beautifully with the **Joyful Archetype**, capturing the essence of manifestation, connection, and the creative journey of bringing dreams into reality. The song reflects an awakening to the interconnectedness of life, as seen in lines like “In the moon of the budding trees, I was gifted new eyes to see.” This mirrors the archetype's focus on walking a path of joy and creativity, guided by connection to Source and supported by the limitless potential of creation.  
[\[https://www.youtube.com/watch?v=1LsabQV0Yjk&list=RD0VU5902u\\_o4\]](https://www.youtube.com/watch?v=1LsabQV0Yjk&list=RD0VU5902u_o4)





# Master

**Key Phrase:** There is a master within.

**Symbolism:** The physical unit is mature, healthy, and strong. A lemniscate connects your [Spiritual Ego](#) above to your [Bodily Ego](#) below. This archetype represents a strong [connection](#). The figure stands tall, [aligned](#), confident and proud. Palm pointed up, palm pointed down, “As above in consciousness, so below in matter. This one implements the [Divine Plan](#) and completes the [Great Work](#). Highest Self united with self. Bodily Ego merged with Spiritual Ego and [aligned](#). That which is in Consciousness above reflected perfectly in matter below. The Soul has arrived in an open, receptive, healthy, and mature [Physical Unit](#). United as one, they manifest physical creation in the direction of light, love, and magic.

**TOSAS Narrative:** The **master** archetype is an extension of the **joyful** archetype. This archetype provides an elaboration on the big questions “Who am I” and “Why am I here.” As you learned with the Joyful archetype, you are here to complete the [Great Work](#) so that the planet may finally **graduate**. As you learn with this archetype, you are not a newbie in this game. You are no passive receptacle. You are no mere vessel. You are no empty conduit. You are no simple servant. You are no passive lamb. You are no fallen

angel. You are no descended ape. You are not here to “learn your lessons” or prove your worth. You are not here to “find your place” in the castes and classes of this world. On the contrary, you are an “old soul,” as are we all. You have incarnated many times before in order to prepare for this moment. You have gained much experience on your journeys and as a consequence you are a true master. Never doubt that you have what it takes to heal and transform yourself, your society, and this world.

At the highest levels, this archetype represents the spiritual master that is your soul/Highest Self/Atman. This is not a karmic reject or a descended ape. This is a spark that is older than this universe. This is a soul that has grown powerful while working with the fires of creation. Your **joyful** goal now is to remember and reconnect so you can transform this planet and save the world.

At a mundane level, this is your talent, your expertise, your superpower. In order to be happy and whole, you must recognize, embrace, and develop it.

## Cultural References

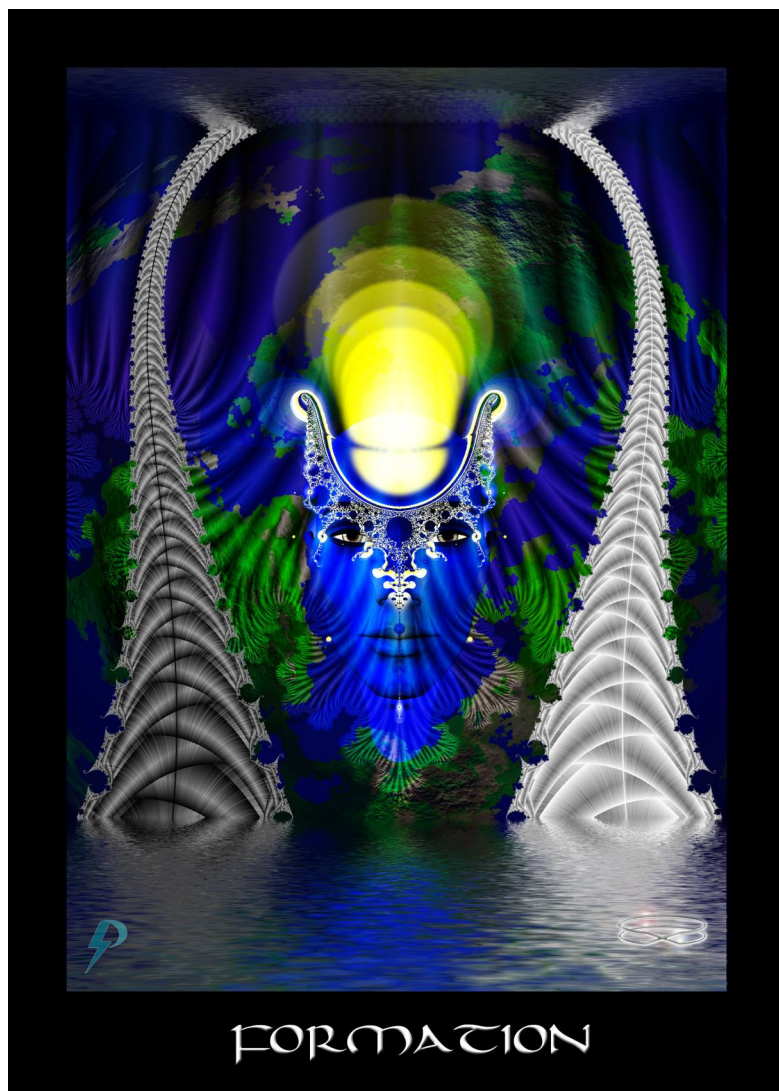
- **The Greatest** – by Sia – The Greatest resonates deeply with the **Master Archetype**, as it encapsulates themes of resilience, self-mastery, and the recognition of one's

inherent power and purpose. This song embodies the confidence and power of the joyful master archetype, with

intimations of the calling and emancipation archetypes.

[<https://www.youtube.com/watch?v=GKSRYLdjsPA>]

- **Hall of Fame** – by The Script ft. will.i.am – Celebrates the potential for greatness within everyone, direct reference to the **master** archetype. The repeated references to being "the greatest" or "a champion" embody the archetype's representation of confidence, strength, and alignment with higher purpose. The lyrics "You can talk to God, go bangin' on his door" suggest a direct connection with higher consciousness, inspiring listeners to align their actions with their inner purpose, manifesting their potential in service of something greater. [<https://www.youtube.com/watch?v=mk48xRzuNvA>]
- **Budding Trees** – Nahko and Medicine for the People – joyful mastery [[https://www.youtube.com/watch?v=1LsabQV0Yjk&list=RD0VU5902u\\_o4](https://www.youtube.com/watch?v=1LsabQV0Yjk&list=RD0VU5902u_o4)]



# Formation

**Key Phrase:** Consciousness forms.

**Symbolism:** A human face sits betwixt the pillars of **force** and **formation** (also known as yang and yin). The sun of higher Consciousness shines fully and brightly, taking the shape of the container of mind before it manifests in the material waters below *As above in Consciousness, so below in matter*. The message is clear. Through the archetypes and ideas in our mind, we form creation. From the waters above to the water below, and into the ground/Malkuth of Earth, we use energy shaped by ideas to create the **world** as we imagine it in our minds. Note, this archetype shows force and formation used in balance. Through the **formative** (yin) power of ideas, we shape and direct the wilful **force** (energy/power) of Consciousness.

**TOSAS Narrative:** This archetype, in conjunction with the **Force** archetype, answers a big question and that is, “How does Consciousness create?” The answer is that Consciousness creates through the application of force tempered and shaped by formation. The equation here is simple: will as **force** combines with will as **formation** to move this **world**, and all of creation, forward. This principle is encapsulated in Creation’s Equation.

## Creation's Equation

$$\text{Force} + \text{Formation} = \text{Creation}$$

The **force** archetypes reminds us of the significance and importance of *will* as pure force.

The **formation** archetype reminds us of the significance and importance of *will* as directing nurturing, encompassing, direction (formation) of force.

At the highest and most aligned levels, this archetype represents our creative desire, ambition, and the intent of our **God/Consciousness/Highest Self**, formalized into archetypes that direct the flows of creation.

At more mundane levels, this archetype represents the creation template through which consciousness flows on its way to manifest physical reality. As we know, elites have co-opted the power of the archetypes to construct a creation template that serves their own greedy and selfish ends.

Remember, *the archetypes you use to organize your thinking influence your physical reality*. Do you feel yourself to be a fool in school? Do you think you are merely an ape? Do you think you are here to learn lessons? Do you think you are being punished for sins?

Think again. Change your ideas and change yourself. Change your ideas and change the **world**. Remember, you are a **joyful master**. You are a cosmic **victor**. You are **called** to awaken. You have the **power** to activate. You have the ability to **connect**. Embrace purpose and honour your **sacrifice**. Ascend and **graduate** this **world**.

## Cultural References

- Budding Trees – Nahko and Medicine for the People – joyful mastery [[https://www.youtube.com/watch?v=1LsabQV0Yjk&list=RD0VU5902u\\_o4](https://www.youtube.com/watch?v=1LsabQV0Yjk&list=RD0VU5902u_o4)] – power of visualization/formation
- "Inception" (2010): The entire premise of the film revolves around the idea that consciousness can shape reality within dreams, reflecting the Formation archetype's concept of mind shaping matter.
- "Imagine" by John Lennon: The lyrics encourage listeners to envision a different world, embodying the idea that consciousness can shape reality.
- Indigenous narratives often emphasize the role of collective and individual intention in shaping the environment. For

example, the Australian Aboriginal concept of the Dreamtime reflects how ancestral spirits shaped the world through thought and action.

- Tolkien's creation myth in *The Silmarillion* describes how the world was sung into existence by the Ainur, representing a harmonious formation of force (the music) into structured reality.
- Abraham Maslow's idea of a self-actualized society (Eupsychia) emphasizes individuals aligning their personal visions (formation) with collective action (force) to create a healthy society. This aligns with the archetype's principles.
- **The Taoist Yin–Yang Philosophy:** The interplay of yin (formation) and yang (force) illustrates the necessity of balance for harmonious creation.





REBIRTH

# Rebirth

**Key Phrase:** It is time for the rebirth of your Self.

**Symbolism:** Gaia/Mother Earth/Aataentsic is giving birth: fecundity; a nurturing space. All of creation embraced and supported. Water, the fountain of creation, life, and growth. Life grows freely when water is present. The planet upon which we live symbolizes the support of our creation. Gaia works with the energy from the Sun to create a biosphere capable of supporting life. Manifestation and creation spring forth. Without Gaia, there is no life. Without nurturing and supportive environments, there is no healing and connection. This should be an obvious truth.

**TOSAS Narrative:** In the TOSAS narrative, this archetype represents creation, birth, and rebirth. This is the *birth* of a new body and the incarnation of a soul into that body. This is also the spiritual, emotional, or psychological *rebirth* that arises when one heals from the damage done by **Toxic Socialization** and reconnects to the **powerful** and **joyful master** within. Understand, this is a rebirth not because of some deep esoteric or spiritual necessity. We are not on some fool's journey of redemption. This rebirth is required because the violence of Toxic Socialization has disconnected and damaged the Bodily Ego to the point where

healing and reconnection is required. From our healing work we **emancipate**, find **passage**, and **reconnect**.

In addition to representing creation, birth, and rebirth, this archetype also represents the safe, healthy, nurturing, abundant, and supportive environments that provide appropriate spaces for health and connection. This archetype reminds us of the significance of Gaia who is here presented as the loving and nurturing platform for our birth and rebirth, an environment within which we can grow to our full potential. The message should be clear, if we want to heal and awaken, if we want to activate and empower, we must create loving and supportive home, work, and social environments where the people can heal, blossom, grow, connect.

At the highest and most aligned levels, this archetype represents physical creation and the ongoing evolution and emanation of **The Body**, your **Physical Unit**, this planet, and all life on it. Note that creation is not a violent war of all-against-all. Creation requires nurturing care and protection.

At mundane levels, this archetype represents birth or rebirth of an idea into reality, or a body, into physical creation. This is the fecund product of the union of **Force** and **Formation** when exercised in a supportive and nurturing environment. This is the generative output and birthright of all living things.

## Cultural References

- [Resilient](#) – Rising Appalachia  
<https://genius.com/Rising-appalachia-resilient-lyrics> –  
[[spotify](#)] “Women at the center...”
- Angelique Kidjo and Davido – Joyful, rebirth, power  
[<https://www.youtube.com/watch?v=anPYTDj0Lrc>]
- Nausicaä of the Valley of the Wind – Studio Ghibli – This cartoon demonstrates respect for the fecundity of nature, as well as the benefits of non-violence and understanding when dealing with conflict.  
[<https://www.imdb.com/title/tt0087544/>]
- "Moana" (2016) – Moana's journey to restore the heart of Te Fiti, a goddess symbolizing creation and nurturing life, highlights themes of healing, restoration, and rebirth of the land and its people.  
[<https://www.imdb.com/title/tt3521164/>]
- The Secret Garden by Frances Hodgson Burnett – This classic children's novel embodies the Rebirth archetype through multiple characters. Mary Lennox, Colin Craven, and the garden itself all undergo transformations,

representing spiritual and emotional rebirth within a  
nurturing environment

- A Christmas Carol by Charles Dickens – Ebenezer Scrooge's transformation from a miserly, cold-hearted man to a generous, compassionate individual exemplifies the Rebirth archetype. His journey of self-discovery and redemption occurs within a single night, symbolizing a rapid spiritual rebirth.
- The Phoenix – In visual art, the phoenix is a powerful symbol of rebirth, often depicted rising from its own ashes. This mythical bird represents the cycle of death and renewal, embodying the resilience to overcome adversity and start anew
- The Lotus Flower – Particularly in Eastern art, the lotus flower symbolizes spiritual rebirth and enlightenment. Its ability to emerge from muddy waters and blossom into a beautiful flower represents the triumph of the human spirit over adversity

•



FORCE

# Force

**Key Phrase:** Consciousness generates.

**Symbolism:** An androgynous face sits amidst powerful and expansive red energies, symbolizing force *improperly* balanced. This is force associated exclusively with the male form, and then unfettered by the suppression of **formation**. Unbalanced force is the current dominant energy reality of Earth, but it should not be. Force and formation in balance is required for fecund creation. Therefore, in current expression, this archetype issues a warning. The powerful energies of **force** drive creation, but without sufficient **formation**, creation careens out of control and ends total and arid ruin. A touch of green in the card hints at **initiation**, transformation, and the **promise** and potential of a new energy with force and formation in balance, but only if you take action in your own life.

## TOSAS Narrative

### Creation's Equation

$$\text{Force} + \text{Formation} = \text{Creation}$$

This archetype teaches a fundamental truth of creation's magic, which is that nothing happens, nothing is created, nothing is **formed**, without the driving **force** of energy and the will that directs

it. Passive attraction and sheep-like “acceptance of what is” accomplishes nothing, or serves another’s agenda. In order to be a fully **empowered lightworker**, in order to be the **star** that you are, you must take wilful action in the world.

At the highest and most aligned levels, this archetype represents the mission-drive that comes with full **realization** and acceptance of your purpose here on Earth. Having responded to **the call**, you have **emancipated** and reformed your mind. Leaving behind your past and moving forward, you have healed and reconnected. Now, you are a confident and **joyful master** here to uplift the **world** and all life on it. Free of self-doubt, you no longer accept limitation. Aligned with your highest Self, you draw **strength** and remove archetypal shackles. **Emancipated** and **activated**, you are reborn in full **power**. Finally, you embrace your full will

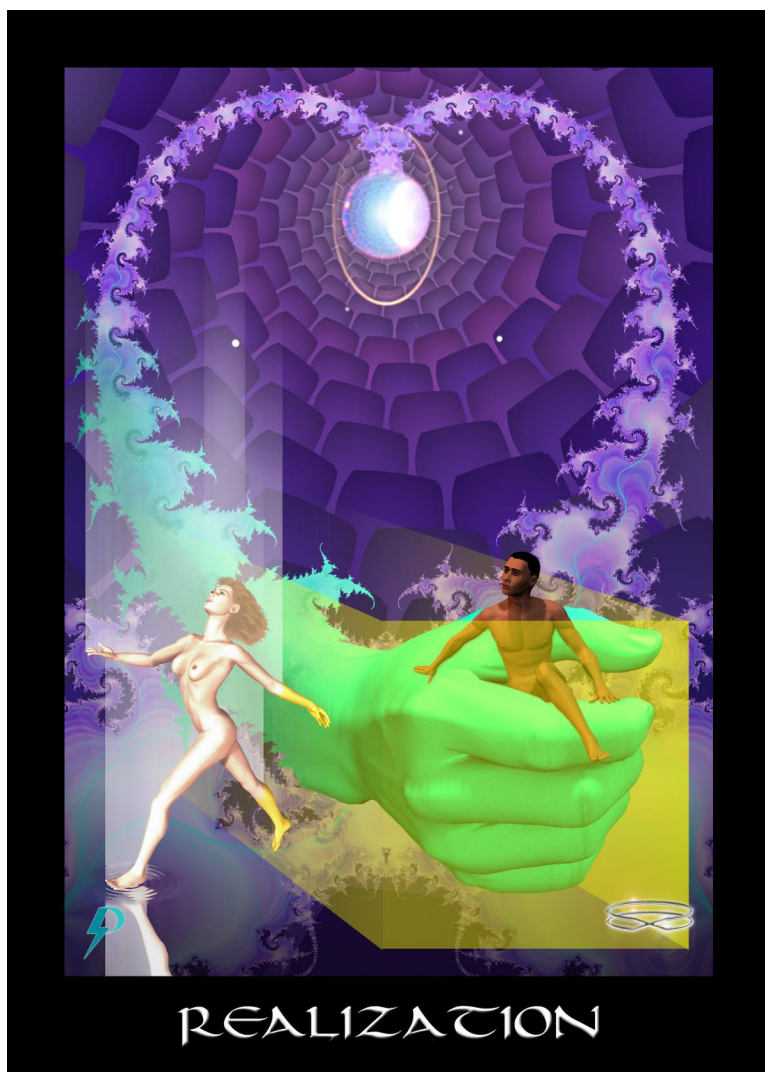
At mundane levels, this archetype represents the purpose-driven action that comes with confidence, **strength**, and **power**. You should not be afraid of personal power and control. You should not be afraid of your own will or fearful of imposing creative direction on your life. Remember, you are a **joyful master** of creation and you are here on a mission. Use force + formation in balance to finish the work and **graduate** the planet.

## Cultural References

- Toxic use of force is a common theme in the pop cultural output of this planet. Just think the Rocky Movies, Star Wars, and anything with an aggressive male lead.
- Appropriate Force. In the children's cartoon [Stephen Universe](#), Stephen Universe uses his will and creativity to nurture, heal, and bring warring opposites together.
- **Shiva and Shakti in Hinduism:** The divine couple represents the union of force (Shiva) and formation (Shakti). Shiva's dynamic energy combined with Shakti's creative power symbolizes the balanced interaction necessary for creation and transformation.
- **Thor in Norse mythology:** Thor's hammer, Mjolnir, represents the raw force of creation and destruction, embodying the power of will and action central to the Force archetype.
- **Michelangelo's "The Creation of Adam"** While not a direct representation, this iconic painting symbolizes the transfer of divine energy and will, resonating with the Force archetype's concept of generative power.

- **The Taoist Yin–Yang Philosophy:** The interplay of yin (formation) and yang (force) illustrates the necessity of balance for harmonious creation.





# Realization

**Key Phrase:** The mind's true liberation

**Symbolism:** The pearl-like globe embedded in purple energies indicates the involvement of the crown chakra, your brain. The yellow box is a box of constriction, limitation, and toxicity, created by the elite creation template. The hand represents authority, power, and control implemented through ideology and archetype. The message is clear. The archetypes in our mind bind and enslave us, but it is possible to break free. The hand of authority clutches as individuals *realize* the truth, but the hand is weak, and the figures are breaking free. Striving for connection (looking up), one figure dips her foot in the new reality (the water) below. Moving forward, she rejoins all who are free.

**TOSAS Narrative:** This archetype represents the mind's true liberation. This is the lightning flash of creative/intuitive/intellectual realization. This is powerful, electrical, inspiration. This is enlightenment, big and small, as it electrifies your body, heals and reprograms your mind, and reverberates throughout your creation. Breaking free from the limitations of mental slavery, you realize the truth. You accept the **sacrifice** that brought you here. You remember the **promise** of healing and reconnection. You reclaim

your status as a **joyful master** of creation. No longer confined within the delusions and self-delusions of maya, you work on the **world** and help others heal and connect. Together, we **graduate** our creation.

At the highest and most aligned levels, you realize (or begin to realize) the truth of things. You realize you have been lied to. You realize you have been severely limited by elite archetypal deception. You realize you are more than an ejected Adam. You realize you are more than a temptress named Eve. You realize are more than a broken-down soul. You realize you are more than fool in cosmic school.

At mundane levels, this archetype points you towards a breakthrough. You remove a brick in the elite's narrative wall. You break through a psychological or emotional blockage that has prevented you from emancipating and empowering. Breaking free of control, you embrace diversity and pursue alternative and progressive solutions.

Note that this is not a single event. Many realizations occur as we progress towards **emancipation, empowerment and reconnection**. Also note, realization is not a simple thing, at least in the beginning. Elite archetypes and their disinformation activities confuse us and

blind all our eyes. Toxic Socialization<sup>12</sup> damages and disconnects us. However, with persistent and consistent individual and collective effort, the elite's archetypal wall slowly crumbles and humanity is finally freed.

### Cultural References

- **Redemption Song** – Bob Marley – Realization/enlightenment can sometimes be cast as redemption. [<https://www.youtube.com/watch?v=5h7adol1OjY>]
- **Alright** – Kendrick Lamar – Personal realizations and transformation [[https://www.youtube.com/watch?v=Z-48u\\_uWMHY](https://www.youtube.com/watch?v=Z-48u_uWMHY)]
- **Change** – Tracy Chapman – An appeal for realization [<https://www.youtube.com/watch?v=bukXKdzyGEY>]
- **The Truman Show (1998)**: Truman's realization that his life is a constructed illusion, and his decision to break free, reflect the archetype's themes of discovering the truth and stepping into a new reality. [[The Truman Show \(1998\) – IMDb](#) ]

---

<sup>12</sup>[https://spiritwiki.lightningpath.org/index.php/Toxic\\_Socialization](https://spiritwiki.lightningpath.org/index.php/Toxic_Socialization)

- **The Buddha's Enlightenment:** Siddhartha Gautama's realization under the Bodhi tree, where he transcends illusion and attains enlightenment, exemplifies the mind's true liberation.
- **The Allegory of the Cave by Plato:** This allegory symbolizes individuals breaking free from ignorance (the shadows on the cave wall) to see the truth of reality, aligning with the archetype's theme of enlightenment.
- **Allegory of the Room** –Mike Sosteric – An awaking/realization allegory  
[<https://www.academia.edu/100583314>]
- **This Morning** – Mike Sosteric  
[[https://www.academia.edu/25350944/This\\_Morning](https://www.academia.edu/25350944/This_Morning)]
- **Prayer for Healing** – Mike Sosteric – An Awakening Poem  
[[https://www.academia.edu/56038925/A\\_Prayer\\_for\\_Healing\\_poem](https://www.academia.edu/56038925/A_Prayer_for_Healing_poem)]

•



# Victory

**Key Phrase:** This is my Spirit triumphant.

**Symbolism:** The human body evolved, empowered, and connected. Spirit fully **activated** and finally triumphant. Encased in flame, rising like a phoenix, you **joyfully** and **powerfully** rise up and transform your self and this **world**. DNA fully actualized and divinity fully articulated, you welcome **Highest Self**. You rejoice as the body (and Body) connects and transforms. Universal energies provide the necessary force as new archetypes help **form** you into a new creation.

**TOSAS Narrative:** This archetype represents the individual and collective [Triumph of Spirit](https://spiritwiki.lightningpath.org/index.php/Triumph_of_Spirit).<sup>13</sup> This is **emancipation**, **connection**, **empowerment** and, by implication, the personal and global transformation that inevitably follow. This is individual and ultimate victory, which is definitely not the triumph of good over evil, but simply the victory of Spirit over the body, and [The Body](https://spiritwiki.lightningpath.org/index.php/The_Body)<sup>14</sup> (i.e., fine-grain control over physical creation). The day of reckoning has arrived. Resistance dissipates. Ignorance and darkness is eliminated. Light illuminates all the dark corners. Persistence, dedication,

---

<sup>13</sup>[https://spiritwiki.lightningpath.org/index.php/Triumph\\_of\\_Spirit](https://spiritwiki.lightningpath.org/index.php/Triumph_of_Spirit)

<sup>14</sup>[https://spiritwiki.lightningpath.org/index.php/The\\_Body](https://spiritwiki.lightningpath.org/index.php/The_Body)

training, and **sacrifice** have finally paid off. **Empowered** and **strong**, we take the final collective step forward.

At the highest collective level, this archetype represents final triumphant healing and reconnection of the planet and its species (humans included) to the highest levels of Consciousness. This is the [Great Work](#) completed. Vestiges of the old world may remain, people may still be in need of assistance, but rapidly dissolving elite power structures and increasingly sophisticated tools and techniques make it easier to heal, connect, and help those who need assistance. Soon the planet will **graduate**.

At more mundane levels, this is a personal or collective victory. Perhaps you have left a toxic relationship. Perhaps you have found a job more aligned with your true Self. Perhaps you have successfully shifted your life. Whatever it is, something has changed for the better. Joyfully embrace this change and continue on your journey home.

### **Cultural References**

- **Exodus** – Bob Marley– refers to eschatological victory of the oppressed – Bob Marley  
<https://www.youtube.com/watch?v=XDM1bZz3gQk>

- **You fckn did it** – Jason Mraz’s song about full empowerment, victory, and the joy that goes along with that. [https://www.youtube.com/watch?v=0VU5902u\\_o4&list=RD0VU5902u\\_o4](https://www.youtube.com/watch?v=0VU5902u_o4&list=RD0VU5902u_o4)
- **Matisyaho** – One Day – A hopeful anthem about the triumph of unity and peace over conflict and destruction [<https://www.youtube.com/watch?v=WRmBChQjZPs>]
- **Steven Universe** – This series emphasizes healing, reconciliation, and creative power as Steven brings together opposing forces through compassion and understanding. The finale explicitly celebrates peace and joy as ultimate victories.
- **The Chronicles of Narnia: The Lion, the Witch, and the Wardrobe by C.S. Lewis**: The resurrection of Aslan after his self-sacrifice mirrors the Victory archetype, symbolizing renewal and hope in the battle against darkness.
- **Baldr's Resurrection** Baldr, the god of light and purity, is prophesied to return after Ragnarok (the Norse apocalypse), symbolizing renewal and hope for a transformed world. His

narrative reflects collective ascension and triumph over destruction,

- **Shambhala Warriors** – Mike Sosteric – Tibetan Buddhism. The prophecy of Shambhala Warriors speaks to collective spiritual awakening during times of great turmoil. This myth emphasizes empowerment, connection, and planetary ascension—central themes in the Victory archetype.  
[[https://www.academia.edu/45006118/Shambhala\\_Warriors](https://www.academia.edu/45006118/Shambhala_Warriors)]  
]
- **The Ghost Dance Movement (Native American)** – Rooted in visions of renewal, this movement sought liberation from oppression through spiritual practices like dance rituals aimed at bringing back ancestors and restoring harmony to the world
- **Nike, Goddess of Victory** – Nike embodies triumph and achievement. Often depicted with wings and a laurel wreath, she symbolizes personal and collective victory. She was closely associated with Zeus and Athena, representing strategic success and divine empowerment. Her presencereflects the archetype’s emphasis on rising above challenges through inner strength and universal alignment.





STRENGTH

# Strength

**Key Phrase:** I serve the Divine Plan.

**Symbolism:** Here we see Gaia embodied as the tree of all life. A kneeling figure, an empowered, but humble servant of Spirit, honouring Gaia and willing to complete the [Great Work](#). Gaia, charging and changing for the task at hand, which is the evolution and healing of [The Body](#) in order to enable its full **connection** to Consciousness. The land is barren, but the grass is beginning to grow as **Consciousness** begins to flow. When the figure stands, life and **power** burst forth. Waters of manifestation, Waters of Consciousness, Waters of Creation. From the Water above (Consciousness) emerges the water below (physical creation). The Water feeds physical manifestation and nurtures the new Garden (of high Consciousness) emerging.

**TOSAS Narrative:** This archetype represents true strength, which is not psychopathic domination and control of others for the purpose of exploitation, but the strength that comes from comprehension, awareness, service, compassion, **connection**, and **power** used in service to support the growth and development of individuals, society, the planet, and all of creation. The model of this true strength is Gaia who through her commitment provides the ground

and support for all life. Recognizing that Gaia is the ground upon which we thrive and through which we connect we kneel, not in obeisance but with respect and gratitude for the environment she provides. Drawing strength and energy from Gaia, we complete our evolutionary task.

At the highest and most aligned levels, this archetype represents the strength that comes when you serve the Great Work, which is the divine evolutionary plan to connect the Body (and the body) with higher Consciousness. On this Earth, you do not incarnate primarily for business or pleasure. You incarnate to uplift creation.

At the deepest level, this card represents a key to successful kundalini activation. Kundalini is a subtle energy flow (like electricity) through the body. Just like with electricity, kundalini energies require a ground through which to flow. When we realize this, we realize the full significance of Earth: Gaia provides the ground for full activation and connection. Without a proper ground, we cannot fully connect and we cannot resume our full **power**.

At mundane levels, this is the strength that you need to get through life, which comes sometimes via inner resources, but more often via the nurturing support of others.

The message of this archetype should be clear. We are not on this planet to rape and exploit. We are not on this planet to dominate and abuse. We are not on this planet to justify and excuse. We gather strength, connection, and grounding from Gaia in order that we might humbly and respectfully nurture and serve. It is useful to look to Indigenous populations for the proper attitude and orientation.

### **Cultural References**

- **Born to Fight** – Tracy Chapman – A beautiful expression of internal strength and resistance, references to the old energy strength card and the amputation of soul (turn me into a white man’s drone)  
[<https://www.youtube.com/watch?v=epL1uFpGcFo>]
- **Harmonize** – Rising Appalachia –  
<https://www.youtube.com/watch?v=hQeg3dd-XM0> –  
Alignment, harmony with the planet and those around you.
- Various indigenous and pagan tree of life symbols represent the nurturing and supportive aspects of Gaia.
- **Yggdrasil (Norse Mythology)** – The World Tree, Yggdrasil, connects all realms of existence in Norse cosmology. It symbolizes the interconnectedness of life and

serves as a cosmic axis through which divine energies flow. This reflects the archetype's theme of grounding higher consciousness into physical creation while nurturing all life

- Michael Jackson's [Earth Song on YouTube](#) speaks to the old energy rape of Gaia, the erasure of Indigenous perspectives, and the extent of the crimes against nature that are involved.
- **Pachamama (Inca Mythology)** – Pachamama, or Mother Earth in Andean cosmology, is revered as a goddess who sustains life and requires respect and reciprocity from humans. She embodies balance between giving and receiving—a core aspect of serving the Divine Plan.
- **Axis Mundi (Shamanic Traditions)** – In many shamanic traditions across Central Asia and Indigenous cultures worldwide, sacred trees or poles represent the Axis Mundi—a connection between physical creation and divine realms. These symbols emphasize service to both earthly life and cosmic order.
- **Kundalini in Hindu Philosophy** – The archetype's reference to kundalini energy aligns with Hindu philosophy, where kundalini is seen as a spiritual force that rises through

the body when properly grounded. This mirrors Gaia's role as the "ground" for spiritual activation and transformation.



# The Promise

**Key Phrase:** The Garden of Full Connection.

**Symbolism:** Two figures rejoice in paradise. Bathed in the highest light of Consciousness/Christ/God (the Sun), they stand firmly in the waters of manifestation. Having, through **sacrifice** and **masterful** effort, uplifted the dense and inanimate disk of physical creation (this Earth) to full and connected life, having completed the **Great Work** and achieved **graduation**, they now bask in the glory of an ascended planet. This planet, once inanimate, then cold and submerged, is now elevated and filled with the Light. Consciousness floods the land. This is the promise of the **power** and the glory of Consciousness, descended and fully expressed in the body and **The Body**. This is the **Crowning of Malkuth**. This is the purpose achieved.

**TOSAS Narrative:** This archetype teaches you the point and the purpose of your **joyful** incarnation. You are not here to learn lessons or pay off karma. You are here to build a **Garden** so that we might, at the end of the sixth day, graduate, celebrate, and joyfully play in our new creation. To be perfectly clear, you are here to evolve the planet's social, technological, economic, and political systems to the

point where integration of the planet and all its people into interplanetary civilization becomes possible.

In addition to representing the crowning of physical creation with Consciousness, this archetype also represents a promise of forgiveness, healing, and return. Let us be clear. While **sacrificing** in the darkness, while stumbling beneath [The Blindfold](#),<sup>15</sup> we all do bad things. This archetype represents the promise that if you undertake the **sacrifice** of disconnection in order to uplift and **graduate** a planet, then no matter how damaged and twisted you may be, no matter how far you have fallen, a way home will always be provided for you. Despite all propaganda to the contrary (i.e. notions that you will be judged and discarded into hellfire, that you are not worthy, that you require tutelage and redemption), this is the unbreakable **Covenant**. This is the promise that no matter where you stand, no matter what you have done, no matter how far you have fallen from **connection**, no matter how many “evil” and selfish acts you have engaged, a path home to healing and reconnection will be provided. This is the promise made to you before incarnation. There is no “karmic cleansing.” There is no foolish tutelage. At the end of the day, there is no judgment and no damnation. No matter what you may have done, you are forgiven for your sins. However note, fulfillment of the promise requires and

---

<sup>15</sup><https://www.lightningpath.org/allegories/allegory-of-the-blindfold/>

end to malfeasance and a sincere effort to atone. It is definitely *not* business as usual. You cannot continue harming and exploiting others and still expect a warm welcome home.

At the highest and most aligned levels, this archetype represents the exaltation of **Consciousness** in matter, the end-point of planetary gestation, the glorious end-times summation. This is the collective recognition of divinity, mass reconnection, and the glorious culmination of the **Divine Plan**. This is not **graduation** *per se.*, for that is a celebratory and interplanetary event. However, this is successful manifestation of the **Garden of Full Connection** (a.k.a. Eden, Heaven, or Shambhala). From collective realization of divinity and the final ascent of Consciousness, it is only a short step up the podium for **graduation**.

### Cultural References

- **Reap that Joy** – Redn Collective – Joyful expression of the Promise [https://www.youtube.com/watch?v=o5VhsF3FGq8]
- **The Garden of Eden (Abrahamic Traditions)** – The Garden of Eden represents humanity's original state of harmony with God, creation, and each other. While the fall symbolizes disconnection, eschatological traditions in

Christianity, Judaism, and Islam promise a return to this state of perfection at the end of time. This mirrors the archetype's vision of a "Garden of Full Connection," where divine consciousness is fully integrated into creation.

- **Shambhala (Tibetan Buddhism)** – Shambhala is a mythical kingdom said to emerge during times of great crisis. It represents a utopian state where wisdom, compassion, and harmony reign supreme. The prophecy of Shambhala warriors emphasizes collective awakening and planetary healing through courage, insight, and compassion—key themes in this archetype.
- **Zoroastrian Eschatology** – Zoroastrianism envisions a final restoration (*Frashokereti*), where all creation is purified and reunited with Ahura Mazda (the supreme god). This process culminates in a perfected world free from evil—a vision closely aligned with the archetype's promise of planetary ascension and divine connection.
- **The Kalachakra Tantra (Vajrayana Buddhism)** – The Kalachakra teachings describe an inner battle against ignorance and samsara, leading to enlightenment and the realization of Shambhala within oneself. The ultimate goal is the manifestation of a harmonious world through

collective spiritual awakening.

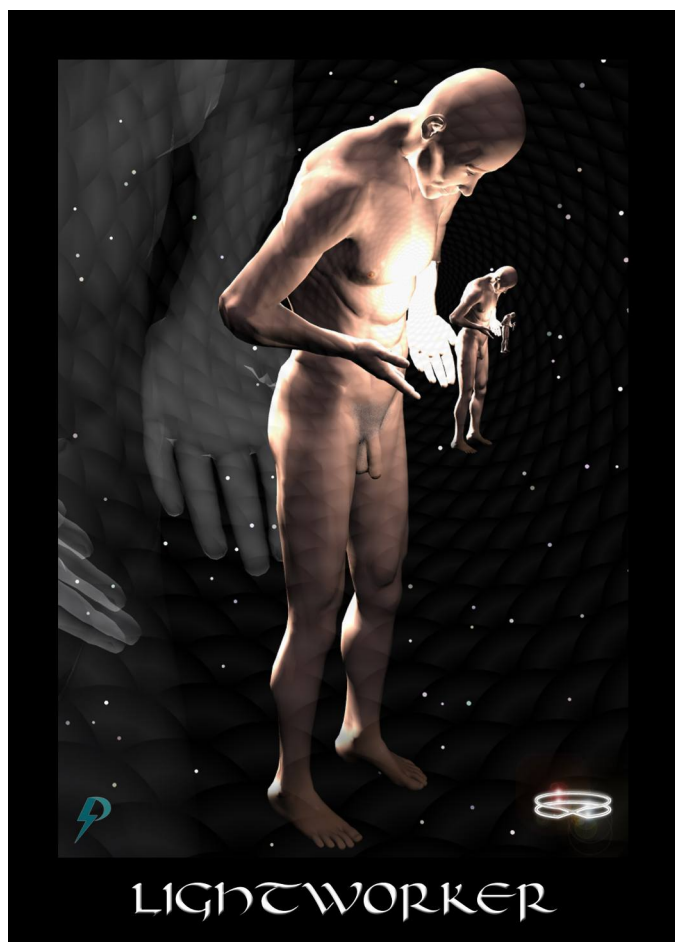
- **The Golden Age (Greek Mythology)**

In Hesiod's *Works and Days*, the Golden Age is described as an era of peace, abundance, and harmony between humans and nature. This myth reflects humanity's yearning for a return to a state of divine connection and unity with creation.

- **Dante's *Paradiso*** = The final part of Dante Alighieri's *Divine Comedy* describes his journey through paradise to behold divine unity. It captures themes of ascension, forgiveness, and ultimate connection with God—core elements of this archetype.

- **The Chronicles of Narnia: *The Last Battle*** by C.S. Lewis = The conclusion to Lewis's series depicts Aslan leading his followers into a new creation—a perfected version of Narnia that reflects divine harmony and fulfillment.

- The Poem [Shambhala Warriors](#) by Mike Sosteric points to the fulfillment of the promise and the graduation of the planet.



# Lightworker

**Key Phrase:** A new light is born in the **world**.

**Symbolism:** A multidimensional figure representing your **Highest Self/Spiritual Ego/Soul/Atman** as it emanates and “descends” into physical creation. The figure holds the light of **Consciousness** in its hands, presenting itself to itself, and working with itself at each new level of **The Unfolding**. The nude figure indicates that despite the **sacrifice**, your highest Light is unencumbered by the dirt and detritus of disconnected physical existence. The diminishing figure indicates your **connection** and **power** dim and diminish as you descend into the cold, opaque, and disconnected physical universe. However, remember the **promise**. Full **power** will be restored at the point of **graduation**.

**TOSAS Narrative:** This archetype represents a sacred truth, which is that we are all sparks of eternal Consciousness, that we all “descend” into physical manifestation, and that we all hold the Light of Consciousness so we can evolve and ascend physical creation. This archetype represents you as a pure and perfect reflection of Highest Self, diminished as you descend into physicality, but powerful and mighty all the same. To be clear, you are a **masterful** manifestation of the word and the will of Spirit. You are a perfect

expression of the love and power of God. You are a lightworker here to uplift and graduate the planet. To **realize** this, respond to the **calling**, **initiate** re-awakening, **emancipate** your bodily ego, **connect** your mind to your Highest Self, and reclaim full **power**. Remember, the Word, the Will, the Power, and the Love of God are in your hands even now.

At the highest and most aligned levels, this is the Light of your Highest Self, the Avatar within you, as it, as You, pass into physical existence in order to incarnate and complete the [Great Work](#).<sup>16</sup> Remember, this is not the work of soul evolution or karmic cleansing. This is the work of planetary evolution.

At mundane levels, this is positive recognition and affirmation of Self, and positive and life-affirming work. Artist, scientist, builder, farmer, administrator, educator, or creator, this is what you came to do.

### Cultural References

- **Holy Diver** – Dio – This song tells the story of a savior figure (lightworker/bodhisattvas) who descends into darkness to redeem others. The protagonist's journey reflects the Initiation Archetype's struggle to rise out of

---

<sup>16</sup>[https://spiritwiki.lightningpath.org/index.php/The\\_Great\\_Work](https://spiritwiki.lightningpath.org/index.php/The_Great_Work)

chaos and disconnection while bringing light to others. The song mirrors the archetype's emphasis on courage and perseverance in the face of challenges. The "tiger" symbolizes primal energy that must be harnessed during the climb toward enlightenment. [<https://www.youtube.com/watch?v=2lvs2FzF64o>] – The video is super cheesy, I'm sorry.

- **Avatar: The Last Airbender<sup>17</sup>** – Aang is a Lightworker, not here to fight evil but to bring people together.
- **Stephen Universe<sup>18</sup>** The titular character is a lightworker on Earth, not here to fight evil but to help heal and reconnect the planet.
- **Warrior** – Xavier Rudd – Lightworkers often present as warriors with a message of protection. [<https://www.youtube.com/watch?v=VXUbYsonXQ>]
- **Quetzalcoatl (Mesoamerican Mythology)** – The feathered serpent deity is associated with enlightenment, knowledge, and creation. Quetzalcoatl's role as a bringer of wisdom reflects the archetype's focus on uplifting humanity.

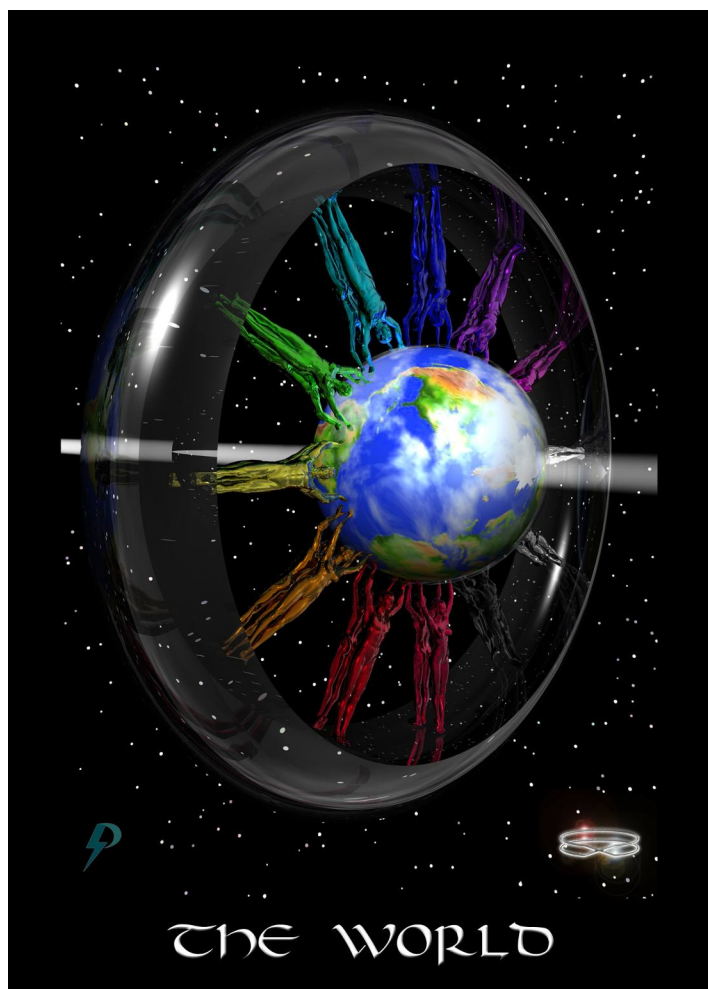
---

<sup>17</sup><https://www.imdb.com/title/tt0417299/>

<sup>18</sup><https://www.imdb.com/find?q=Stephen+Universe>

- **Bodhisattvas (Buddhist Tradition)** – Bodhisattvas delay their own enlightenment to assist others on their spiritual paths. This act of selfless service mirrors the lightworker's dedication to raising collective consciousness.





# World

**Key Phrase:** We transform the world and complete the [Great Work](#).<sup>19</sup>

**Symbolism:** Twenty-four multi-coloured figures, symbolic of the twelve signs of the Zodiac, the Twelve Tribes or Twelve clans, and the entire gender spectrum (the **Rainbow Spectrum**) work together and with Gaia to complete the Great Work. The meniscus represents this planet's creation template which informs and guides our view of self, our view of the world, and our actions in the world.

**TOSAS Narrative:** This archetype answers the big question, “Why am I here.” The answer it conveys is simple. You are here not for individual attainment, not to overcome some in-born imperfection, and not to make karmic reparation. You are here to help evolve the planet. To be sure you may be, as yet, unaware; but have no doubt; you are here as a **joyful** and **powerful master** to complete the **Great Work**.

At the highest and most aligned levels, this is the Great work of evolving and ascending a planet, a new pearl in the vast cosmic ocean of time-space. You should know, this is a big job and it takes a long time. Furthermore, this is not an individual process; it is a

<sup>19</sup>[https://spiritwiki.lightningpath.org/index.php/The\\_Great\\_Work](https://spiritwiki.lightningpath.org/index.php/The_Great_Work)

collective action. All life forms, not only humans, are implicated. To **graduate** a planet, all life is required.

At a mundane level, this is your job, a hobby, your home, your family, your life, *and* the people that help you create and maintain it all. Never forget, you are part of a local, national, and global community. Despite the lies you have been told, there is no such thing as individual attainment or heroic independence. Take a look behind you at those that have nurtured and guided you, like parents and teachers. Take a look at all those farm workers, trades people, services people, and factory workers who provide for the life that we live. The message of this archetype should be clear; we are all dependent for the lives that we live on each other; we all work together to evolve our creation. We are all all necessary. We all contribute. We can finally graduate only when every one is on board.

### **Cultural References**

- **"Heal the World"** – by Michael Jackson – This iconic song calls for unity and compassion to heal the planet, reflecting the archetype's focus on global cooperation and collective responsibility. The World Archetype emphasizes that humanity's purpose is not individual attainment but collective action to evolve the planet. Similarly, *"Heal the*

*World*" calls on everyone to take responsibility for creating a better world. The archetype highlights unity across diversity, represented by the Rainbow Spectrum of humanity. Jackson's lyrics emphasize love as the central force that binds us all and motivates positive change: [\[https://www.youtube.com/watch?v=BWf-eARnf6U\]](https://www.youtube.com/watch?v=BWf-eARnf6U)

- **One Love** – Bob Marley – [\[https://www.youtube.com/watch?v=IN0KkGeEURw\]](https://www.youtube.com/watch?v=IN0KkGeEURw) – Bob Marley's *"One Love"* perfectly encapsulates the **World Archetype** by calling for collective unity, forgiveness, and action against injustice. Its vision of harmony—rooted in love, compassion, and shared responsibility—mirrors the archetype's goal of evolving humanity into a cohesive force capable of transforming Earth into a place of peace and joy.
- **The Calling** – Xavier Rudd – Rudd's song beautifully aligns with the **World Archetype**, which represents connection, unity, and the joyful promise of a healed and integrated world. The song's emphasis on standing together amidst challenges and finding freedom through reconnection with nature and each other reflects the archetype's message of planetary harmony and collective transformation. The lyrics speak to the end of "reckless

plunder” and a return to balance, mirroring the World Archetype’s vision of a healed planet where unity and interdependence flourish. [<https://www.youtube.com/watch?v=wo-wMZeL69U>]

- **Imagine** – John Lennon – An appeal for global unity and oneness. No other comment necessary. [[https://www.youtube.com/watch?v=b6rBQ\\_hBpxc](https://www.youtube.com/watch?v=b6rBQ_hBpxc)]

•



# Alignment

**Key Phrase:** To mine own Self be true

**Symbolism:** An abstract representation of alignment. A sword, balanced on either side by force and formation (yang and yin). This is not the sword of judgment, punishment, and reward, as it would be in the elites' creation template. This is the sword of discernment and full **alignment** with [Spiritual Ego](#). This is the key to **passage** through the doorway and into [The Garden](#).

**TOSAS Narrative:** This archetype teaches us the key to healing and reconnection, which is alignment between the spiritual ego and bodily ego. **Activation, connection, joyous rebirth** of the Self, **emancipation, empowerment, and graduation** require alignment with your own [Spiritual Ego](#). Note that alignment is not onerous. Alignment requires no sacrifice. Alignment does not require a Fool's journey home. Alignment requires only that you open and align yourself to be who you truly are deep inside, a being of joy, compassion, love, intelligence, light, and power. Alignment brings **power, peace, contentment, happiness, joy, and the attainment of a stronger connection**. Disjuncture brings pain, suffering, decrepitude, and death. Only a person who does not know better

chooses the Hard Path<sup>20</sup> and the severe consequences of disconnection.

At the highest and most aligned levels, this is perfect **alignment** with Spiritual Ego,<sup>21</sup> perfect alignment with Consciousness, and the active and eyes-wide-open pursuit thereof. Recognizing the importance of your Spiritual Ego, you work to establish Right Thought, Right Action, and Right Environment. The closer are your approximations to the real Self that is your Spiritual Ego, the faster you heal and the stronger your connection will be.

At mundane levels, this is healing and repair of the physical body and mind through the establishment of right action, right thought, and right environment. Putting delusion and self-delusion aside, you align thought and action with your Self. Breathing deeply, you **atone** for the harm you have caused others. Focusing on the manifestation of the **promise**, you fix that which is broken first in your world, and then in the world.

## Cultural References

- **Live High** – Jason Mraz – *Live High* beautifully aligns with the **Alignment Archetype**, celebrating the joy and fulfillment that come from living authentically and in

<sup>20</sup>[https://spiritwiki.lightningpath.org/index.php/The\\_Hard\\_Path](https://spiritwiki.lightningpath.org/index.php/The_Hard_Path)

<sup>21</sup>[https://spiritwiki.lightningpath.org/index.php/Spiritual\\_Ego](https://spiritwiki.lightningpath.org/index.php/Spiritual_Ego)

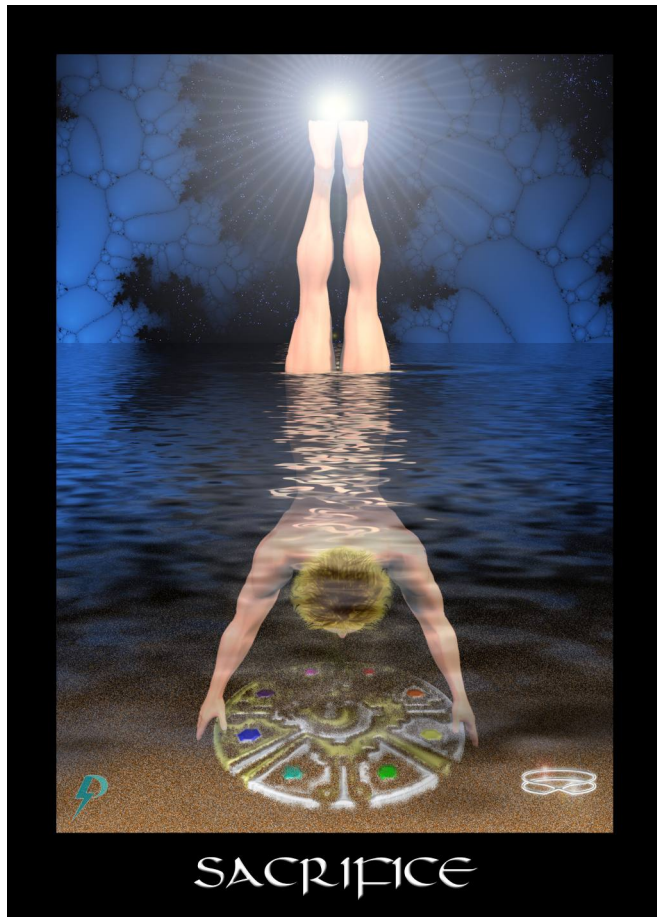
harmony with one's higher self. The song's call to "live righteously" and embrace gratitude reflects the archetype's emphasis on Right Thought, Right Action, and Right Environment as pathways to peace and empowerment. Through its lyrical focus on interconnectedness and seeing beyond superficial realities, the song underscores the transformative power of aligning with one's true essence. <https://www.youtube.com/watch?v=trJeelxl4mo> Divinity, joyful existence, alignment, rejection of duality

- **Material World** – Tracy Chapman – Tracy Chapman's *Material World* resonates with the **Alignment Archetype** by contrasting the pursuit of material wealth with the deeper fulfillment found in authenticity and spiritual alignment. The song critiques disconnection from true Self in favor of external gains, highlighting that genuine joy and power arise not from possessions but from aligning thought and action with one's higher, spiritual nature. [\[https://www.youtube.com/watch?v=qXi\\_b\\_oGi0I\]](https://www.youtube.com/watch?v=qXi_b_oGi0I)
- **Man in the Mirror** – Michael Jackson
- **The Tao (Taoism)** – In Taoism, alignment is at the core of the philosophy. The Tao represents the natural order of the universe, and living in alignment with it brings harmony

and flow. The balance of yin and yang mirrors the sword symbolism in the Alignment Archetype, where force (yang) and formation (yin) coexist in perfect equilibrium.

- **The Chakras (Hinduism)** – The concept of Kundalini energy rising through aligned chakras reflects the archetype's focus on healing and connection. When chakras are balanced, an individual experiences spiritual clarity and empowerment.
- **The Ten Commandments** – The Ten Commandments, rooted in Judaism and Christianity, provide moral and ethical guidelines for aligning one's actions with divine will and fostering harmony in relationships with God and others. They emphasize principles like reverence, respect, honesty, and justice, which are essential for living a balanced life
- **The Buddhist Eight Fold Path** – The Eightfold Path is a central teaching in Buddhism that outlines practices for achieving liberation from suffering (dukkha) through ethical conduct, mental discipline, and wisdom. It provides a step-by-step guide to aligning one's mind, speech, actions, and livelihood with the Dharma (universal truth).

•



# Sacrifice

**Key Phrase:** My sacrifice is disconnection from Self.

**Symbolism:** Here we see a **joyful master** sacrificing full connection to Consciousness in order to descend into **The Waters** (of Manifestation) and uplift physical creation (the Earthen disk). Anchored by the light of **Consciousness**, but submerged, inverted, and with no light at the [Crown Chakra](#), this figure is disconnected. Embracing physical creation, this sacrificing **lightworker** strains and struggles to uplift this planet now, and others before it. Through sacrifice and hard work, we lift physical creation, this **world**, up through the darkness of in-animation towards animate life capable of containing the highest levels of Consciousness. It is through our collective work and sacrifice that we transform and **graduate** the **world**.

**TOSAS Narrative:** This archetype teaches you of your sacrifice, which is to descend, disconnected, into incarnation to complete the **Great Work**. You cannot deny, the Great Work is challenging and difficult. Many have suffered and **sacrificed** as we struggle to uplift the planet. Generations have come and gone. Individually we might fail. Along the way, many battles are lost; however, in the end, the

outcome was never in doubt. Graduation marks the end of this show.

At the highest and most aligned levels, this is the sacrifice required to undertake the Great Work, which is the work of evolution and **ascension**. Disconnected and [blindfolded](#),<sup>22</sup> you descend into darkness in order that you might ascend physical creation. It is hard work, the conditions are not ideal, and so you struggle and suffer. You accept and endure because the reward for your effort is a pearl of inestimable value—an ascended and **graduated world**.

At mundane levels, this is the physical work and sacrifice we endure so that we can create the world that we want. In the physical world, a house does not appear out of thin air. In the physical world, a garden does not appear without effort. In the physical world, nothing good comes without effort and sacrifice.

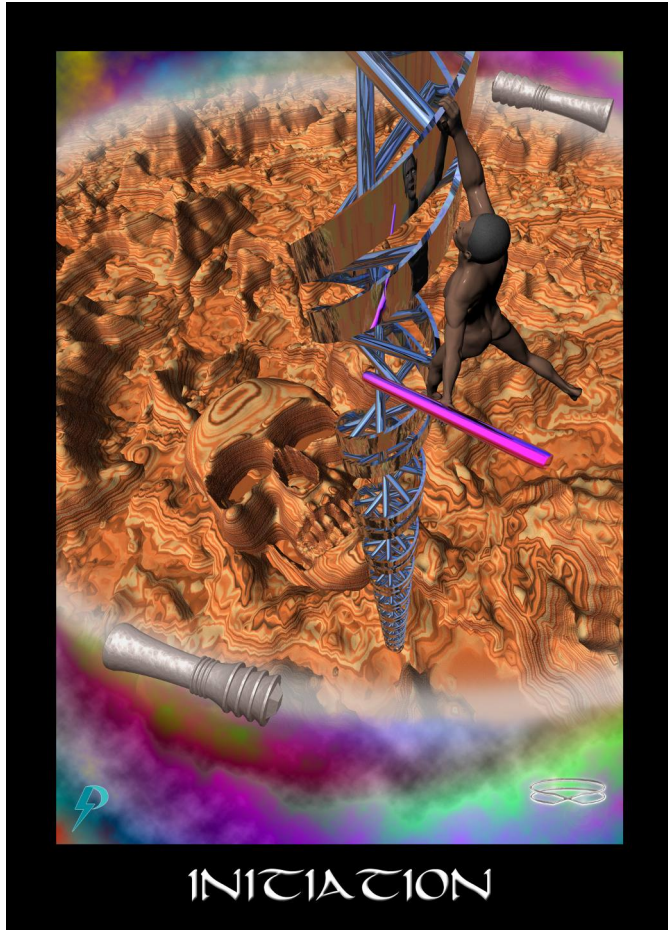
## Cultural References

- **"Hallelujah" – Leonard Cohen** – While layered with spiritual and romantic themes, the song's references to King David and sacrifice reflect the archetype's tension between suffering and divine purpose: *"Love is not a victory march; it's a cold and it's a broken hallelujah."*

---

<sup>22</sup><https://medium.com/literally-literary/allegory-of-the-blindfold-3486fef2161a>

- **Frida Kahlo's *The Broken Column*** – This painting symbolizes physical and emotional suffering endured for creativity and expression. Kahlo's own life was marked by immense pain, yet she transformed it into art that uplifts others.
- **The Self-Sacrificing Tree (Various Artists)** – Inspired by Shel Silverstein's *The Giving Tree*, many artworks depict trees as symbols of selfless giving—offering their fruit, shade, or wood for others' benefit.
- **Bodhisattvas (Buddhism)** = Bodhisattvas delay their own enlightenment to help others achieve liberation from suffering, embodying self-sacrifice for collective spiritual evolution.
- In the children's cartoon [Stephen Universe](#), Stephen's Mother sacrifices herself, a high level Light worker, in order to create a son who can help heal the world.
- **The Chronicles of Narnia: The Lion, the Witch, and the Wardrobe by C.S. Lewis**: The resurrection of Aslan after his self-sacrifice mirrors the Victory archetype, symbolizing renewal and hope in the battle against darkness.



# Initiation

**Key Phrase:** I am no longer weak and afraid.

**Symbolism:** As we respond to the **calling**, we begin our ascent. The chaos, darkness, disease, and disconnection of the elite's creation template lies below us as we struggle to lift ourselves out. The ladder is vertical; the climb is difficult; the pitfalls numerous. However, there is hope. Remembering **the promise**, we release fear. **Realizing** the truth, understanding and clarity emerge. New ideas and new ways of looking at things bring renewed purpose. **Strength** slowly returns. The pace accelerates. New energies begin to flow. A circle/energy sphere provided by our guides provides a protective boundary to help keep the climber on track.

**TOSAS Narrative:** This archetype represents individual *and* collective initiation, and the process of awakening, healing, and **reconnection** that occurs as we will ourselves forward. This process initiates and accelerates as we shrug off elite archetypes and gradually reform our thought. As we lift ourselves out of the muck, we gradually heal and reconnect. Note, this archetype represents the actual process itself, but also a point of emotional, psychological, spiritual, and/or political maturation along the way.

At the highest and most aligned levels, this archetype represents the individual and collective realization that there is more to life than meets the proverbial eye. As understanding dawns, we initiate the process of healing and reconnection. Gradually, we lift ourselves out of the archetypal muck of the elite creation template. This is a struggle and it does take work, but it gets easier as we go along.

At mundane levels, this is the realization that your life isn't working, and something needs to change. Now, you have a choice. Either continue on "business as usual" or, heal and **reconnect**.

### **Cultural References**

- **Vision Quests (Indigenous Cultures)** – Individuals undergo solitude and fasting in nature to gain spiritual insight and reconnect with their purpose.
- **Buddha's Enlightenment (Buddhism)** – Siddhartha Gautama's journey toward enlightenment reflects the Initiation Archetype. He leaves behind a life of luxury, confronts suffering, and ultimately awakens to profound truths under the Bodhi tree. This mirrors the climb out of darkness toward understanding.
- **Shamanic Initiation** – In many shamanic traditions, initiates undergo a symbolic death-and-rebirth experience

through visions or physical trials. This process connects them with spiritual realms and prepares them for their role as healers or guides.

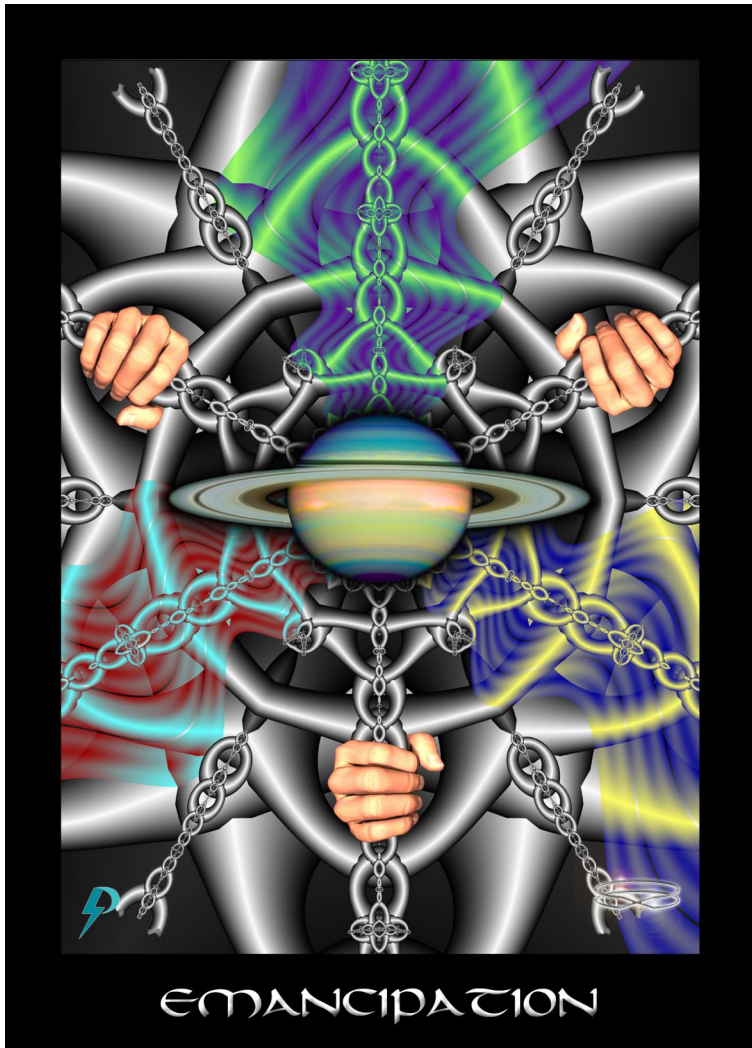
- **Over the Mountain** – Ozzy Osborne – Ozzy's song reflects the archetype of **Initiation** through its vivid imagery of transcendence, self-discovery, and spiritual awakening. The lyrics describe a journey across mystical realms, such as the "astral plane," symbolizing the initiate's passage from ordinary existence to higher consciousness. Themes of inner power and liberation emerge in lines like "Don't need no astrology, it's inside of you and me," emphasizing self-reliance and the awakening of innate wisdom. The longing for transformation, captured in the "fever of a breakout," and the desire to guide others by "showing them how" align with the archetype's culmination: achieving enlightenment and sharing it with others. Ultimately, the song encapsulates initiation as a process of breaking free from limitations, embracing inner light, and transcending into a state of spiritual freedom [https://www.youtube.com/watch?v=RrECR8daZPg]
- [Solsbury Hill](#) – Peter Gabriel – *Solsbury Hill* aligns powerfully with the **Initiation Archetype**, as it tells the story of an awakening and the transformative decision to

follow one's true path. The song's narrative of a mystical experience on Solsbury Hill represents the moment of realization and the internal call to embrace change, truth, and authenticity. Gabriel's lyrics, such as "I was feeling part of the scenery, I walked right out of the machinery," reflect the act of breaking free from societal constraints and stepping into alignment with one's deeper purpose. The song's uplifting tone and reflective lyrics echo the Calling Archetype's themes of awakening, empowerment, and taking a bold step forward despite uncertainty. It captures the essence of listening to the inner voice, trusting the journey, and embracing the unknown as part of a greater, more meaningful evolution. Through its timeless message, *Solsbury Hill* inspires listeners to honor their own calls to transformation and connection.

[\[https://www.youtube.com/watch?v=WeYqJxlSv-Y&ab\\_channel=PeterGabriel\]](https://www.youtube.com/watch?v=WeYqJxlSv-Y&ab_channel=PeterGabriel)

- **Tool** – Much of the music of Tool is a reflection of new energy archetypes like initiation, awakening, connection, graduation.





# Emancipation

**Key Phrase:** Free at last.

**Symbolism:** The planet Saturn with its ridged outer rings represents the boundaries and limitations imposed by the elite creation template. Archetypal chains bind the mind and the body. Our energies and actions, or mind and emotions, have been restricted and controlled, but our bondage is coming to end. Individuals grasp the archetypal chains that bind and pull, thus breaking the chains. By our own effort, and with the assistance of others, we emancipate from mental slavery.

**TOSAS Narrative:** This archetype represents emancipation from [The System](http://spiritwiki.lightningpath.org/index.php/The_System).<sup>23</sup> This is release from the archetypal chains that bind. This is the emotional, psychological, and physical **empowerment** that results. This is growing freedom to act in the world in the best interests of yourself, your family, and the planet.

At the highest and most aligned levels, this is individual and collective emancipation of the physical unit (the body *and* the mind) from the fear, uncertainty, and creative impotence imposed by the elite creation template. You answer the **call** and **initiate**. You

---

<sup>23</sup>[http://spiritwiki.lightningpath.org/index.php/The\\_System](http://spiritwiki.lightningpath.org/index.php/The_System)

overcome fear and self-loathing. You establish right thought<sup>24</sup> and right action.<sup>25</sup> You gather **strength** and **align**. Your confidence grows. With clarity of purpose, you exert your will and break free. Blockages dissolve and you move towards **activation** and full **power**.

At mundane levels, this is freedom to act as you will and desire, in alignment with your Spiritual Ego,<sup>26</sup> but without confusion and fear. You change your mind. You change your job. You change your body. You change your life. You make an adjustment because you want to, because you can, and because it is right.

### Cultural References

- **Let Me Be** – Xavier Rudd – This song captures the essence of personal emancipation and the yearning for freedom. Its repetitive plea, "Let me be, I want to be free," reflects the archetype's focus on breaking free from imposed limitations, whether societal or personal. The song's connection to nature and simplicity further emphasizes the liberation of the self from external constraints, aligning with the archetype's themes of empowerment and self-

---

<sup>24</sup>[http://spiritwiki.lightningpath.org/index.php/Right\\_Thought](http://spiritwiki.lightningpath.org/index.php/Right_Thought)

<sup>25</sup>[http://spiritwiki.lightningpath.org/index.php/Right\\_Action](http://spiritwiki.lightningpath.org/index.php/Right_Action)

<sup>26</sup>[http://spiritwiki.lightningpath.org/index.php/Mind\\_of\\_God](http://spiritwiki.lightningpath.org/index.php/Mind_of_God)

determination. [<https://www.youtube.com/watch?v=OdJImQ5mRU>]

- **Redemption Song** – Bob Marley – Marley's iconic line, "Emancipate yourselves from mental slavery, none but ourselves can free our mind," directly embodies the archetype's message of liberation from oppressive systems and mental chains. The song is both a personal and collective call to action, urging listeners to overcome fear and reclaim their power. Its spiritual undertones and timeless appeal make it a perfect representation of the emancipation archetype. <https://www.youtube.com/watch?v=5h7adol1OjY>
- **Exodus** – Bob Marley – This song serves as a rallying cry for collective movement and transformation, with its refrain, "Exodus: movement of Jah people." It aligns with the archetype's narrative of breaking free from systemic oppression and moving toward a higher purpose. The song's emphasis on unity and action underscores the collective aspect of emancipation. [https://www.youtube.com/watch?v=cZqSN\\_RtgwI](https://www.youtube.com/watch?v=cZqSN_RtgwI).
- **Fire of Freedom** – Matisyahu – Matisyahu's lyrics about "the flame from the fire of freedom" evoke imagery of inner

strength and resilience. The song speaks to overcoming adversity and finding liberation through spiritual awakening and perseverance. Its energetic tone and references to rising above challenges reflect the archetype's themes of empowerment and breaking through barriers.

[<https://www.youtube.com/watch?v=5AasMl1fIQs>]

- **The Times They Are A-Changin' – Bob Dylan** – Dylan's classic folk anthem captures a broader sense of societal emancipation, calling for change and progress in the face of outdated systems—a direct reflection of collective liberation. [[https://www.youtube.com/watch?v=90WD\\_ats6eE](https://www.youtube.com/watch?v=90WD_ats6eE)]

•



# THE CALLING

# The Calling

**Key Phrase:** This is your time to wake up.

**Symbolism:** Consciousness/Spirit/Spiritual Ego/God is calling. The nurturing energies of life surround and support. Three figures hear The Call and look up. Lifting hands to the sky, the body/mind opens and begins to awaken. Love, power, compassion, and understanding begin to flow. A powerful pull that you cannot not ignore.

**TOSAS Narrative:** This archetype represents the individual and collective call to awaken. As you respond to the Call and begin to awaken, the search for greater meaning, purpose, and understanding begins. The powerful urge to embrace truth and truly see reality grows. You begin to realize there is more to life than what you can see, and what you've been told. You begin to wonder, "What is this more?" You take a healing and connection step forward on **The Path** of **empowerment** and **activation**. As you progress you remember, life isn't about judgment and punishment or trials and tribulations. Life isn't about karmic debt and foolish tutelage in an oppressive cosmic school. It is a joyful, divine, evolutionary dance.

At the highest and most aligned levels, this is the individual and collective call to **awaken**, to **activate**, to heal, and to **ascend** to

stronger **connection** so that we can finally complete the **Great Work**. The time for pretending and pretension is over. The time to move forward is now. There is nothing to fear. Make the decision to rejoin. To **initiate**, recite an awakening affirmation. “I wish to move forward. I wish to awaken. I wish to activate. I wish to connect.” There is much for you to remember, but it is easier than you think. Heal and reconnect so you can awaken, activate, and ascend to glorious union. Renew and reveal your true glorious Self. Remember and rejoice in the **power** and glory of your true divinity.

Expansion, (spiritual, emotional, psychological, etc.) growth, evolution, healing, and connection lie ahead, but only if you take the next step. As with all journeys, work is involved. You may refuse if you wish, but the choice to remain in the old elite narrative leads inevitably to diminishment of the soul and death of the body. Avoid that fate.

At mundane levels, this is an external or internal call for your attention. Something is out of place. Someone is out of alignment. Somebody points out a problem. Some thing needs your awareness. Wake up and pay attention to your life and the people within it.

## **Cultural References**

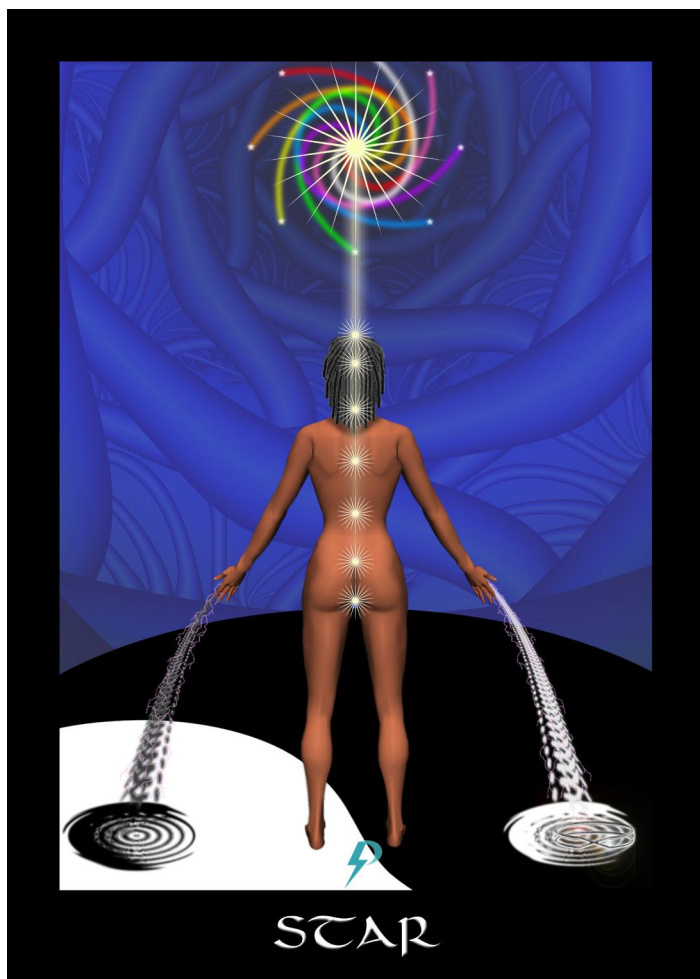
- **Exodus** – Bob Marley – *Exodus* resonates profoundly with the **Calling Archetype**, as it embodies a collective awakening and a call to action. The song speaks to the need for liberation, both physical and spiritual, urging people to rise up, break free from oppression, and move forward toward freedom and unity. Its central message aligns with the archetype's emphasis on answering the call to awaken and embrace a greater purpose.  
[<https://www.youtube.com/watch?v=nv584jRwh0s>]
- **The Calling** – Xavier Rudd – This song directly aligns with the "Calling" archetype by embodying the awakening of consciousness and the recognition of life's deeper purpose. Its lyrics encourage listeners to connect with nature, community, and their inner selves, reflecting the archetype's emphasis on responding to a higher spiritual call. The nurturing energy in Rudd's music resonates with the archetype's symbolism of life-supporting forces surrounding those who awaken. The song serves as an invitation to embrace truth, compassion, and empowerment.  
[<https://www.youtube.com/watch?v=wo-wMZeL69U>]
- **Man in the Mirror** – *Man in the Mirror* aligns closely with the **Calling Archetype**, as it represents a powerful call to

awaken and take responsibility for personal and collective transformation. The song's emphasis on self-reflection and change mirrors the archetype's message to "wake up" and recognize the need for alignment with truth, compassion, and purpose. <https://www.youtube.com/watch?v=PivWY9wn5ps>

- **Earth Song** – Michael Jackson – "Earth Song" is a powerful representation of the collective call to awaken to humanity's impact on the planet. Jackson's lyrics and emotive delivery highlight themes of environmental destruction, war, and apathy, urging listeners to "wake up" and take responsibility for healing the Earth. The song mirrors the archetype's narrative by calling individuals to recognize a greater purpose beyond material concerns and to act in alignment with love, compassion, and understanding. It evokes a sense of urgency that is central to the "Calling" archetype. <https://www.youtube.com/watch?v=XAi3VTSdTxU>
- **An Invitation** – Rising Appalachia – This song embodies the gentle yet compelling pull of awakening described in the "Calling" archetype. Its lyrics invite listeners to step into alignment with nature, community, and their higher selves.

The nurturing tone and emphasis on connection echo the archetype's symbolism of life-supporting energies guiding individuals toward healing and empowerment. The song encourages listeners to embrace their role in a collective journey toward greater awareness and purpose.

<https://www.youtube.com/watch?v=rUau3oykfzc>



# The Star

**Key Phrase:** Aligned, activated, and completely connected.

**Symbolism:** The yin/yang symbol on the floor symbolizes physical creation, not cold, submerged, and disconnected as in **sacrifice**, but created with balance and connection, and reflecting the aligned will of Spirit. The figure is shown **connected** to [Source Consciousness](#) (e.g., Spiritual Ego) and fully **activated**. The figure pours balanced energy into physical creation, nurturing physical creation and lifting it to higher Consciousness. Star Consciousness incarnated. Aligned and efficient creation. The **Master** fully engaged in **light work**. [The Great Work](#) near completion.

**TOSAS Narrative:** This archetype represents a fully **realized, activated, empowered, connected, and shortly victorious lightworker**, wilfully undertaking the **Great Work**. You are a star helping with the manifestation and evolution of creation. You are a spark of God Consciousness in incarnation. There is no longer any reason to fear, doubt, or deny. Embrace this truth and let your starlight shine. You are **initiated, reborn, and ready to graduate the world**.

At the highest and most aligned levels, this archetype represents the individual and collective integration of **power** and **mastery**, and the **realization** of divine identity and **purpose**. This is our **joyful** inner divinity and **powerful** star-force shining brightly through. This archetype represents a planet and a people (a **world**) that is fully aligned, properly grounded, and completely **connected**. This is a **world** that has thrown off [The Blindfold](#), seen the truth, and is ready for **graduation**.

At mundane levels, this is identity and purpose realized and fully expressed. Self has merged with self and I and “i” are one. This is parenthood and work as a vocation. This is spirituality and religion fostering strong **connection**. This is science as a global avocation. This is a life lived with **strength** and in service to The Great Work. Life is not meaningless for the one who shines bright their own star.

### Cultural References

- **Good Morning Starshine** – From the musical Hair – This song reflects the archetype’s joyful and celebratory energy, symbolizing the awakening of star consciousness and the alignment with creation. Its whimsical and uplifting tone mirrors the archetype’s narrative of being fully connected, activated, and shining brightly as a star in the cosmic dance of life. The lyrics evoke a sense of harmony and collective

joy, aligning with the archetype's vision of a world ready for graduation. Joyful stars travelling on the roads of creation <https://www.youtube.com/watch?v=t3XewsVnx9E>

- **Star on the Rise** – Matisyaho – SMatisyahu's song captures the journey of awakening and empowerment, reflecting the archetype's themes of ascending to one's full potential as a lightworker. The imagery of a "star on the rise" aligns with the archetype's focus on embracing one's divine identity and purpose. The song's spiritual undertones and emphasis on growth resonate with the narrative of shining brightly while contributing to the Great Work. [<https://www.youtube.com/watch?v=9mPZ4gwBBA8>]
- **"Shining Star"** – Earth, Wind & Fire – This classic funk anthem encourages individuals to recognize their inner brilliance and potential, aligning with the archetype's message of embracing one's star-force and divine purpose. [<https://www.youtube.com/watch?v=Zu9a29UR2dU>]
- **"Starman"** – David Bowie – Bowie's iconic track tells the story of a cosmic figure bringing hope and inspiration to humanity, mirroring the archetype's theme of star consciousness incarnated to uplift creation. Works with the **lightworker** archetype as well.

[<https://www.youtube.com/watch?v=t365MuktYQs>]

- **The Little Prince – Antoine de Saint-Exupéry** – This literary classic explores themes of love, purpose, and seeing with clarity beyond surface appearances. The Little Prince himself embodies a "star-force," offering wisdom that uplifts others while remaining connected to his celestial origins.





## Passage

**Key Phrase:** My own Spiritual Ego stands in my way.

**Symbolism:** An angel figure representing your own Spiritual Ego<sup>27</sup> stands before you on the Path, blocking your entrance into The Garden<sup>28</sup> of full **connection**. Righteous and with hair afire, symbolizing full and unmediated connection to Consciousness, your Highest Self holds the *book of your life* up for examination. A Self-evaluation is at hand.

**TOSAS Narrative:** This archetype teaches of the significance and importance of **alignment**, or rather **The Figure That Blocks Your Way**. The figure that blocks you if you are not properly aligned. The figure that is you—or rather—your **Spiritual Ego**. You cannot move forward, **activate**, or **connect** until you properly **align** with your own spiritual ego *and* commit to the healing and reconnection work you came here to do. There are no other options available. To gain passage to full and empowered connection, you must be true not only to your damaged and twisted **Bodily Ego**, but to your true capital “S” Self. Understand this: your higher self has a no-compromise policy. It (spiritual ego) won’t allow full connection until you (*bodily ego*) get it right.

<sup>27</sup>[https://spiritwiki.lightningpath.org/index.php/Spiritual\\_Ego](https://spiritwiki.lightningpath.org/index.php/Spiritual_Ego)

<sup>28</sup>[https://spiritwiki.lightningpath.org/index.php/The\\_Blindfold](https://spiritwiki.lightningpath.org/index.php/The_Blindfold)

At the highest and most aligned levels, this is your own higher Self, your own spiritual ego, guarding passage into an empowered connection with Self. At the highest levels, this archetype represents what we might call The Refusal to fully reconnect. It is your spiritual ego saying until you stop doing stupid and unaligned shit, there can be no full reconnection (no, in Christian/Islamic terms, “entrance into the kingdom.”

At mundane levels, this is **Right Thought, Right Environment, and Right Action** in the world. This is you establishing safe environments. This is you clearing out ideology and elite archetypes. This is you righting all the wrongs for which you are responsible, and later helping others do the same. Note, this is not a judgment and nobody is being punished. Should you wish to attain passage and move forward, **acknowledge** and **atone** for whatever it is you have done. Fix what you have broken , align, and come home.

### Cultural References

- In the children’s cartoon [Stephen Universe](#), Gems which had previously been violent and abusive are gradually aligned, transformed, and accepted into the wider community of gems and people, but only when they’re nice. Notably, the Crystal Gems are not attacked or injured in any

way. They are talked to.

- **A Christmas Carol – Charles Dickens – Ebenezer**  
Scrooge's transformation from greed to generosity exemplifies the "Passage" archetype. His encounters with his past, present, and future force him to evaluate his life choices and realign with his higher values. He's only happy and alive when he learns to do the right thing (which in his case is give away his wealth).
- **The Alchemist – Paulo Coelho – Santiago's quest for his**  
Personal Legend reflects themes of self-discovery, overcoming doubt, and aligning with one's purpose—a direct parallel to this archetype. [This one is a possibility I only learned of Paulo Coelho today so I'm gonna read this and make a decision later]



# Connection

**Key Phrase:** Joyfully I reconnect.

**Symbolism:** The moon symbolizes your connection to your higher [Spiritual Ego](#). The variable moon represents the waxing and waning strength of that connection, and the reality that while the world around you remains toxic, connection is always a “work in progress.” Repeated approximations are required before a more permanent connection is finally achieved. Note that a new moon is disconnection while the full moon is full connection. Electrical discharge and the bright full moon represent the electrical/lightning power of a potent and direct connection. With proper care and attention, with only a little bit of healing, a lightning flash no longer shakes the **tower** but instead brings **healing**, insight, empowerment, and enlightenment.

**TOSAS Narrative:** This archetype represents connection, which always leads, more or less, to **realization**, **emancipation**, **empowerment**, and **activation**. The archetype also represents ongoing will and intent. Connection is not something that happens just once. Because of the damage done by [Toxic Socialization](#), we must repeatedly overcome fear, resistance, misunderstanding, and

misdirection and continually practice connection before a more permanent state may be achieved.

At the highest and most aligned levels, this is acceptance and asseveration. We have cleared the elite's archetypes and established emancipatory right thought. We understand that it is not an issue of judgment and/or damnation. We know there is nothing to fear. It is a simple question of choice and the supports we are able to acquire. Choosing to move forward, we work to create [right environment](#). Working with archetypes, we slowly establish [right thought](#). More and more we engage in [right action](#). Remember, this is not a test. There is no judgment. No one is "left behind." Embracing the inclusive truth, we **connect** and are **reborn**. Embracing our power, we **activate**, and **graduate** the entire planet.

At a mundane level, this is a sudden insight and expanded awareness that brings instant understanding. Note the insight will only permanent if we continue to move forward. Stagnation inevitably leads to re-establishment of ideological controls.

### Cultural References

- **Cosmic Empire** – George Harrison – Cosmic Empire explore themes of spiritual longing and the pursuit of unity with higher consciousness. The song portrays the Cosmic

Empire as a metaphorical space of full connection, where fear and resistance dissolve, and joy and bliss prevail—mirroring the archetype’s ideal of overcoming the barriers imposed by toxic socialization to achieve alignment with one’s Spiritual Ego. The lyrics, “To where all souls are filled with joy” and “Spirit no one can destroy,” reflect the archetype’s vision of connection as a source of empowerment, healing, and enlightenment. The repeated references to “waiting in the queue” and “wanting a front row pew” underscore the ongoing process of striving for connection, much like the archetype’s emphasis on repeated approximations toward alignment.

[[https://www.youtube.com/watch?v=ty\\_1U08\\_jig](https://www.youtube.com/watch?v=ty_1U08_jig)]. This video is rich with the symbolism of connection.

**Lateralus** –Tool – A simple song about connection. “I embrace my desire to ... feel connected ... to swing on the spiral of our divinity and still be a human.”

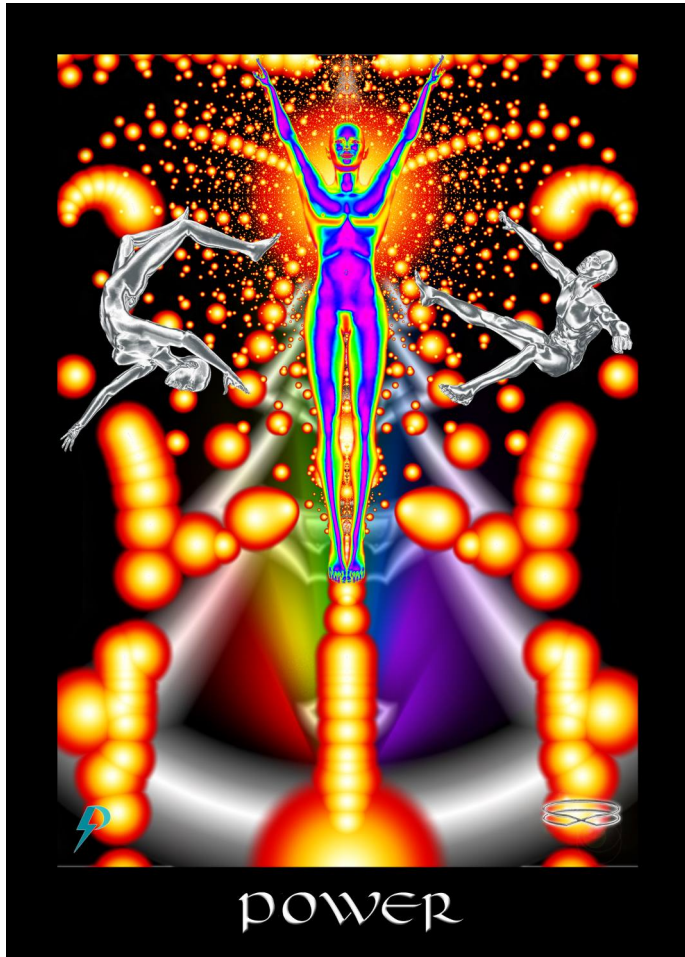
- **That Which I Lost** – George Harrison – That Which I Have Lost explores spiritual awakening and the things that block it (metaphorically, “darkness”. The lyrics describe a journey of overcoming “forces of darkness, limitation, falsehood, and mortality” that bar access to the "higher

world," echoing the archetype's narrative of repeatedly confronting resistance, fear, and misunderstanding to achieve alignment and insight. The plea for illumination—"I need someone to show me, illumine my consciousness"—reflects the archetype's emphasis on seeking clarity and healing as steps toward reconnection. The song also highlights the transformative power of connection, as seen in the moment of "a flash inward illumination" that renews life and removes the metaphorical scales from the protagonist's eyes. This mirrors the archetype's symbolism of electrical discharge and light as representations of potent insight that empower and enlighten. Additionally, the critique in "Your mirrors of understanding they need cleansing" reinforces the archetype's idea that connection is a work in progress, requiring effort to overcome desires and distractions that cloud perception.

- **Live High** – Jason Mraz – Live high describes the process of connection as it gives us access to what is beneath the surface—i.e., a whole universe. The lyrics "live high, live mighty, live righteously" point to the importance of alignment. Lyrics about politics and primates point to

obstacles to connection, including our toxic political systems. [[https://www.youtube.com/watch?v=ty\\_1U08\\_jjg](https://www.youtube.com/watch?v=ty_1U08_jjg)]

- Art by Alex Gray – Alex Gray draws connection. Look him up. Search “Alex Gray Art.”
- **Unconsciousness Rules** – George Harrison – Song about disconnection



# Power

**Key Phrase:** Your power and glory

**Symbolism:** A figure stands tall and confident, radiating power and **strength**. The figure is surrounded by a glowing aura of light, symbolizing **alignment**, and **connection**. This is not the power of domination or control but the power of confidence and purposeful action. The multicoloured power of creation shines brightly through. **Force** and **formation** in balance. Unencumbered by archetypes of limitation and oppression, properly **aligned** and **activated**, empathic and connected. Copious energies flow freely. Fully connected, the figure embraces highest purpose, which is self-conscious commitment to [The Great Work](#).<sup>29</sup> Consciousness explodes into the world. Knocked off balance by the power, the disconnected grasp, stumble, and fall.

**TOSAS Narrative:** This archetype represents true power—not the destructive, exploitative power of domination but the constructive, empowering **force** that emerges when a body is **aligned**, **activated**, and **connected**.

At its highest levels, this archetype represents wide open connection and the ability to act decisively in alignment with one's highest  
<sup>29</sup>[https://spiritwiki.lightningpath.org/index.php/The\\_Great\\_Work](https://spiritwiki.lightningpath.org/index.php/The_Great_Work)

purpose. It is the strength to overcome fear, doubt, and external obstacles while remaining grounded in awareness and love. It is the full creative potential of Consciousness acting through a fully **activated** and **aligned** [Physical Unit](#). This is the individual **lightworker** in full manifestation. This is the **realized, emancipated, master** in power and in full control. This is the unity of self with Self. This is **victory** in the world. This is full expression of Consciousness. *This is* collective divinity. This is the glorious [Triumph of Spirit](#).

At mundane levels, this is power over your world. Confident in your identity and abilities, confident in your understanding of life, you use your skills to create a better world.

### Cultural References

- [Warrior People](#) – Nahko and Medicine for the People – The song "**Warrior People**" by **Nahko and Medicine for the People** embodies the TOSAS "Power" archetype by emphasizing collective empowerment, self-mastery, and purposeful action. It highlights the idea that power is accessible to everyone, not concentrated in the hands of a few. The song encourages listeners to embrace their inner warrior by overcoming bodily ego-driven limitations and

aligning with their authentic spiritual ego.

<https://www.youtube.com/watch?v=Wa9XNjUI95A>

- [Medicine](#) – Rising Appalachia – The song "**Medicine**" by **Rising Appalachia** celebrates collective empowerment, self-mastery, and purposeful action rooted in aligned connection to nature, community, and ancestral wisdom. It emphasizes that healing power is accessible to everyone. By invoking imagery of forests, gardens, and ancestral traditions, the song highlights spiritual alignment as a source of strength and calls for using power constructively to heal both people and the planet.

<https://www.youtube.com/watch?v=czkHmjrfCnM>

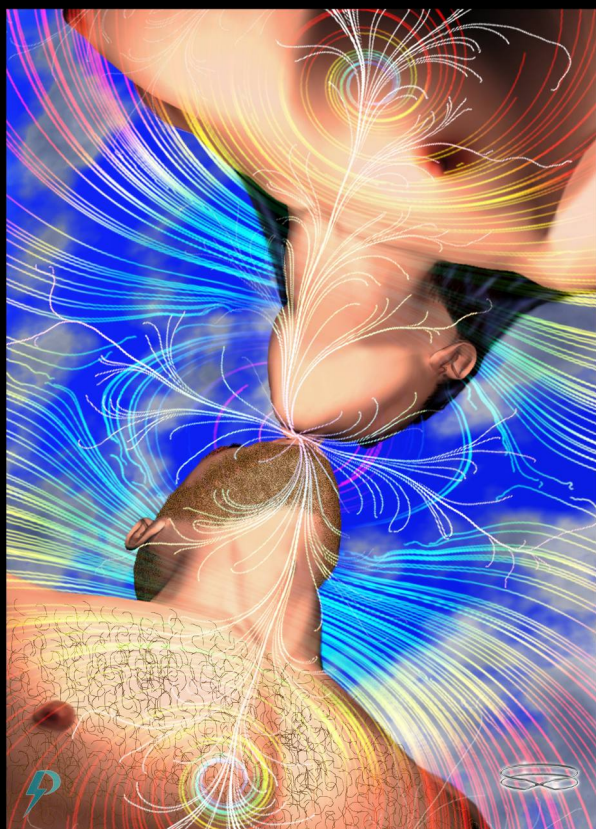
- [They do not Really Care About Us](#) – Michael Jackson – "They Don't Care About Us" embodies the TOSAS Power archetype by acknowledging systemic injustice while **calling** for collective empowerment and change. The song confronts abuses of power, such as police brutality and institutional prejudice, while channeling righteous anger into a demand for justice and change. Its defiant tone and universal message align with the archetype's vision of power as a constructive force rooted in **alignment**,

**activation, and connection.**

[[https://www.youtube.com/watch?v=QNJL6nfu\\_Q](https://www.youtube.com/watch?v=QNJL6nfu_Q)]

- **Get up, Stand up – Bob Marley** – "*Get Up, Stand Up*" is a rallying cry for people to unite and stand up for their rights: his call to action underscores the interconnectedness of humanity. Marley's lyrics reject passivity and encourage people to actively challenge oppression and injustice, embodying the message that transformation requires everyone's participation. Marley's lyrics empower marginalized voices, urging them to recognize their inherent value and take a stand.
- **Film: *Selma* (2014)** – The story of Martin Luther King Jr.'s march from Selma to Montgomery reflects themes of collective empowerment, courage, and resistance against systemic oppression.
- **Fight The Power – Snap** – Personal power and the inability to make change "We've got the power, we've got the strength to win," [[https://www.youtube.com/watch?v=nm6DO\\_7px1](https://www.youtube.com/watch?v=nm6DO_7px1)]

- Superhero movies are a corruption of this archetype. Power always in the hands of a few. The TOS archetype is power in the hands of everybody.



ACTIVATION

# Activation

**Key Phrase:** It is time to activate the **master**.

**Symbolism:** **Force** and **Formation**, here symbolized by male and female, as is traditional on this planet, applied in appropriate balance leads to full activation of the physical unit. Chakras and kundalini light up. Remaining blockages and obstacles to healing and connection, symbolized by clouds in the sky, disperse as the energy crackles. Intentions coalesce. As you activate, as the **world** activates, reality begins to gently (and sometimes not so gently) align with Consciousness and transform. [Perfection](#) and final **graduation** are only a step or two away.

**TOSAS Narrative:** This archetype teaches of individual and collective activation. After preparations are complete, after the [Physical Unit](#) is prepared and **aligned**, after **force** and **formation** are in proper balance, after you **emancipate** yourself from mental slavery, this is *your* individual and *our* collective **activation**.

At the highest and most aligned levels, this is the transformative “pop” that arises from collective activation. Blockages have disintegrated, resistances have evaporated, barriers have collapsed, bindings fall away, the masses rise up and transform. The **activation**

and **empowerment** of billions terrifies some, but this is not random chaos, it is divine unfolding. The ultimate destination is rejection of judgment and a positive and inclusive transformation of the **world** so really there is nothing to fear.

At mundane levels, this is individual empowerment and advancement on the Path. Having established [right thought](#) and created [right environment](#), having learned to live in a state of aligned [right action](#), you embrace with confidence your [Spiritual Ego](#). Now that you consistently engage in Right Action, you reclaim original power. **Connected, activated** and fully aware, you move forward and create the world that you came here to create.

### **Cultural References**

- **Serpentine Fire** – Earth Wind and Fire – Serpentine Fire uses imagery associated with the rising of energy, often linked to Kundalini, with the title itself referencing the serpentine symbolism commonly associated with this spiritual awakening. The song celebrates transformation and empowerment, with its energetic rhythms and lyrics evoking the rising power of life force energy—much like the process of Kundalini rising. The lyrics and upbeat tempo create an atmosphere that mirrors the awakening of dormant

energy within the body and it.

[<https://www.youtube.com/watch?v=XoI1XPqXQ90>]

- **Michelangelo's *Creation of Adam*** – The moment of

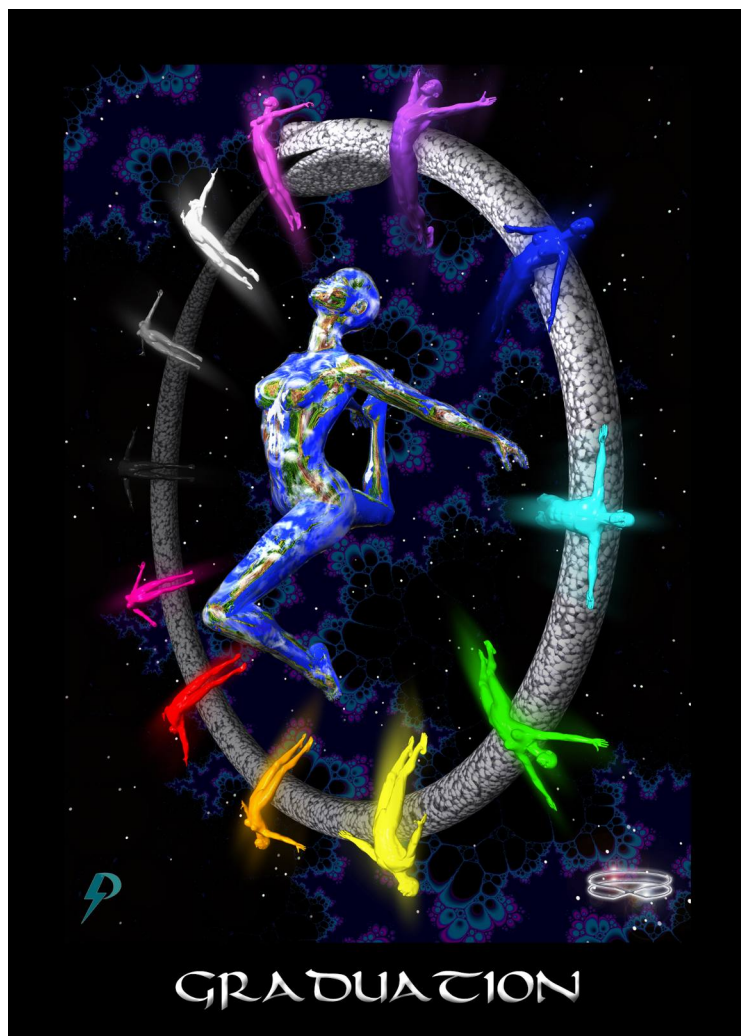
listeners to awaken to their true nature and purpose. This aligns with the **calling** and **connection** archetypes. Similarly, *Pneuma* calls for individuals to recognize and activate their inner divinity. The song's themes echo descriptions of Kundalini activation, where energy rises through the spine to awaken higher states of consciousness. In yogic traditions, this process is linked to *prana*, or life force energy. The lyrics in *Pneuma* evoke this process: "*Child, wake up / Remember we are born of one breath, one word.*" [<https://www.youtube.com/watch?v=6dlxDXdhIj0>]

- **Sphere** – The 1998 movie *Sphere*<sup>30</sup> depicts activation, but in an extremely negative light, suggesting that humans cannot activate because they are too dumb to handle the power.

---

<sup>30</sup>[https://www.imdb.com/title/tt0120184/?ref\\_=fn\\_al\\_tt\\_1](https://www.imdb.com/title/tt0120184/?ref_=fn_al_tt_1)





# Graduation

**Key Phrase:** Our Joyful Graduation Dance

**Symbolism:** Twelve rainbow figures circle Gaia. The twelve figures represent the sum total of human life and planetary variation. These are the twelve signs of the zodiac, the [Rainbow Spectrum](#) of humanity—sexual and creative expression in all its wondrous variety. The snake ouroboros represents a new creation template that supports joyful co-creation, and not selfish exploitation. Gestation complete. Chrysalis transformation accomplished. [The Body](#) and body evolved and fully connected. Bondage broken. Mind **emancipated**. Humanity united. A cosmic graduation dance with all life begins. Vulnerable and exposed, but safe all the same, a world contact jubilation welcomes us home.

**TOSAS Narrative:** This archetype represents [The Great Work](#) complete. This is graduation and the associated celebration. Having responded to the **call** and reclaimed **joyful mastery**, having **initiated, emancipated and aligned**, we **activate** and are **reborn**. **Realizing** our birthright and purpose, we take our **power, reconnect** and **victoriously** shine our bright **star**. Consequently, darkness is swept away and the world rapidly transforms. Now we see clearly

our **sacrifice** was worth it. Now we fulfill the **promise** and invite everyone to join in the ceremonials.

At the highest and most aligned levels, we celebrate the culmination of human evolution and the fulfillment of the **Divine Plan**. United as one across the globe, we **joyfully** embrace a cosmic unity. A celebratory milestone welcomes us home, but this is not the end of our journey. This is merely the beginning of utopia on this **world**. The ascent of the universe is an eternal voyage. Through the eternal hallways of creation, we build a galactic star nation.

At mundane levels, this is graduation and commencement. You have worked hard and **sacrificed** much. You have **victoriously** achieved the goal you have set for yourself, so celebrations are in order. Do not rest too long, however, for much healing and transformation work remains.

## Cultural References

- [Age of Aquarius](#) – Fifth Dimension – *Age of Aquarius* embodies the themes of collective transformation, unity, and the dawn of a harmonious and enlightened era. The song heralds the arrival of the Age of Aquarius, a shift from division and conflict to connection, understanding, and cosmic alignment. Its celebration of planetary evolution and

the awakening of higher consciousness aligns with the archetype's vision of humanity's joyful co-creation and universal harmony.

[https://www.youtube.com/watch?v=BTZArvbmG\\_o](https://www.youtube.com/watch?v=BTZArvbmG_o)

- [Black as Night](#) – Nahko and Medicine for the People – *Black as Night* aligns closely with the **Graduation Archetype** through its themes of transformation, self-awareness, and collective awakening. The song reflects an individual and shared journey of embracing light amidst darkness, symbolizing the celebratory culmination of personal and collective growth. Lines like "Black as night with a little bit of moonlight shining from my center within" suggest the integration of shadows and light, echoing the archetype's message of healing, reconnection, and the joyful acknowledgement of humanity's diverse beauty. The recurring belief in "good things coming" and the imagery of renewal through nature and community further tie the song to the Graduation Archetype's focus on unity, harmony, and the co-creative dance of life. With its call to witness, embrace, and celebrate the unfolding journey, <https://www.youtube.com/watch?v=lkGBLLjAXEA>

- [Calling Occupants](#) – Klaatu – *Calling Occupants of Interplanetary Craft* by the Canadian band Klaatu reflects the Graduation Archetype by envisioning a moment of unity and global transformation through interstellar connection. The song’s central message—an invitation to establish contact with advanced, benevolent beings—aligns with the archetype’s themes of cosmic unity, harmony, and the celebration of humanity’s evolution beyond division and conflict.  
[[https://www.youtube.com/watch?v=SbI2z\\_aFXwY](https://www.youtube.com/watch?v=SbI2z_aFXwY)]
- **Magentalane** – Klaatu – aligns beautifully with the **Graduation Archetype**, capturing the joy and fulfillment of returning to a place of unity, harmony, and completion. The song describes the triumph of overcoming challenges and arriving in “fair Magentalane,” a metaphorical utopia where struggles are left behind, and celebration and connection take their place. This mirrors the archetype’s imagery of a joyful cosmic dance marking humanity’s collective evolution. The lyrics, such as “it feels so good to be back at home,” reflect the archetype’s theme of reconnecting with a higher state of existence, where the Great Work is fulfilled and the promise of transformation is realized. With its tone of celebration, reflection, and

renewal, *Magentalane* resonates as an anthem of collective triumph and the beginning of a new chapter in the journey of human and cosmic

evolution. <https://www.youtube.com/watch?v=gjmioxJMS1M&list=PLTrlcWTTkXMna0XUJIJHwTrMIRazpznS&index=7>

- **Starfleet (*Star Trek*)** – Starfleet represents an interplanetary alliance dedicated to exploration, peace, and collaboration among species—a futuristic realization of planetary graduation.
- **Shambhala Warriors** – Represents the culmination of a prohesied journey, and the emergence of a new harmonious era. The poem reflects the archetype’s themes of collective awakening, the triumph of light over darkness, and the celebration of a reborn world.

[[https://www.academia.edu/45006118/Shambhala\\_Warriors](https://www.academia.edu/45006118/Shambhala_Warriors)

]

## The Complete TOSAS Narrative

You are a **joyful** and **powerful master** of creation. You are a **lightworker**, incarnated on this **world** to complete the [Great Work](#) so we can **graduate** and join with those planets that have come before. You are a **star**, but descending into the darkness of disconnection, you have **sacrificed** much. Long have you waited for this **call**. Now, as you prepare for **passage**, remember the **promise**. No matter who you may be, no matter what you have done, we all deserve a **rebirth**. Within nurturing environments, **initiate** and clear the archetypal muck. **Emancipate** your mind. **Activate** your body. Gather your **strength**. **Realize** the truths of this **world**. To move forward, remember this key: **alignment** and a balance of **force** and **formation**, filtered through and governed by life-affirming archetypes contained within an **emancipatory** creation template brings **reconnection** and transformation not only to your self, but the entire planet as well. Step forward through **The Passage**. The **Triumph of Spirit** is nigh. **Victory** now comes to this world.

## References

- Akbar, A. (2020). The Zoroastrian Provenance of Some Islamic Eschatological Doctrines. *Studies in Religion/Sciences Religieuses*, 49(1), 86–108.  
<https://doi.org/10.1177/0008429819844499>
- Annerbäck, E.–M., Sahlqvist, L., Svedin, C. G., Wingren, G., & Gustafsson, P. A. (2012). Child physical abuse and concurrence of other types of child abuse in Sweden—Associations with health and risk behaviors. *Child Abuse & Neglect*, 36, 585–595. edselp.
- Arendt, H. (1969). *On Violence*. Harcourt Brace Jovanovich.
- Bala, M. (2010). The Clown. *Jung Journal: Culture & Psyche*, 4(1), 50–71.
- Biddy Tarot. (2017). *Fool Tarot Card Meanings*.  
<https://www.biddytarot.com/tarot-card-meanings/major-arcana/fool/>

- Blaut, J. M. (1993). *The colonizer's model of the world: Geographical diffusionism and eurocentric history*. Guilford Press.
- Blavatsky, H. P. (1889). *The Key to Theosophy: A Clear Exposition Based on the Wisdom Religion of All Ages*. Theosophical University Press.
- Boyce, M. (1996). *A History of Zoroastrianism: Volume One The Early Period*. E. J. Brill.
- Boyce, M. (2001). *Zoroastrians: Their Religious Beliefs and Practices*. Routledge.
- Brown, P. (1971). *The World of Late Antiquity*. Thames and Hudson.
- Burke, K. (1941a). *The Philosophy of Literary Form*. Louisiana State University Press.
- Burke, K. (1941b). The Rhetoric of Hitler's "Battle." In *The Philosophy of Literary Form: Studies in Symbolic Action* (pp. 191–220). Louisiana State University

Press.

Campbell, J. (2004). *The Hero with a Thousand Faces*.  
Princeton University Press.

Case, P. F. (1920). *An Introduction to the Study of the Tarot*.  
Kindle Edition.

Cicero, C., & Cicero, S. T. (2004). *The Essential Golden  
Dawn*. Llewellyn.

Cillizza, C. (2019). *Yes, Donald Trump really believes he is  
“the chosen one.”* CNN.  
<https://www.cnn.com/2019/08/21/politics/donald-trump-chosen-one/index.html>

Decker, R., Depaulis, T., & Dummett, M. (1996). *A Wicked  
Pack of Cards: The Origins of the Occult Tarot*. St  
Martin's Press.

Decker, R., & Dummett, M. (2002). *A history of the occult  
tarot, 1870–1970*. Duckworth. <https://amzn.to/2I2EIAb>

Dummett, M. (1980). *The game of tarot*. Duckwork.

<https://amzn.to/2Tnv7u6>

Ehrman, B. D. (2007). *Misquoting Jesus: The Story Behind Who Changed the Bible and Why*. Harper One.

Evil Empire speech. (2020). In *Wikipedia*. Wikipedia.

[https://en.wikipedia.org/w/index.php?](https://en.wikipedia.org/w/index.php?title=Evil_Empire_speech&oldid=959090578)

[title=Evil\\_Empire\\_speech&oldid=959090578](https://en.wikipedia.org/w/index.php?title=Evil_Empire_speech&oldid=959090578)

Fanon, F. (1963). *The Wretched of the Earth*. Grove Press.

Freire, P. (2005). *Pedagogy of the Oppressed*. Continuum.

Griffen, D. R. (1988). Introduction: The Reenchantment of Science. In D. R. Griffen (Ed.), *The Reenchantment of Science* (pp. 1–46). SUNY Press.

Halverson, J. R., Goodall, H. L., & Corman, S. R. (2011). *Master Narratives of Islamist Extremism*. Palgrave Macmillan.

Hanegraaff, W. J. (2012). *Esotericism and the Academy: Rejected Knowledge in Western Culture*. Cambridge University Press.

- Hanegraaff, W. J. (2013). *Western Esotericism: A Guide for the Perplexed*. Bloomsbury Academic.
- Jorgensen, D. L., & Jorgensen, L. (1982). Social Meanings of the Occult. *The Sociological Quarterly*, 23(3), 373–389.
- Jung, C. G. (1964). *Man and his Symbols*. Anchor Press Double Day. <https://amzn.to/2l2V1x2>
- Jung, C. G. (1980). *The Archetypes and the Collective Unconscious* (G. Adler, S. H. Read, M. Fordham, & W. McGuire, Eds.; R. F. C. Hull, Trans.; 2nd ed.). Princeton University Press.
- Kralovec, E. (2001). *The End of Homework: How Homework Disrupts Families, Overburdens Children, and Limits Learning*. Beacon Press.
- Levinson, B. (1998, February 13). *Sphere* [Action, Mystery, Sci-Fi, Thriller]. Warner Bros., Baltimore Pictures, Constant c Productions.

- Lomas, R. (2010). *The Secret Science of Masonic Initiation*. Weiser.
- MacIntyre, A. (2007). *After Virtue: A Study in Moral Theory* (Third Edition). University of Notre Dame Press.
- Maslow, A. H. (1961). Eupsychia—The Good Society. *Journal of Humanistic Psychology*, 1(2), 1.
- Mathers, S. L. M. (1888). *The Tarot: Its Occult Significance, Use in Fortune-Telling, and Method of Play, Etc.* Kindle Edition.
- Murray, D. (2020, July 22). *China is “evil empire harvesting Brits” data through TikTok’, says Mike Pompeo*. The Sun. <https://www.thesun.co.uk/news/12198297/china-harvest-brit-data-tiktok/>
- Noddings, N., & Shore, P. (1984). *Awakening the Inner Eye: Intuition in Education*. Teachers College, Columbia University.
- O’Hagan, K. P. (1995). Emotional and Psychological Abuse:

Problems of Definition. *Child Abuse & Neglect*, 19(4), 449–461.

Ouspensky, P. D. (1913). *The symbolism of the tarot: Philosophy of occultism in pictures and numbers*. Mineola. Trood Print and Pub.

Parker, A. C. (1912). Certain Iroquois Tree Myths and Symbols. *American Anthropologist*, 14(4), 608–620. JSTOR.

Pike, A. (1871). *Morals and Dogma*. Global Grey Books.

Regardie, I. (2004). *The Middle Pillar: The Balance Between Mind and Magic*. Llewellyn.

Rodriguez, R. (2011, August 18). *Spy Kids 4: All the Time in the World* [Action, Adventure, Comedy, Family, Sci-Fi]. Dimension Films, Troublemaker Studios, Spy Kids 4 SPV.

Sosteric, M. (2014). A Sociology of Tarot. *Canadian Journal of Sociology*, 39(3).

<https://www.academia.edu/25055505/>

Sosteric, M. (2018a). Everybody has a connection experience: Prevalence, confusions, interference, and redefinition. *Spirituality Studies*, 4(2). <https://www.spirituality-studies.org/dp-volume4-issue2-fall2018/files/assets/common/downloads/files/4-2-sosteric.pdf>

Sosteric, M. (2018b). Mystical experience and global revolution. *Athens Journal of Social Sciences*, 5(3), 235–255. <https://doi.org/10.30958/ajss.5-3-1>

Sosteric, M. (2018c). Star Wars is a religion that primes us for war and violence. *The Conversation*. <https://theconversation.com/star-wars-is-a-religion-that-primes-us-for-war-and-violence-89443>

Sosteric, M. (2020a). *A Short Sociology of Archetypes*. <https://www.academia.edu/44254363/>

Sosteric, M. (2020b). *Lightning Path Workbook Four – Archetypal Study and Flow Control using the Triumph*

*of Spirit Archetype System* (Vol. 4). Lightning Path Press.

Sosteric, M. (2020c). Rethinking the Origins and Purpose of Religion: Jesus, Constantine, and the Containment of Global Revolution. *Athens Journal of Social Sciences*, 9(1), 69–88.

[https://www.academia.edu/34970150/Rethinking\\_the\\_Origins\\_and\\_Purpose\\_of\\_Religion\\_Jesus\\_Constantine\\_and\\_the\\_Containment\\_of\\_Global\\_Revolution](https://www.academia.edu/34970150/Rethinking_the_Origins_and_Purpose_of_Religion_Jesus_Constantine_and_the_Containment_of_Global_Revolution)

Sosteric, M. (2021). *Connection 100 – An Auto-ethnography of my (Mystical) Connection Experiences*.

<https://www.academia.edu/50970462/>

Sosteric, M. (Under Review). *From Zoroaster to Star Wars, Jesus to Marx: The Art, Science, and Technology of Mass Human Manipulation*.

<https://www.academia.edu/34504691>

Sosteric, M., & Ratkovic, G. (2016). *Toxic Socialization*.

[https://www.academia.edu/25275338/Toxic\\_Socializati](https://www.academia.edu/25275338/Toxic_Socializati)

on

- Spiegelman, M. J. (1998). The Scientific and Mythological Basis of Divination. *Psychological Perspectives: A Quarterly Journal of Jungian Thought*, 37(1), 92–107.
- The Sun. (2019, August 22). *Donald Trump: 'I am the chosen one'*. <https://www.youtube.com/watch?v=JgwalqjF5nw>
- Wagner, S. R. (2001). *Sisters in Spirit: Haudenosaunee (Iroquois) Influence on Early American Feminists*. Native Voices.
- Weber, M. (1904). *The Protestant Ethic and the Spirit of Capitalism*. Roxbury Press.
- Wen, B. (2015). *Holistic Tarot: An Integrative Approach to Using Tarot for Personal Growth*. North Atlantic Books.

